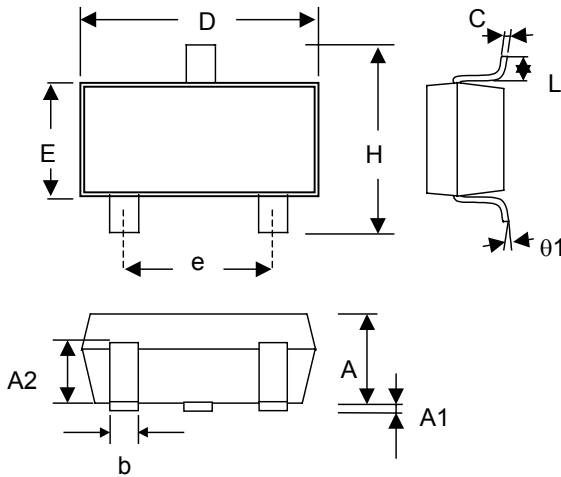


PACKAGE DIMENSIONS

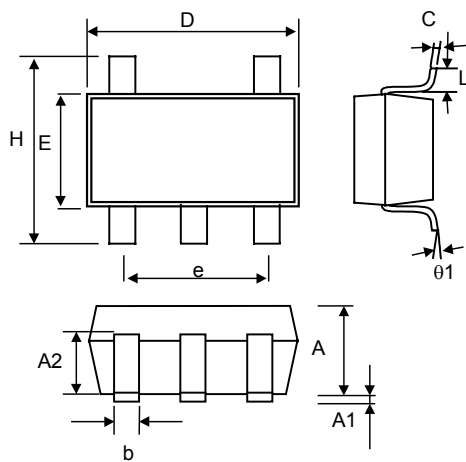
(unit: mm)

● SOT-23 (CU)



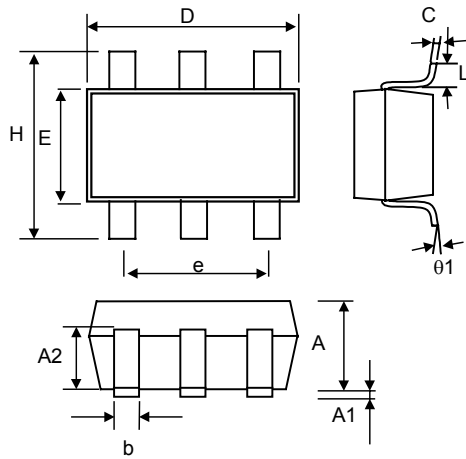
SYMBOL	MIN	MAX
A	1.00	1.30
A1	—	0.10
A2	0.70	0.90
b	0.35	0.50
C	0.10	0.25
D	2.70	3.10
E	1.40	1.80
e	1.90 (TYP)	
H	2.60	3.00
L	0.37	—
θ1	1°	9°

● SOT-23-5 (CV)



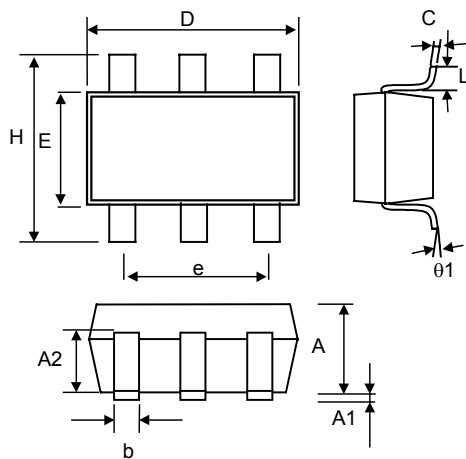
SYMBOL	MIN	MAX
A	1.00	1.30
A1	—	0.10
A2	0.70	0.90
b	0.35	0.50
C	0.10	0.25
D	2.70	3.10
E	1.40	1.80
e	1.90 (TYP)	
H	2.60	3.00
L	0.37	—
θ1	1°	9°

● SOT-23-6 (CG)



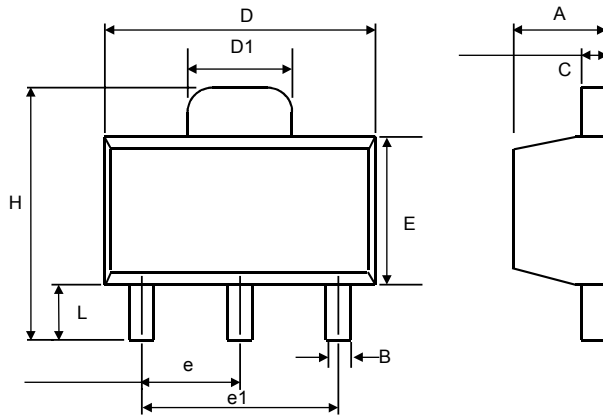
SYMBOL	MIN	MAX
A	1.00	1.30
A1	—	0.10
A2	0.70	0.90
b	0.35	0.50
C	0.10	0.25
D	2.70	3.10
E	1.40	1.80
e	1.90 (TYP)	
H	2.60	3.00
L	0.37	—
θ_1	1°	9°

● SOT-23-6W (CQ)



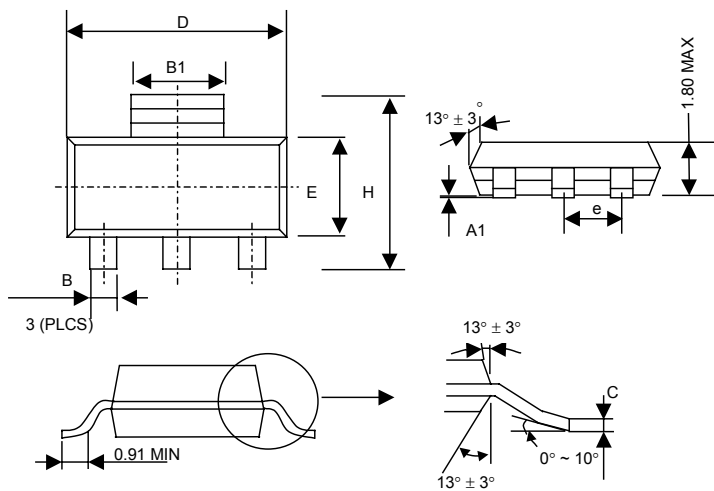
SYMBOL	MIN	MAX
A	1.00	1.30
A1	—	0.10
A2	1.00	1.40
b	0.35	0.50
C	0.10	0.25
D	2.70	3.10
E	1.60	2.00
e	1.90 (TYP)	
H	2.60	3.00
L	0.37	—
θ_1	1°	9°

● SOT-89 (CX)



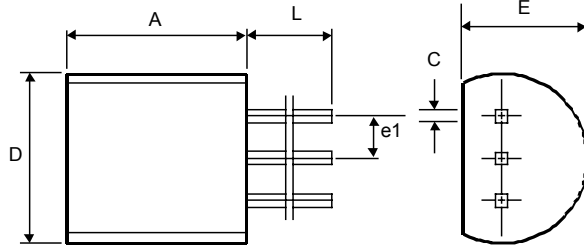
SYMBOL	MIN	MAX
A	1.40	1.60
B	0.36	0.48
C	0.35	0.44
D	4.40	4.60
D1	1.35	1.83
E	2.29	2.60
e	1.50 (TYP.)	
e1	3.00 (TYP.)	
H	3.94	4.25
L	0.89	1.20

● SOT-223 (CY)



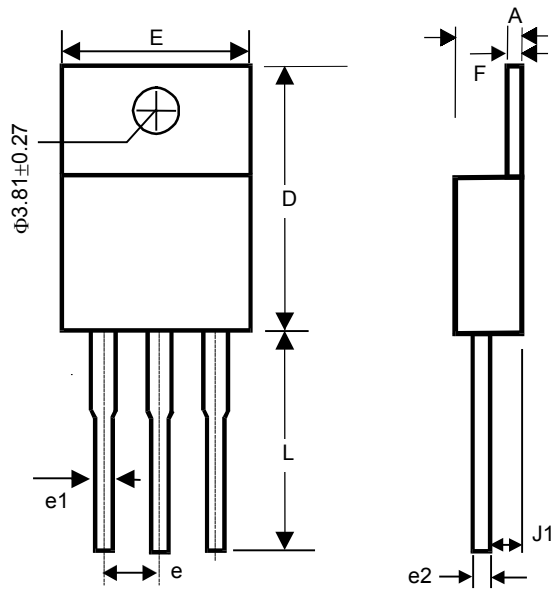
SYMBOL	MIN	MAX
A1	0.02	0.12
B	0.60	0.80
B1	2.90	3.15
C	0.24	0.35
D	6.30	6.80
E	3.30	3.70
e	2.30 (TYP.)	
H	6.70	7.30

● TO-92 (CZ)



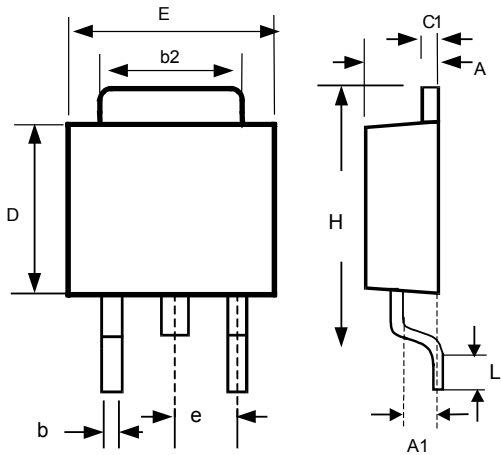
SYMBOL	MIN	MAX
A	4.32	5.33
C	0.38 (TYP.)	
D	4.40	5.20
E	3.17	4.20
e1	1.27 (TYP.)	
L	12.7	-

● TO-220 (CT)



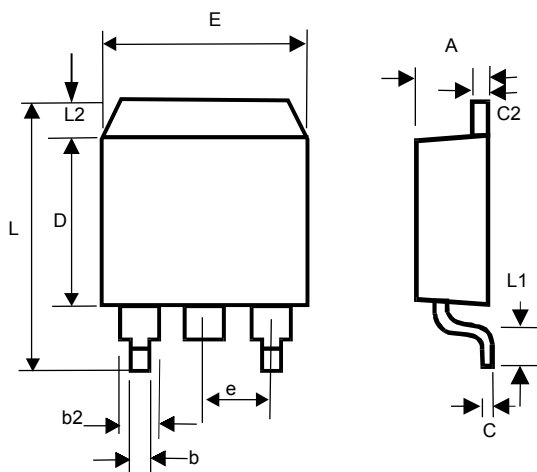
SYMBOL	MIN	MAX
A	3.56	4.82
D	14.23	16.51
E	9.66	10.66
e	2.29	2.79
e1	0.50	1.15
e2	-	1.10
F	0.51	1.39
J1	2.04	2.92
L	12.70	14.73

● TO-252 (CE)



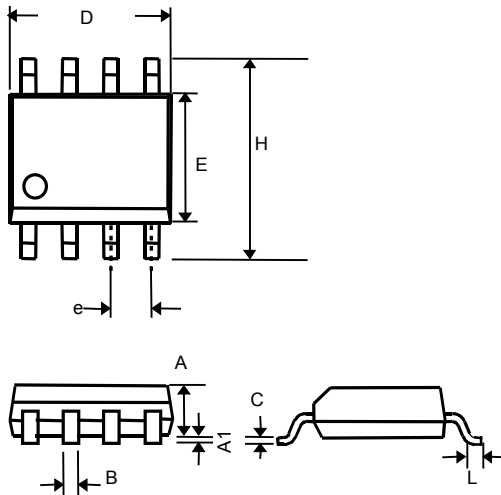
SYMBOL	MIN	MAX
A	2.19	2.38
A1	1.02	1.27
b	0.64	0.88
b2	5.21	5.46
C1	0.46	0.58
D	5.33	5.59
E	6.35	6.73
e	2.28 (TYP.)	
H	9.40	10.42
L	0.51	-

● TO-263 (CM)



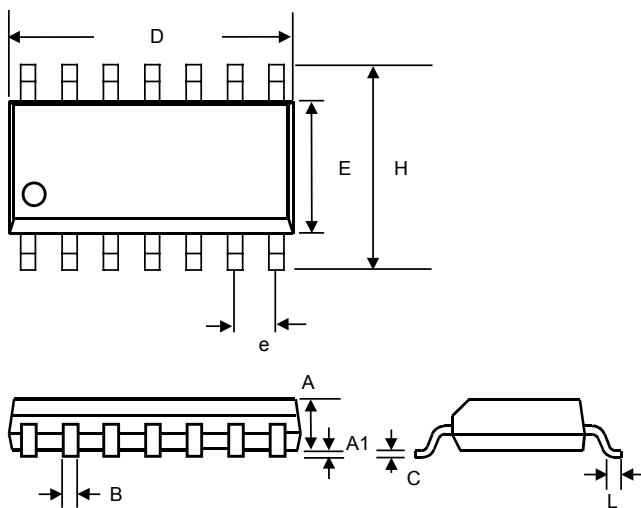
SYMBOL	MIN	MAX
A	4.06	4.83
b	0.50	1.00
b2	1.14	1.40
C	-	0.7
c2	1.14	1.40
D	8.63	9.66
E	9.65	10.29
e	2.54 (TYP.)	
L	14.60	15.88
L1	2.28	2.80
L2	-	1.40

● 8 LEAD PLASTIC SO (CS)



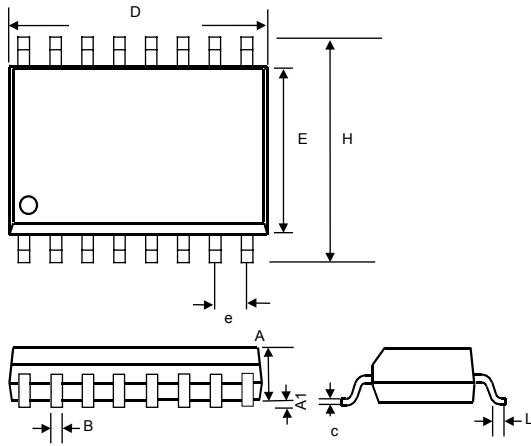
SYMBOL	MIN	MAX
A	1.35	1.75
A1	0.10	0.25
B	0.33	0.51
C	0.19	0.25
D	4.80	5.00
E	3.80	4.00
e	1.27(TYP)	
H	5.80	6.20
L	0.40	1.27

● 14 LEAD PLASTIC SO (CS)



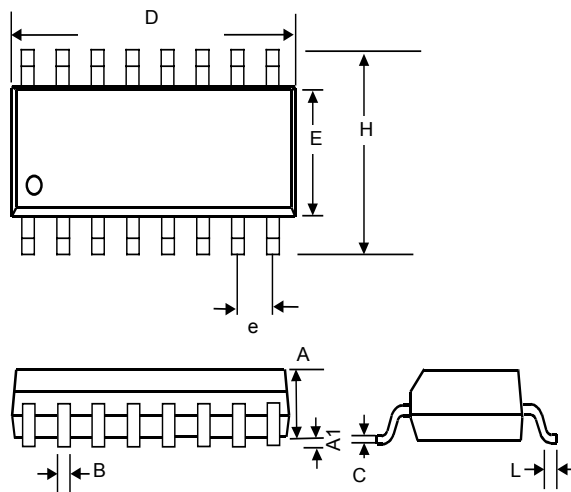
SYMBOL	MIN	MAX
A	1.35	1.75
A1	0.10	0.25
B	0.33	0.51
C	0.19	0.25
D	8.55	8.75
E	3.80	4.00
e	1.27(TYP)	
H	5.80	6.20
L	0.40	1.27

● 16 LEAD PLASTIC SO (300 mil) (CS)



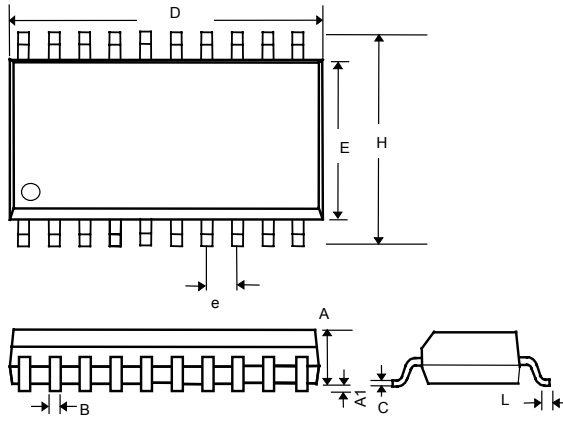
SYMBOL	MIN	MAX
A	2.35	2.65
A1	0.10	0.30
B	0.33	0.51
C	0.23	0.32
D	10.10	10.50
E	7.40	7.60
e	1.27(TYP)	
H	10.00	10.65
L	0.40	1.27

● 16 LEAD PLASTIC SO (150 mil) (CS)



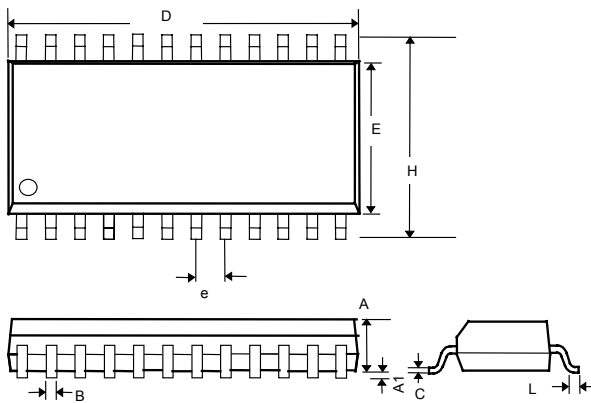
SYMBOL	MIN	MAX
A	1.35	1.75
A1	0.10	0.25
B	0.33	0.51
C	0.19	0.25
D	9.80	10.00
E	3.80	4.00
e	1.27 (TYP)	
H	5.80	6.20
L	0.40	1.27

● 20 LEAD PLASTIC SO (300 mil) (CS)



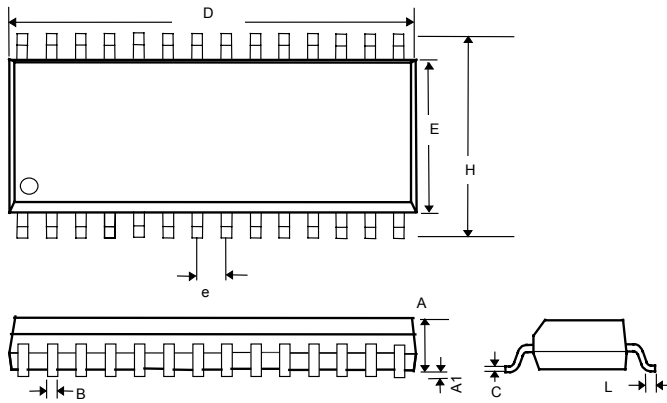
SYMBOL	MIN	MAX
A	2.35	2.65
A1	0.10	0.30
B	0.33	0.51
C	0.23	0.32
D	12.60	13.00
E	7.40	7.60
e	1.27(TYP)	
H	10.00	10.65
L	0.40	1.27

● 24 LEAD PLASTIC SO (300 mil) (CS)



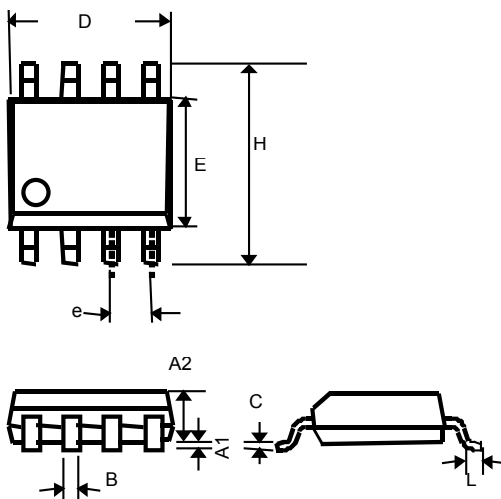
SYMBOL	MIN	MAX
A	2.35	2.65
A1	0.10	0.30
B	0.33	0.51
C	0.23	0.32
D	15.20	15.60
E	7.40	7.60
e	1.27(TYP)	
H	10.00	10.65
L	0.40	1.27

● 28 LEAD PLASTIC SO (CS)



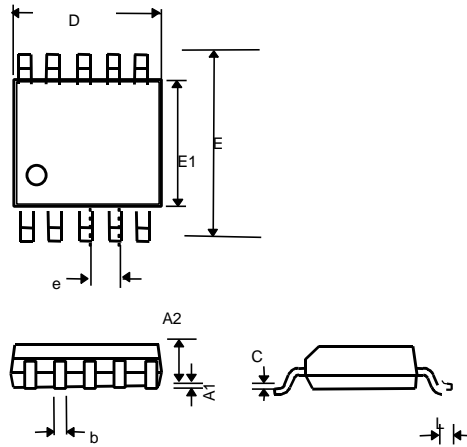
SYMBOL	MIN	MAX
A	2.35	2.65
A1	0.10	0.30
B	0.33	0.51
C	0.23	0.32
D	17.70	18.10
E	7.40	7.60
e	1.27 (TYP)	
H	10.00	10.65
L	0.40	1.27

● MSOP 8 (CO)



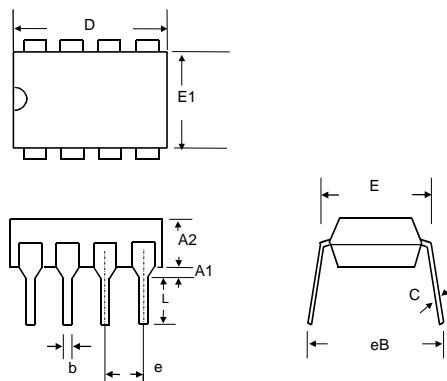
SYMBOL	MIN	MAX
A1	--	0.20
A2	0.76	0.97
B	0.28	0.38
C	0.13	0.23
D	2.90	3.10
E	2.90	3.10
e	0.65	
H	4.80	5.00
L	0.40	0.66

● MSOP 10 (CO)



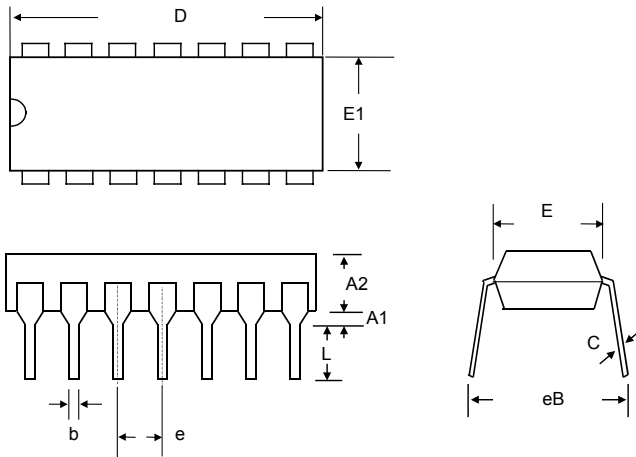
SYMBOL	MIN	MAX
A1	--	0.20
A2	0.76	0.97
b	0.15	0.30
C	0.13	0.23
D	2.90	3.10
E	4.80	5.00
E1	2.90	
e	0.50	
L	0.40	0.66

● 8 LEAD PLASTIC DIP (CN)



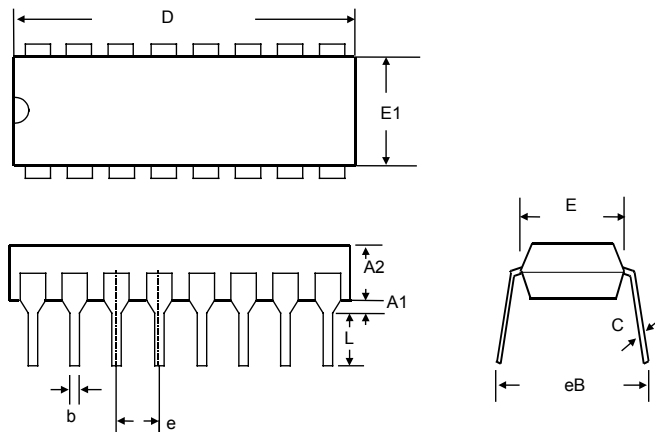
SYMBOL	MIN	MAX
A1	0.381	—
A2	2.92	4.96
b	0.35	0.56
C	0.20	0.36
D	9.01	10.16
E	7.62	8.26
E1	6.09	7.12
e	2.54 (TYP)	
eB	—	10.92
L	2.92	3.81

● 14 LEAD PLASTIC DIP (CN)



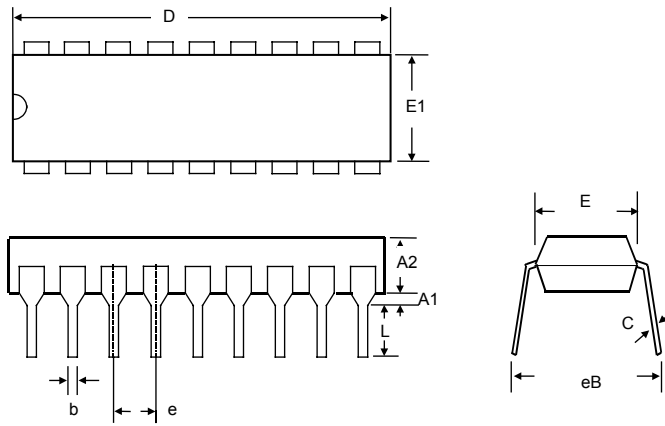
SYMBOL	MIN	MAX
A1	0.381	—
A2	2.92	4.96
b	0.35	0.56
C	0.20	0.36
D	18.66	19.69
E	7.62	8.26
E1	6.09	7.12
e	2.54 (TYP)	
eB	—	10.92
L	2.92	3.81

● 16 LEAD PLASTIC DIP (CN)



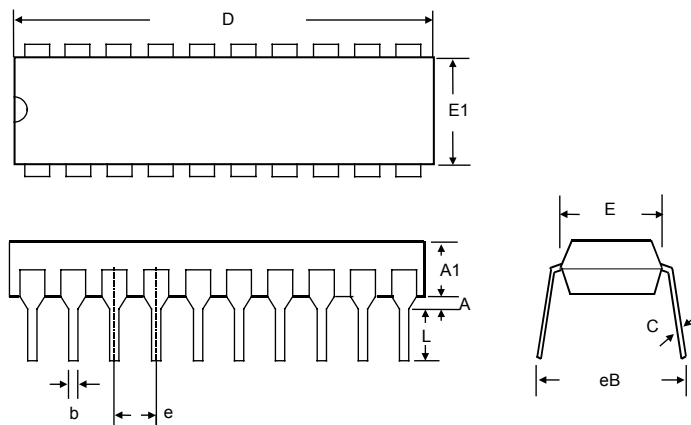
SYMBOL	MIN	MAX
A1	0.381	—
A2	2.92	4.96
b	0.35	0.56
C	0.20	0.36
D	18.66	19.69
E	7.62	8.26
E1	6.09	7.12
e	2.54(TYP)	
eB	—	10.92
L	2.92	3.81

● 18 LEAD PLASTIC DIP (CN)



SYMBOL	MIN	MAX
A1	0.381	—
A2	2.92	4.96
b	0.35	0.56
C	0.20	0.36
D	22.35	23.37
E	7.62	8.26
E1	6.09	7.12
e	2.54 (TYP)	
eB	—	10.92
L	2.92	3.81

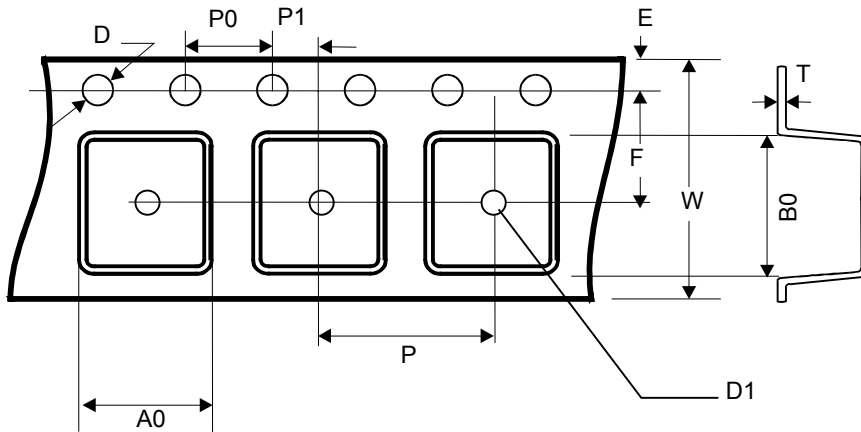
● 20 LEAD PLASTIC DIP (CN)



SYMBOL	MIN	MAX
A1	0.381	—
A2	2.92	4.96
b	0.35	0.56
C	0.20	0.36
D	24.89	26.93
E	7.62	8.26
E1	6.09	7.12
e	2.54(TYP)	
eB	—	10.92
L	2.92	3.81

■ TAPING DIMENSIONS

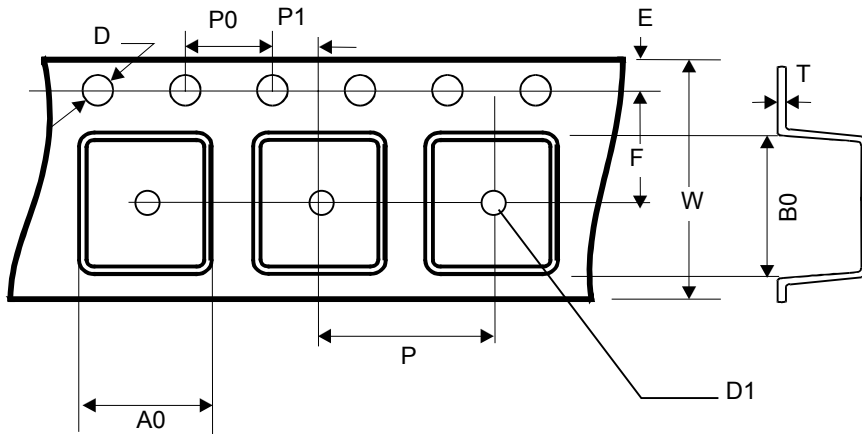
● TAPING OUTLINE DRAWING FOR SO SERIES



● CARRIER TAPE DIMENSIONS (Units: mm)

	SO8	SO16(N)	SO16(W)	SO20	SO24
W	12.00±0.50	16.00±0.50	16.00±0.50	24.00±0.50	24.00±0.50
P	8.00±0.10	8.00±0.10	12.00±0.10	12.00±0.10	12.00±0.10
E	1.75±0.10	1.75±0.10	1.75±0.10	1.75±0.10	1.75±0.10
F	5.50±0.10	7.50±0.10	7.50±0.10	11.50±0.10	11.50±0.10
D	1.55±0.10	1.55±0.10	1.50±0.10	1.50±0.10	1.50±0.10
D1	1.50±0.10	1.50±0.10	1.60±0.10	1.60±0.10	1.60±0.10
P0	4.00±0.10	4.00±0.10	4.00±0.10	4.00±0.10	4.00±0.10
P1	2.00±0.10	2.00±0.10	2.00±0.10	2.00±0.10	2.00±0.10
A0	6.30±0.10	6.20±0.10	10.90±0.10	10.90±0.10	10.90±0.10
B0	5.20±0.10	10.30±0.10	10.70±0.10	13.30±0.10	15.90±0.10
K0	2.10±0.10	2.10±0.10	3.00±0.10	2.50±0.10	3.10±0.10
T	0.30±0.05	0.30±0.05	0.30±0.05	0.30±0.05	0.30±0.05

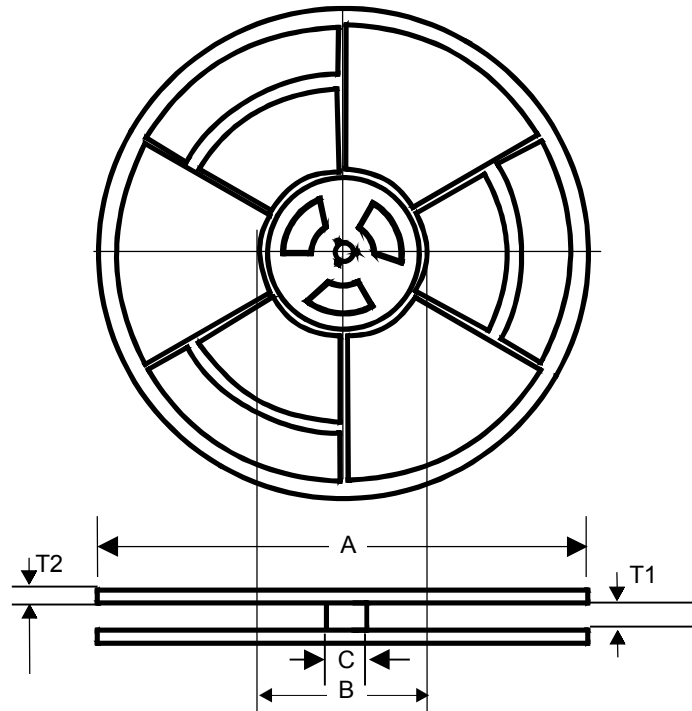
● REEL OUTLINE DRAWING FOR SOT, TO SERIES



● CARRIER TAPE DIMENSIONS (Units: mm)

	SOT-89	SOT-223	SOT23/25/26	TO252	TO263
W	13.0±1.0	12.00±0.50	8.00±0.20	16.00±0.50	24.00±0.50
P	8.00±0.10	8.00±0.10	4.00±0.10	8.00±0.10	16.00±0.10
E	1.75±0.10	1.75±0.10	1.75±0.10	1.75±0.10	1.75±0.10
F	5.50±0.10	5.50±0.10	3.50±0.10	7.50±0.10	11.50±0.10
D	1.50±0.10	1.50±0.10	1.50±0.10	1.50±0.10	1.50±0.10
D1	1.50±0.10	1.50±0.10	1.10±0.10	1.50±0.10	1.50±0.10
P0	4.00±0.10	4.00±0.10	4.00±0.10	4.00±0.10	4.00±0.10
P1	2.00±0.10	2.00±0.10	2.00±0.10	2.00±0.10	2.00±0.10
A0	4.80±0.10	6.90±0.10	3.30±0.10	6.80±0.10	10.80±0.10
B0	4.50±0.10	7.50±0.10	3.20±0.10	10.40±0.10	16.10±0.10
K0	1.80±0.10	2.10±0.10	1.75±0.10	2.50±0.10	5.20±0.10
T	0.30±0.05	0.30±0.05	0.25±0.05	0.30±0.05	0.30±0.05

● REEL OUTLINE DRAWING (Units: mm)

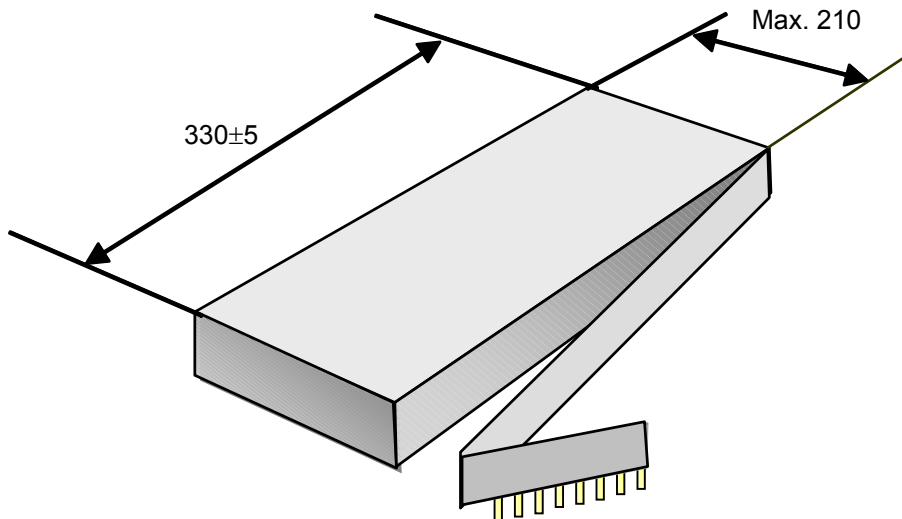
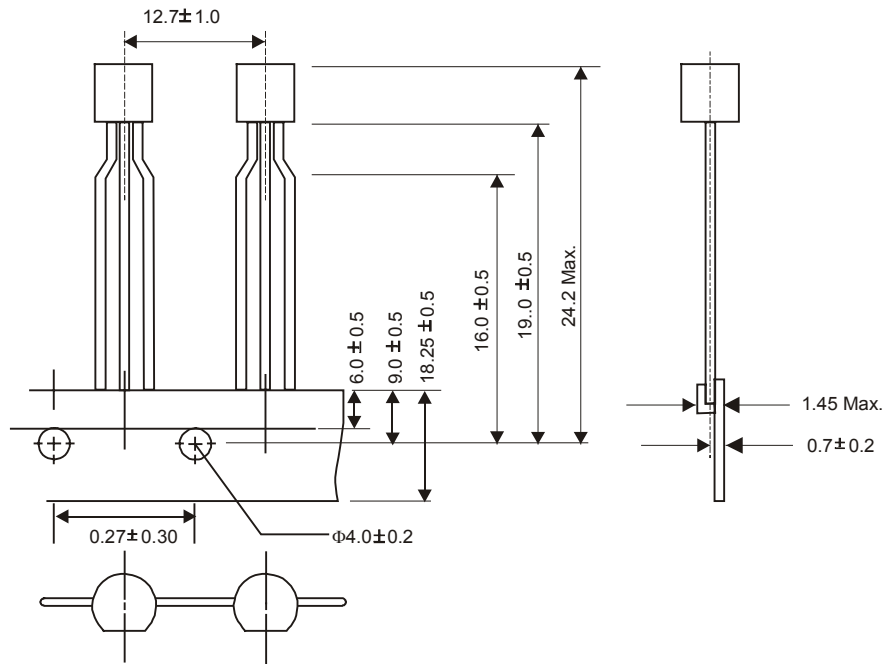


● REEL DIMENSIONS (Units: mm)

	SO8	SO16(N)	SO16(W)	SO20	SO24
A	330.0±3.0	330.0±3.0	330.0±3.0	330.0±3.0	330.0±3.0
B	100.0±2.0	100.0±2.0	100.0±2.0	100.0±2.0	100.0±2.0
C	13.0±0.5	13.0±0.5	13.0±0.5	13.0±0.5	13.0±0.5
T1	12.4±0.3	16.4±0.3	16.4±0.3	24.4±0.3	24.4±0.3
T2	2.0±0.5	2.5±0.5	2.5±0.5	2.5±0.5	2.5±0.5
IC Contained	2000	2000	1500	1000	1000

	SOT-89	SOT-223	SOT23/25/26	TO252	TO263
A	180.0±3.0	330.0±3.0	180.0±3.0	330.0±3.0	380.0±3.0
B	63.0±3.0	100.0±2.0	60.0±2.0	100.0±2.0	100.0±2.0
C	13.0±0.5	13.0±0.5	13.0±0.5	13.0±0.5	13.0±0.5
T1	14.0±2.0	12.4±0.3	9.0±0.3	16.4±0.3	24.0±4.0
T2	1.3±0.5	2.5±0.5	1.2±0.5	2.5±0.5	2.0±0.5
IC Contained	1000	2500	3000	2500	1000

● TO-92 TAPING



2000 Pieces of ICs can be contained in one box.