



[原创]PADS2005 详细安装方法!!!!!!!

1.下载后的文件...LICENSE 是通行证文件..最后的是一个 ISO 文件可以用第一个虚拟光区文件来打开.....

 此主题相关图片




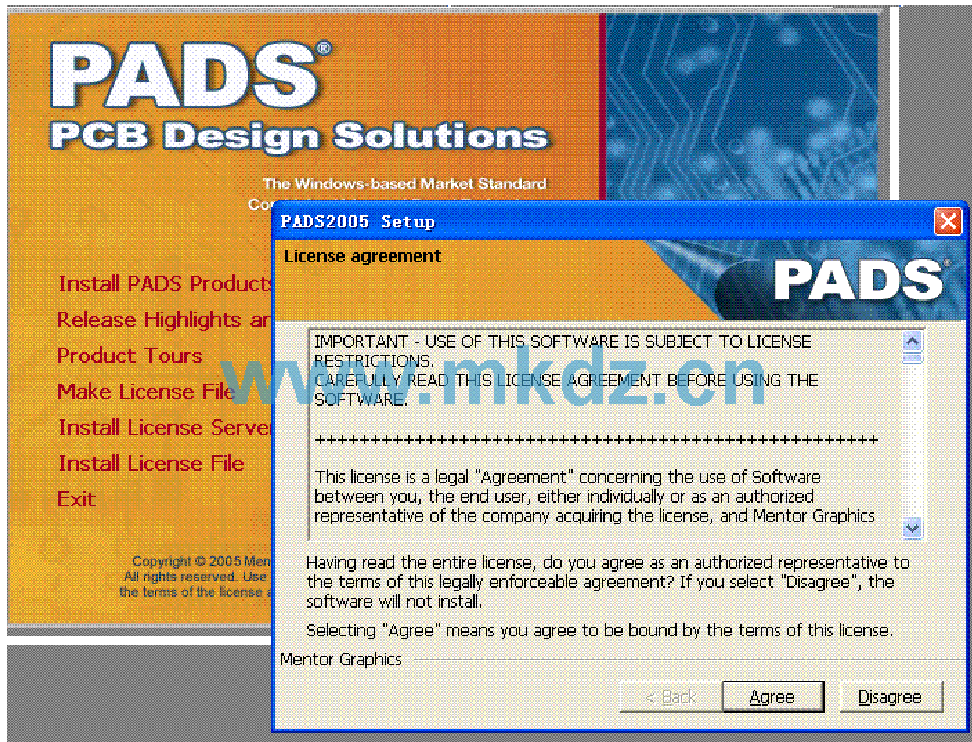
2.打开文件后,会弹出一个安装界面...这里我们选择第一个 INSTALL PADS PRODUCTS

 此主题相关图片




3.点击安装后,会弹出这个界面,这里选择.AGREE

 此主题相关图片




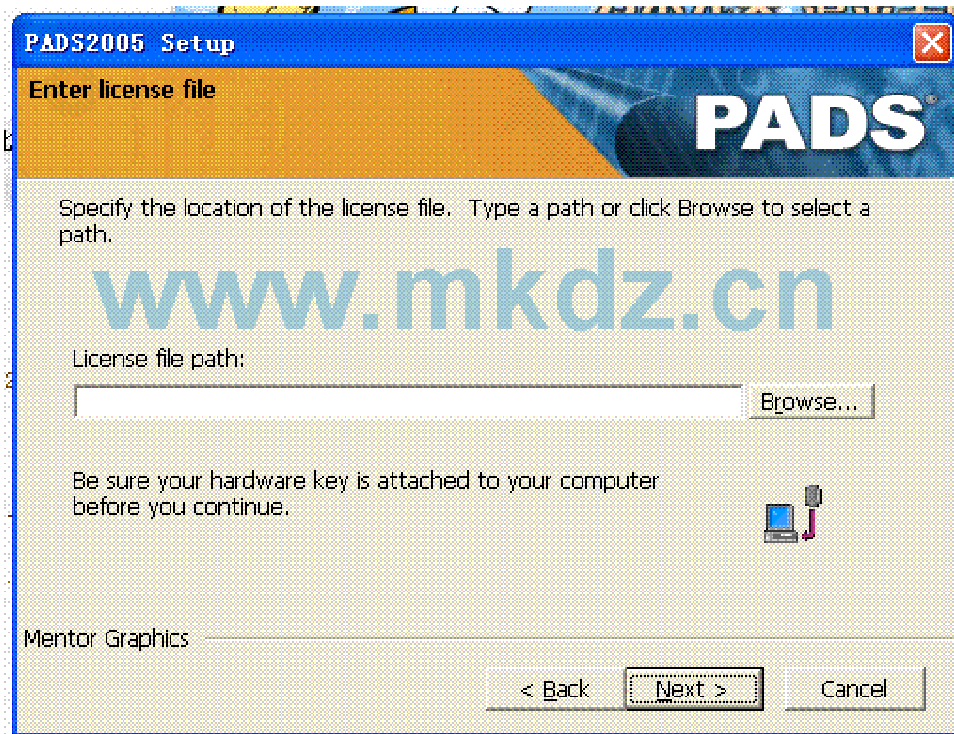
4.选择第一个,然后 NEXT...

 此主题相关图片




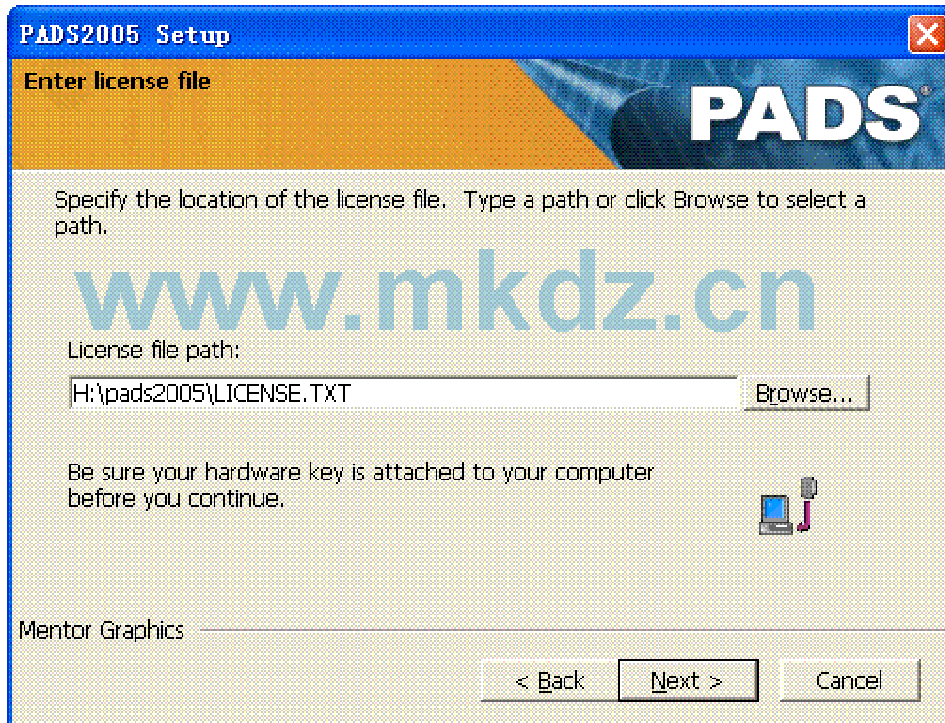
5. 这步就是要找到你 LICENSE 文件...

 此主题相关图片




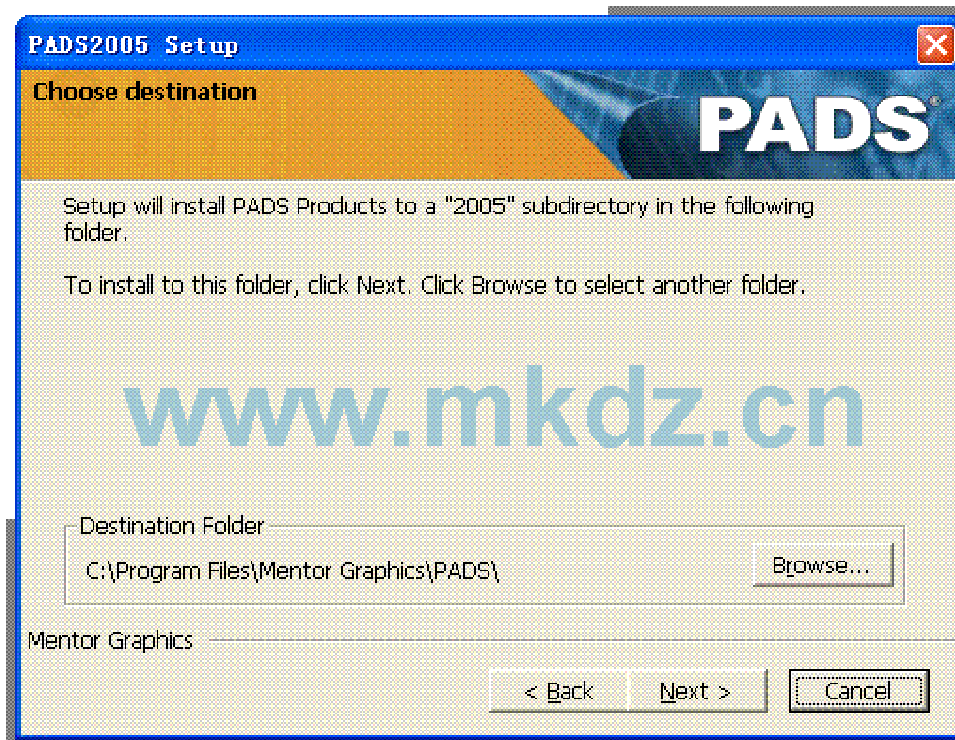
6. 找到它，再点 N E X T ...

 此主题相关图片




7.选择安装路径....找一个地方就可以了....NEXT

 此主题相关图片




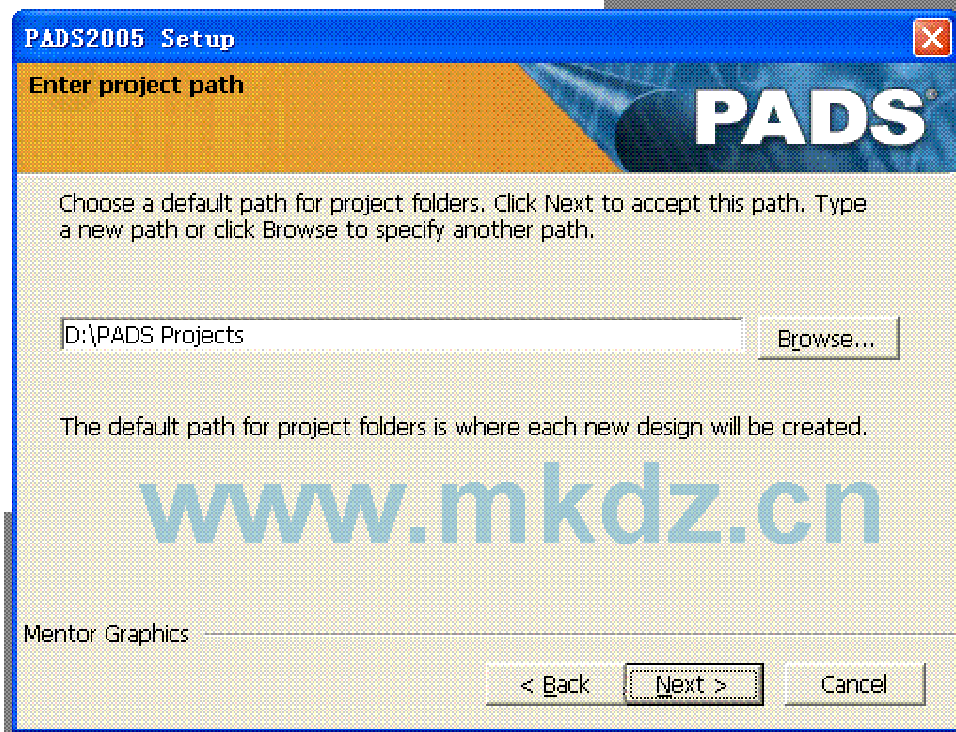
8.选择你要安装的组件....第一个是画原理图工具,第二个是画 PCB 工具..第三个是自动布线..第四个 PCB 仿真,第五个元件库...然后 NEXT

 此主题相关图片




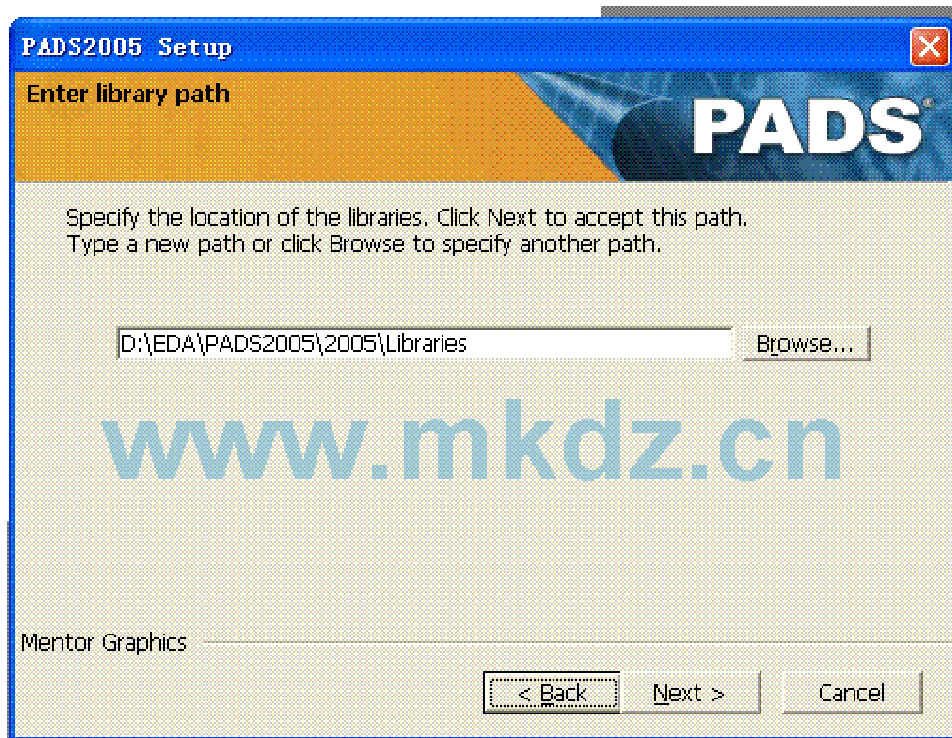
9.选择你工作路径...自己定义一个地方...然后 NEXT

 此主题相关图片




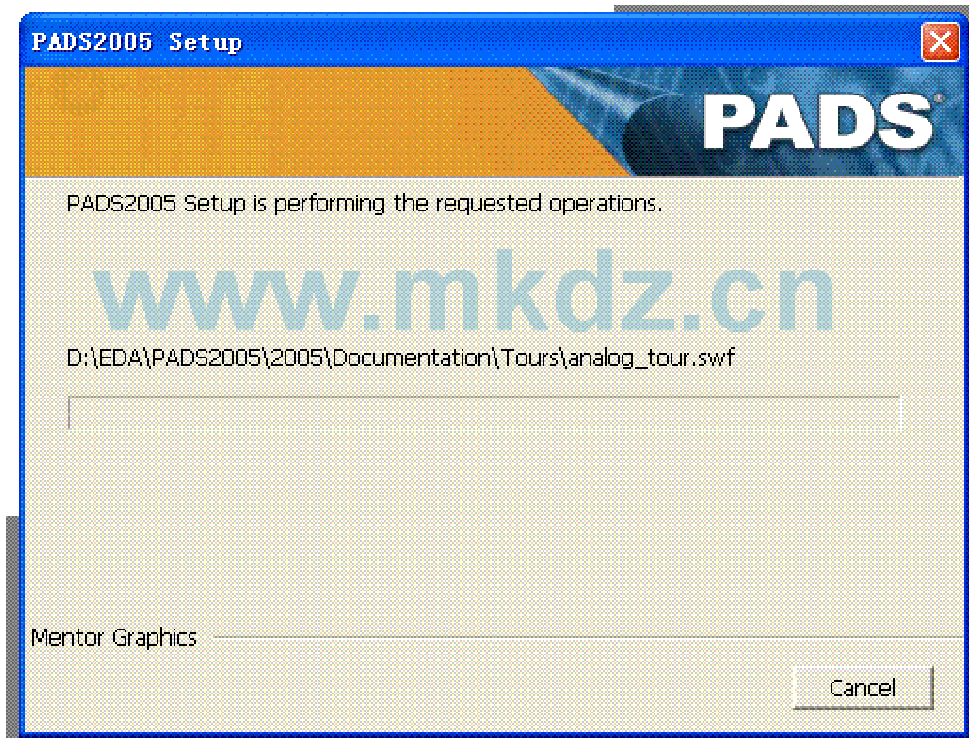
10.元件库路径...一般默认.....NEXT

 此主题相关图片




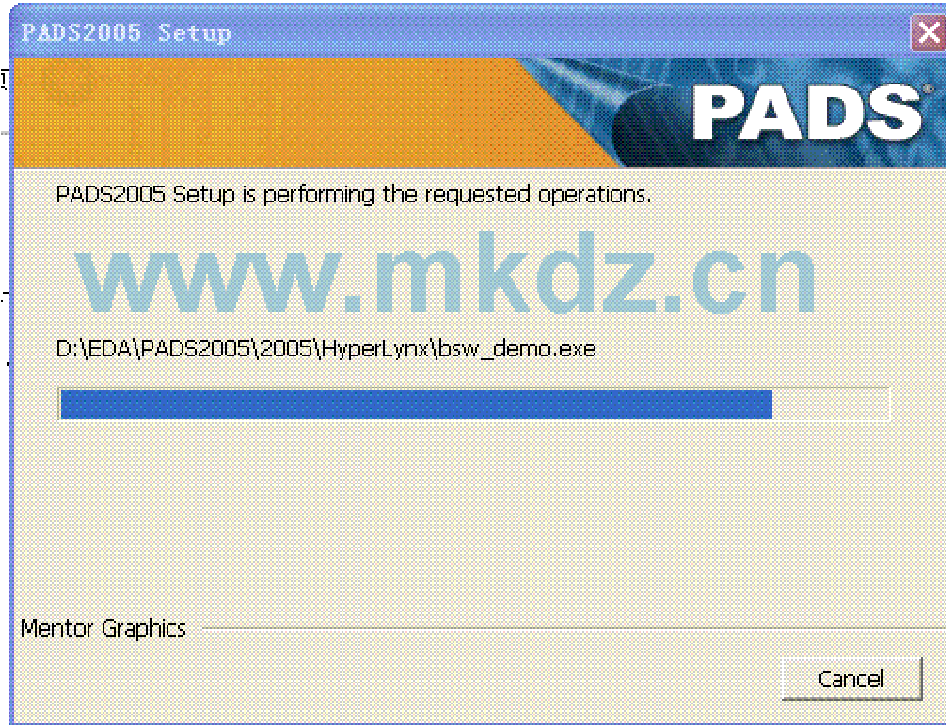
11.现在是开始安装的样子.

 此主题相关图片




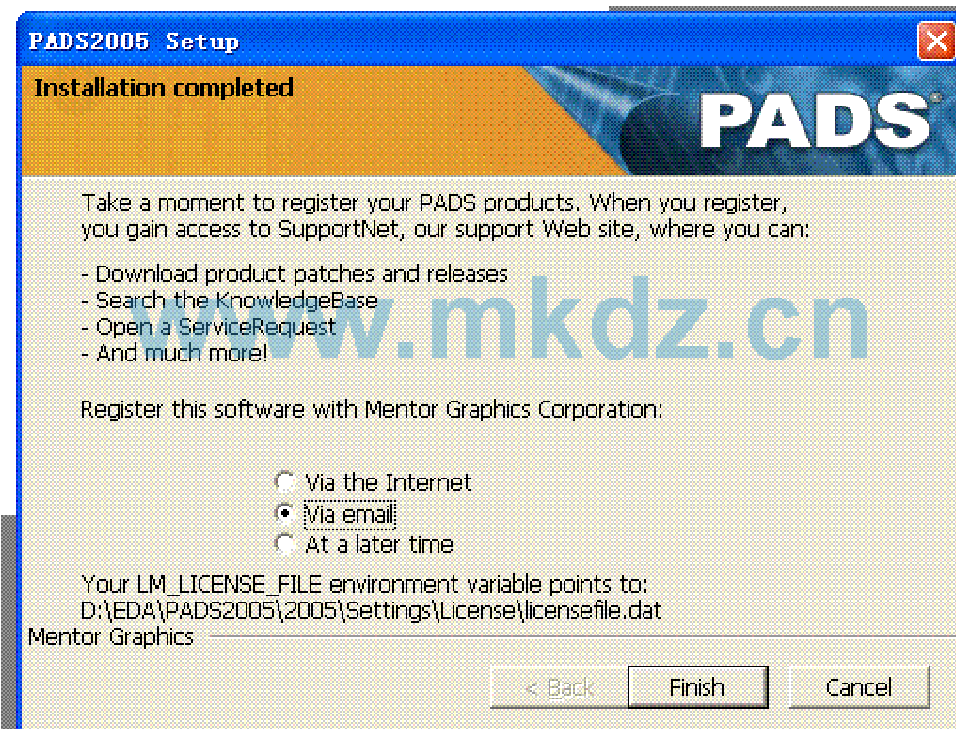
12.安装一半的时候,安装时间长短,是根据你机子性能...

 此主题相关图片




13.选择 VIA EMAIL...然后 FINISH 就 OK...安装完毕...

 此主题相关图片




14. 安装完毕后,桌面会有这么几个图标!!!

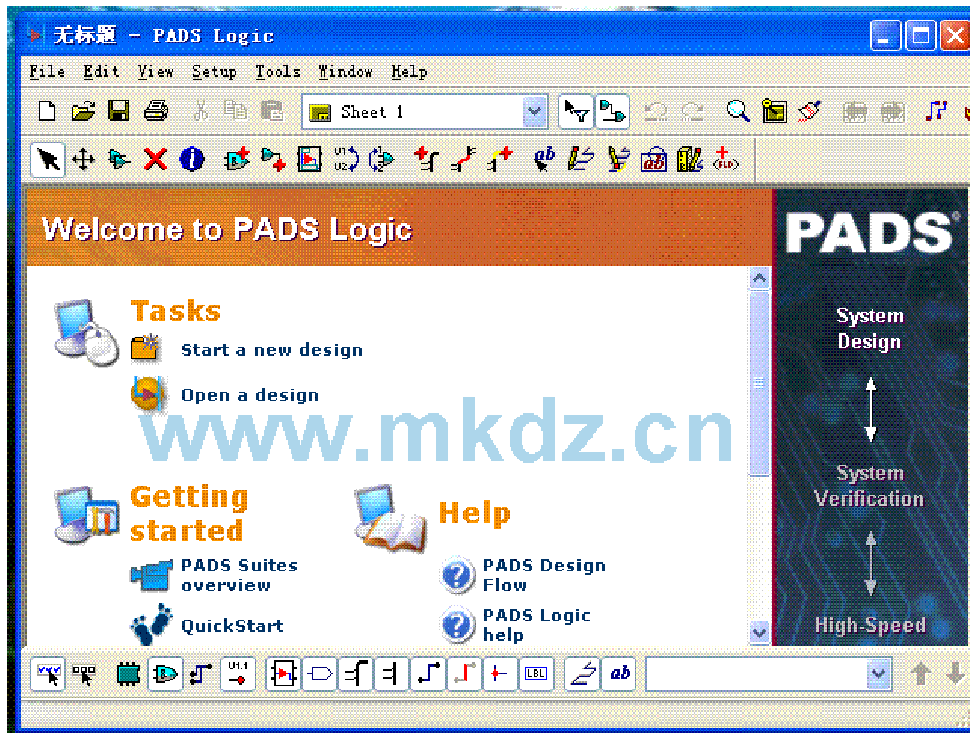
第一个画 SCH,第二个画 PCB,第三个自动布线,第四个 PCB 仿真..

 此主题相关图片




15. 打开原理图工具的样子...

 此主题相关图片



16. 打开 PCB 工具的样子.

 此主题相关图片

