

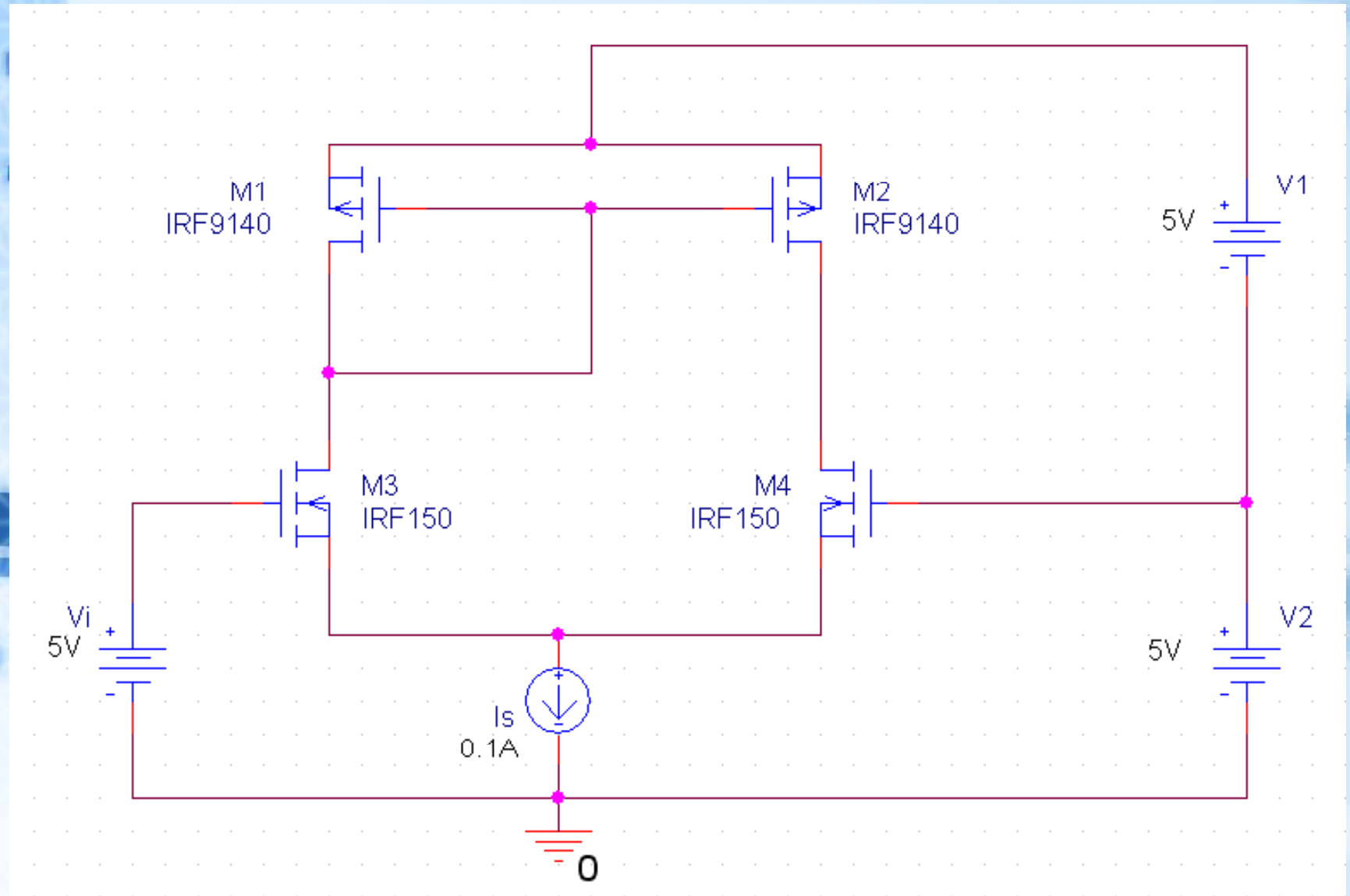
习题

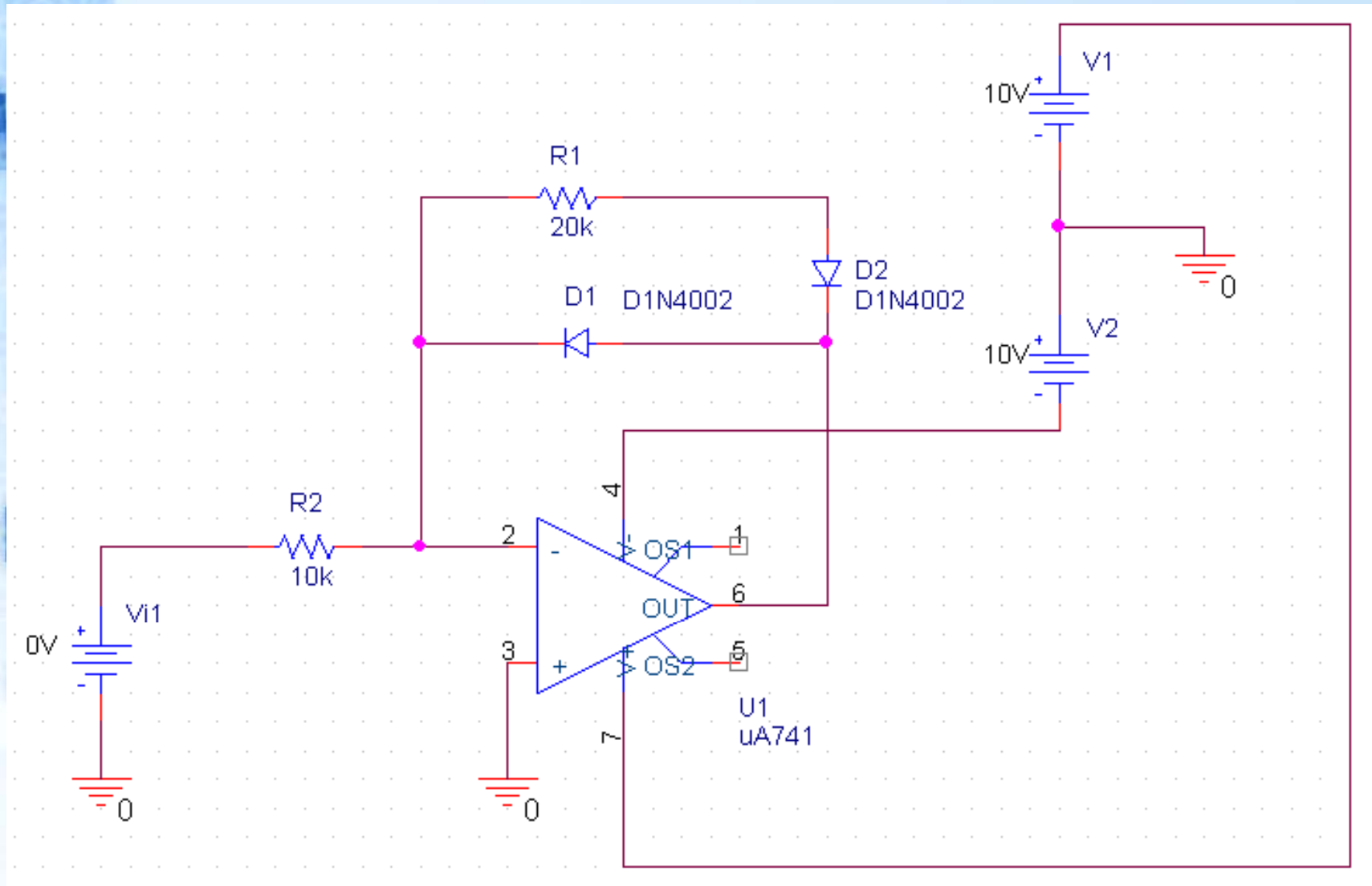
➤ 绘制如下电路

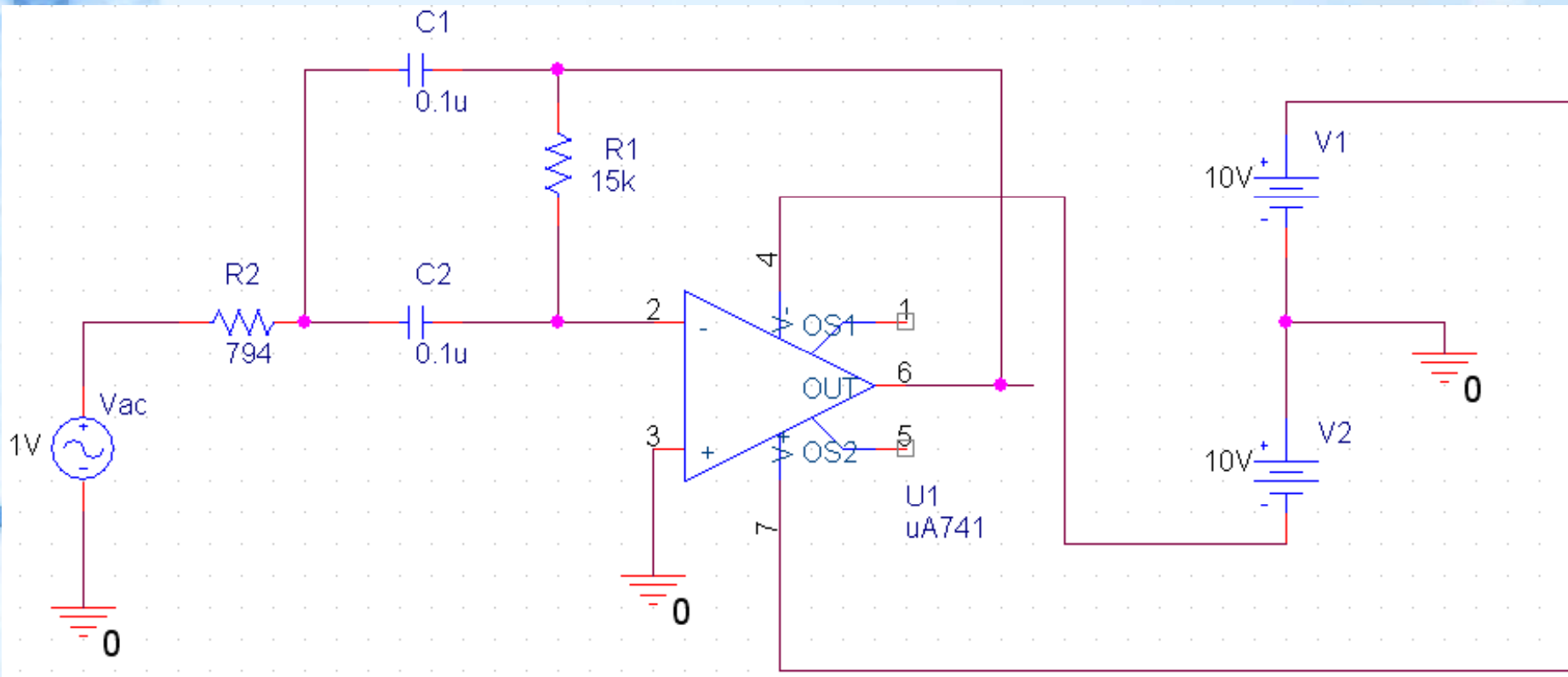
- CMOS差动放大电路
- OP-Amp全波整流电路
- OP-Amp低通滤波电路
- TTL IC 的脉冲产生电路
- IC 555 脉冲波发生电路

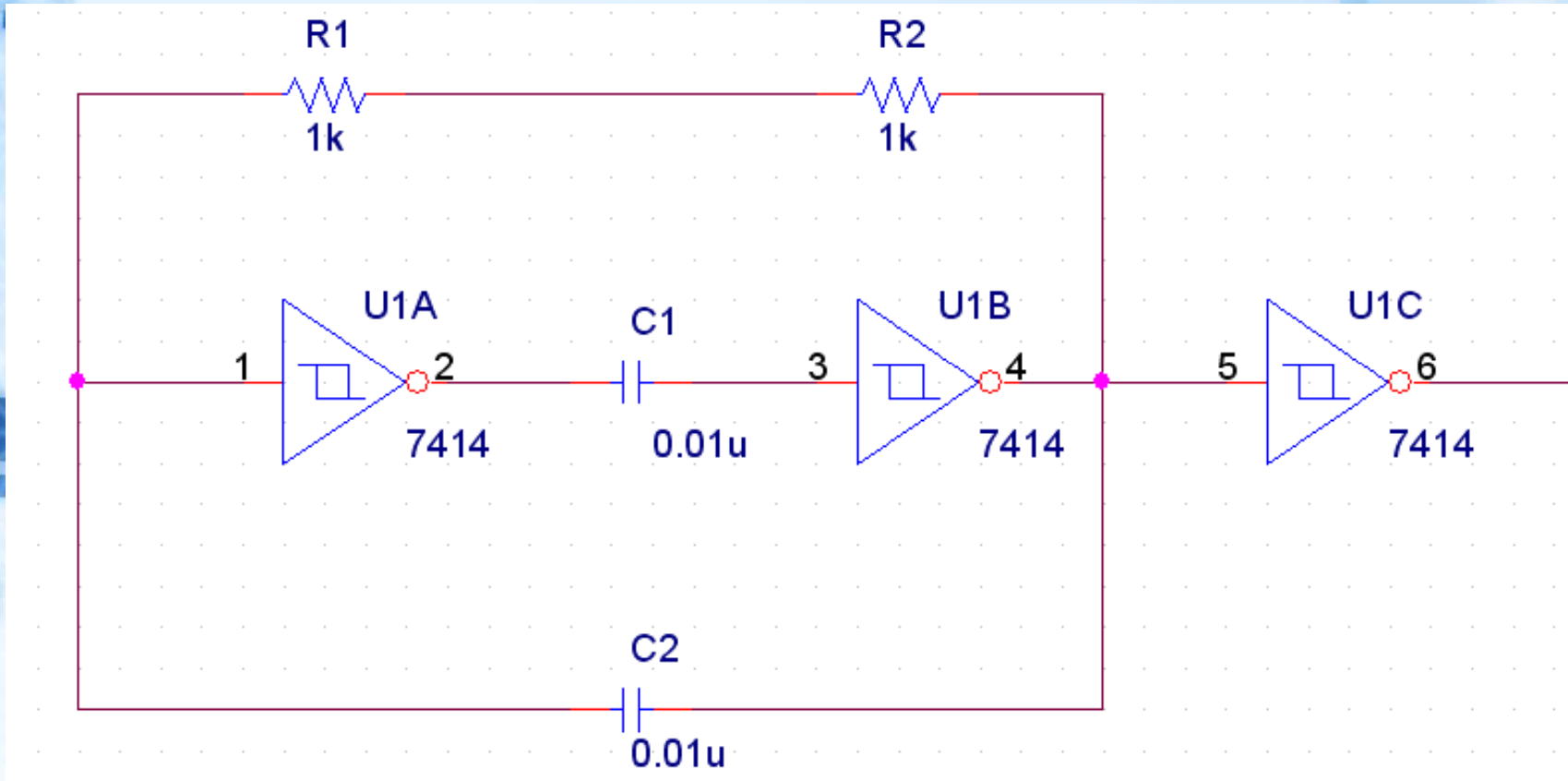
➤ 应用元件库

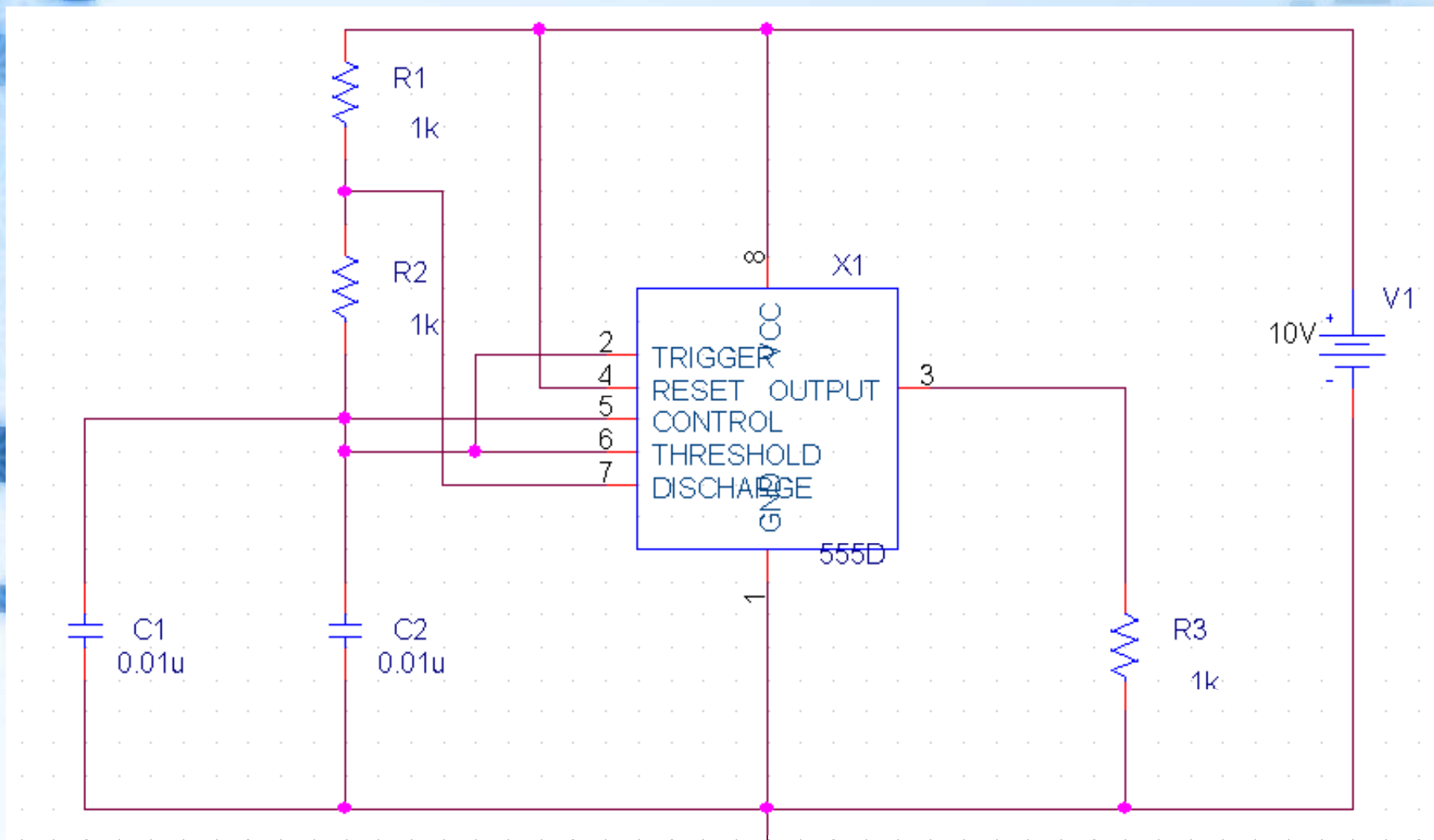
- analog.olb source.olb eval.olb





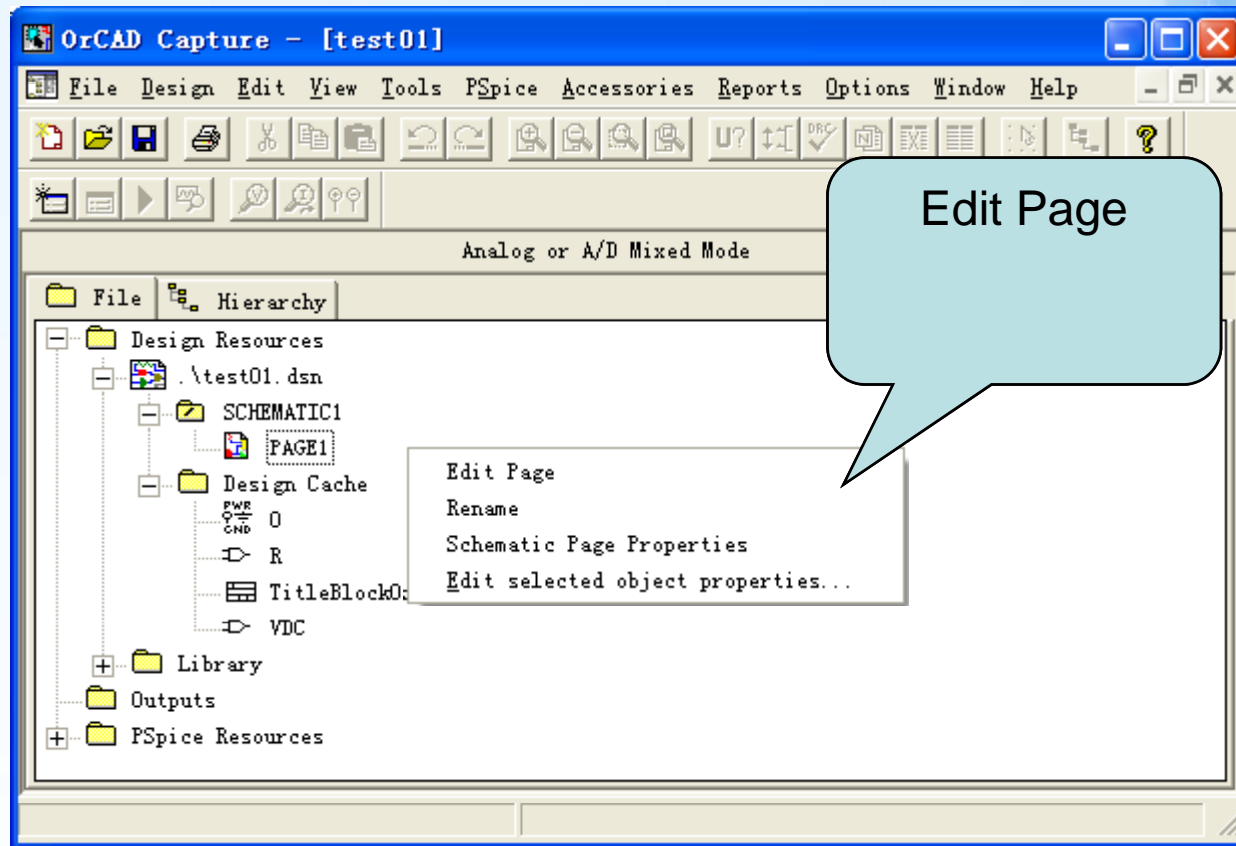




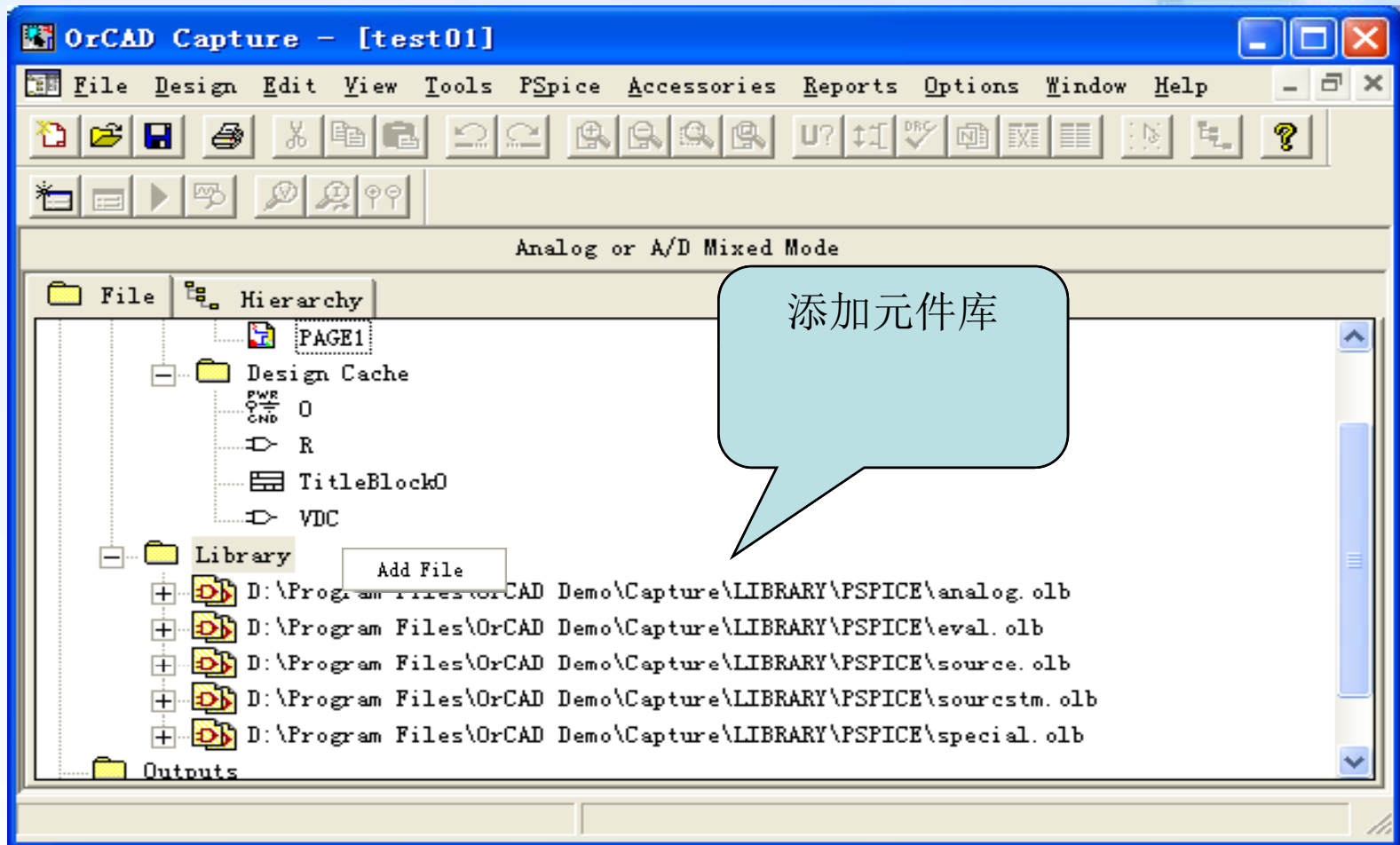


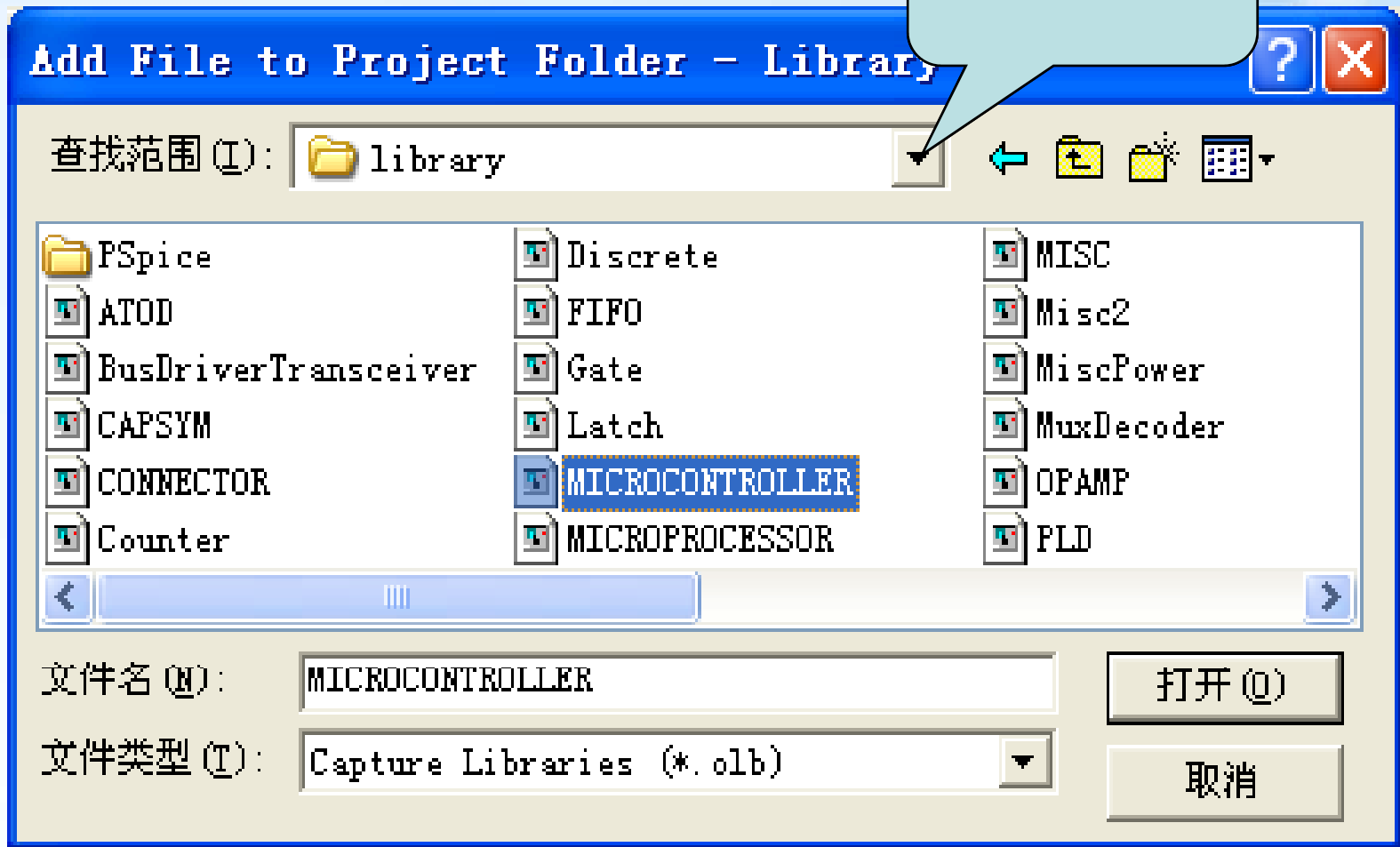
5 高级电路图绘制技巧

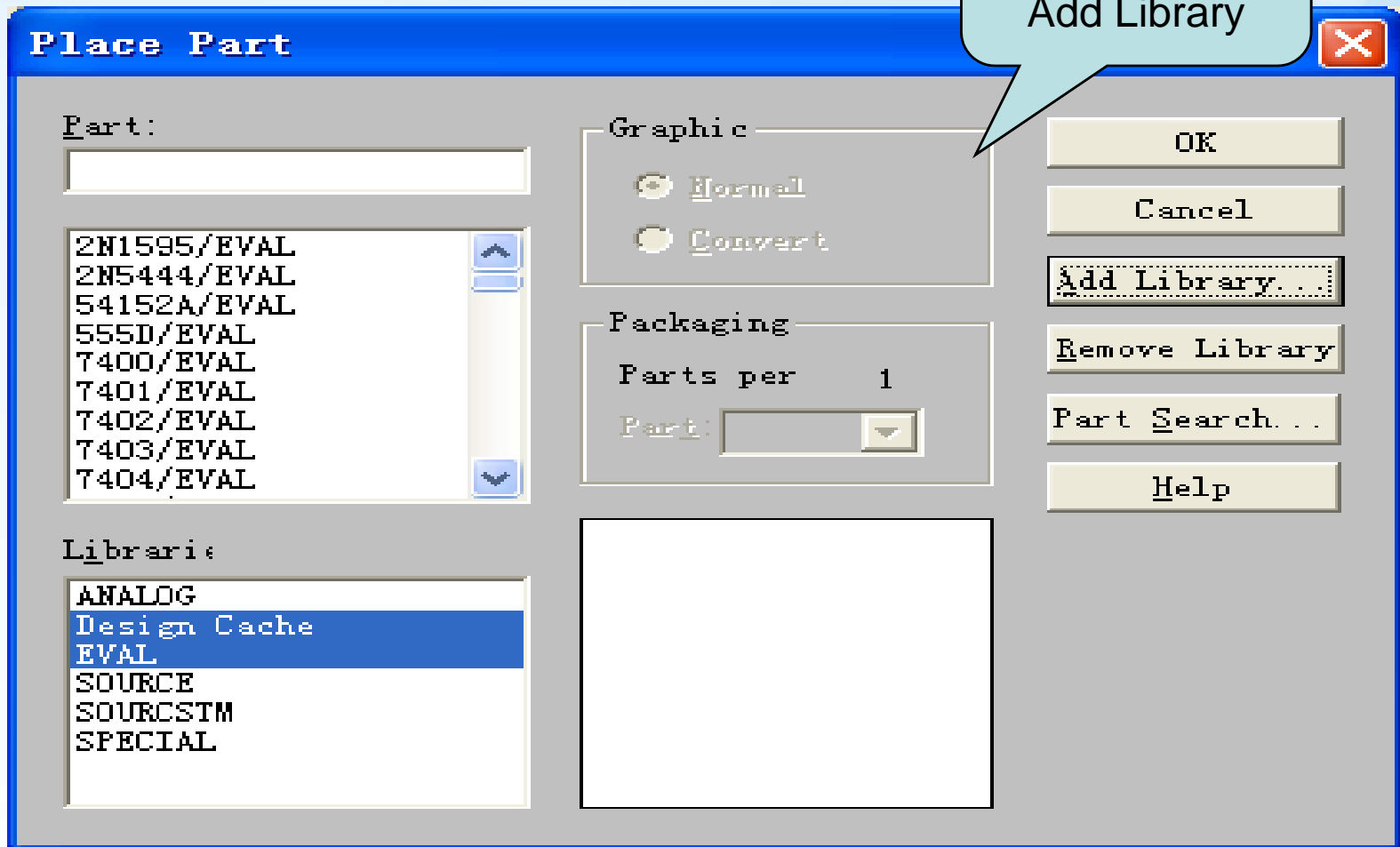
➤ 5.1 图纸的打开

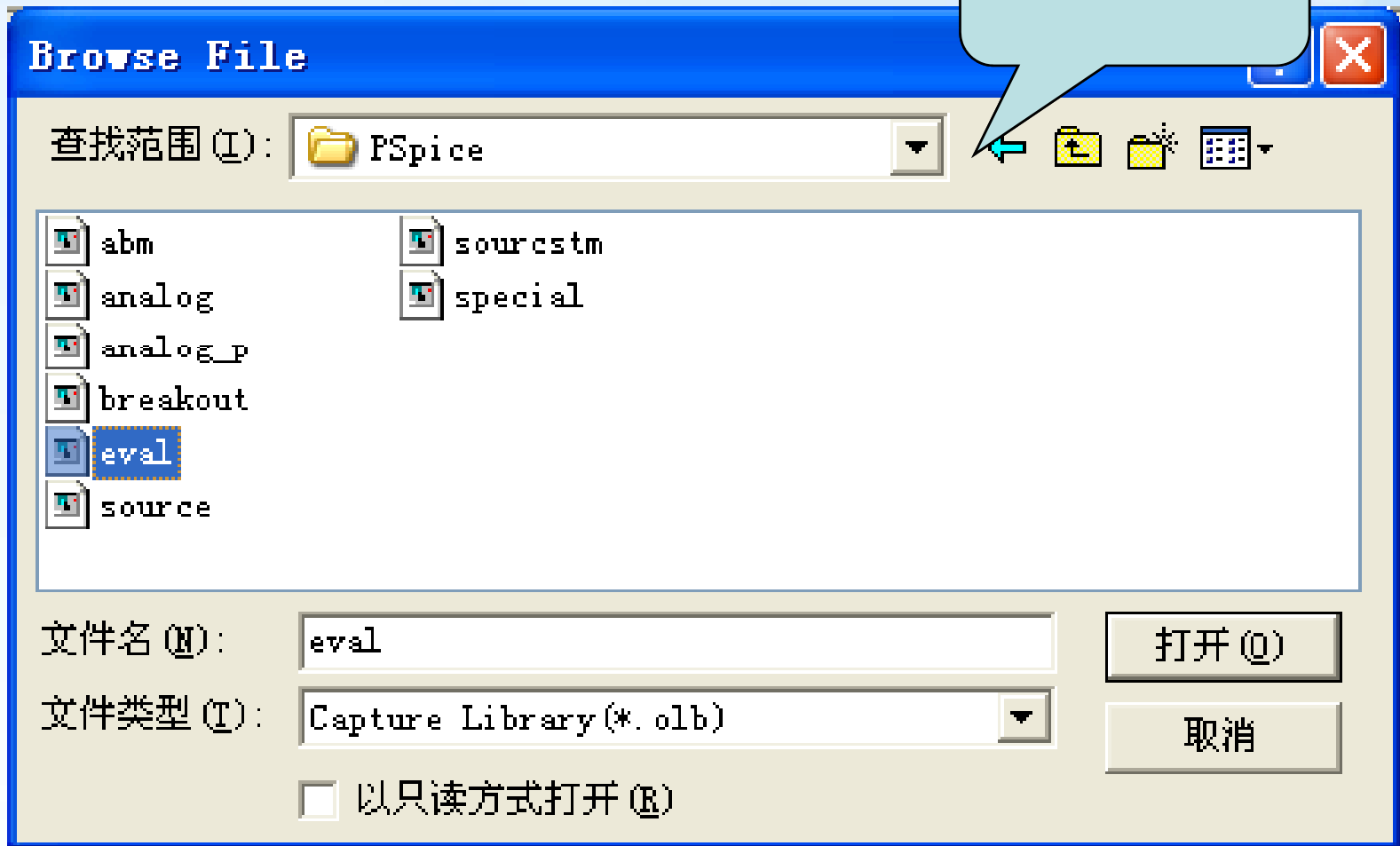


5.2 新增元件库



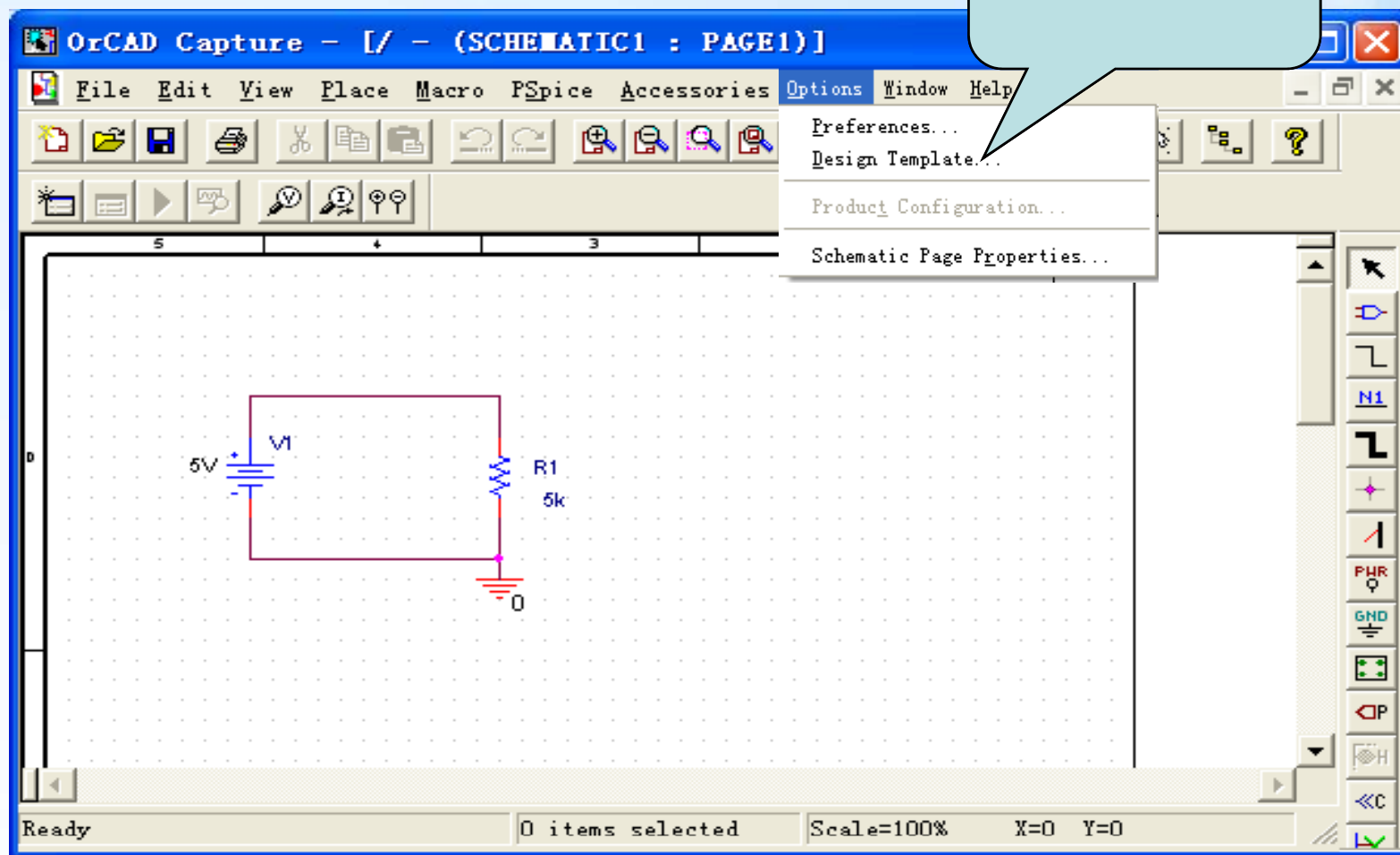




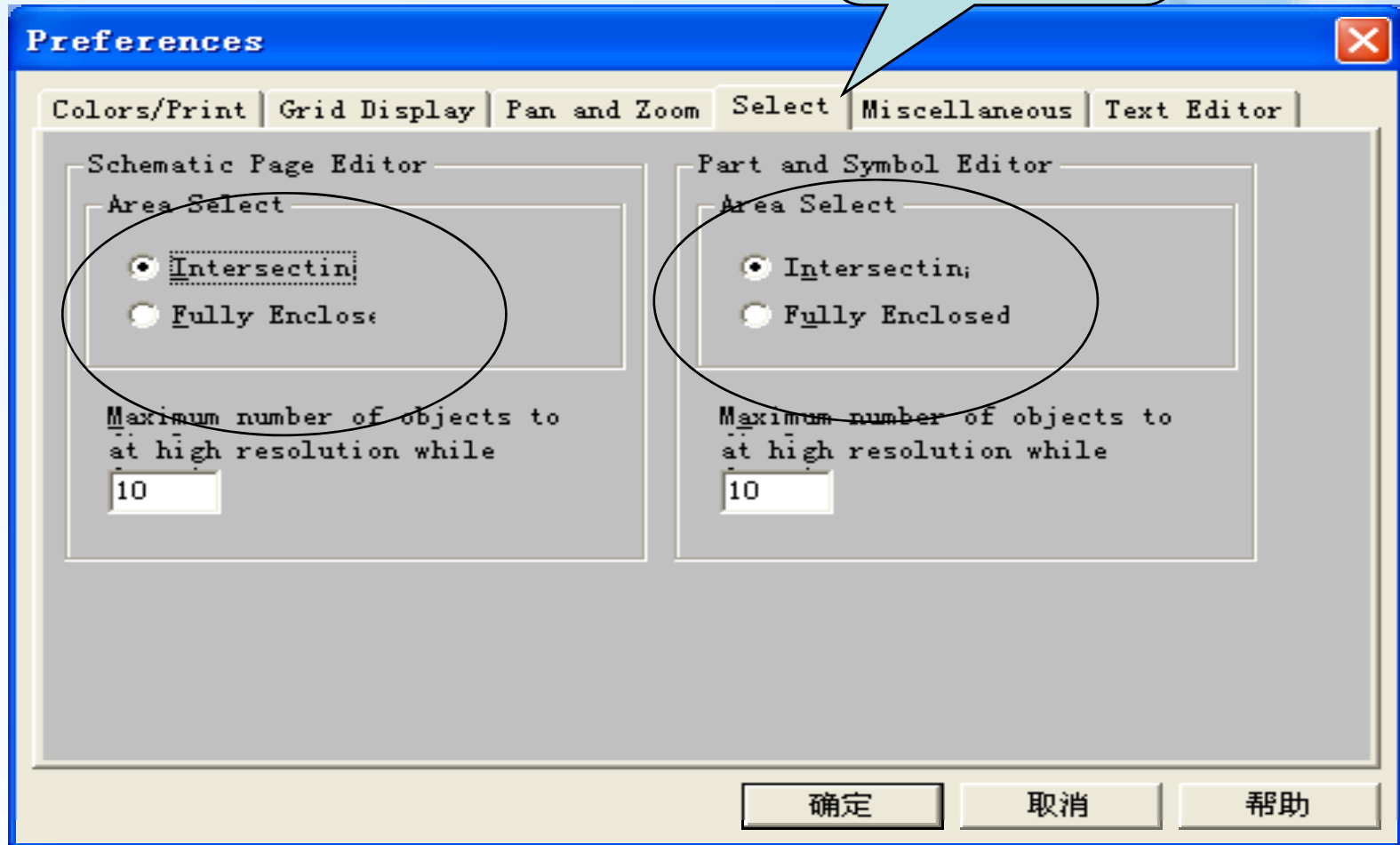


5.3 变更鼠标选取对象方式

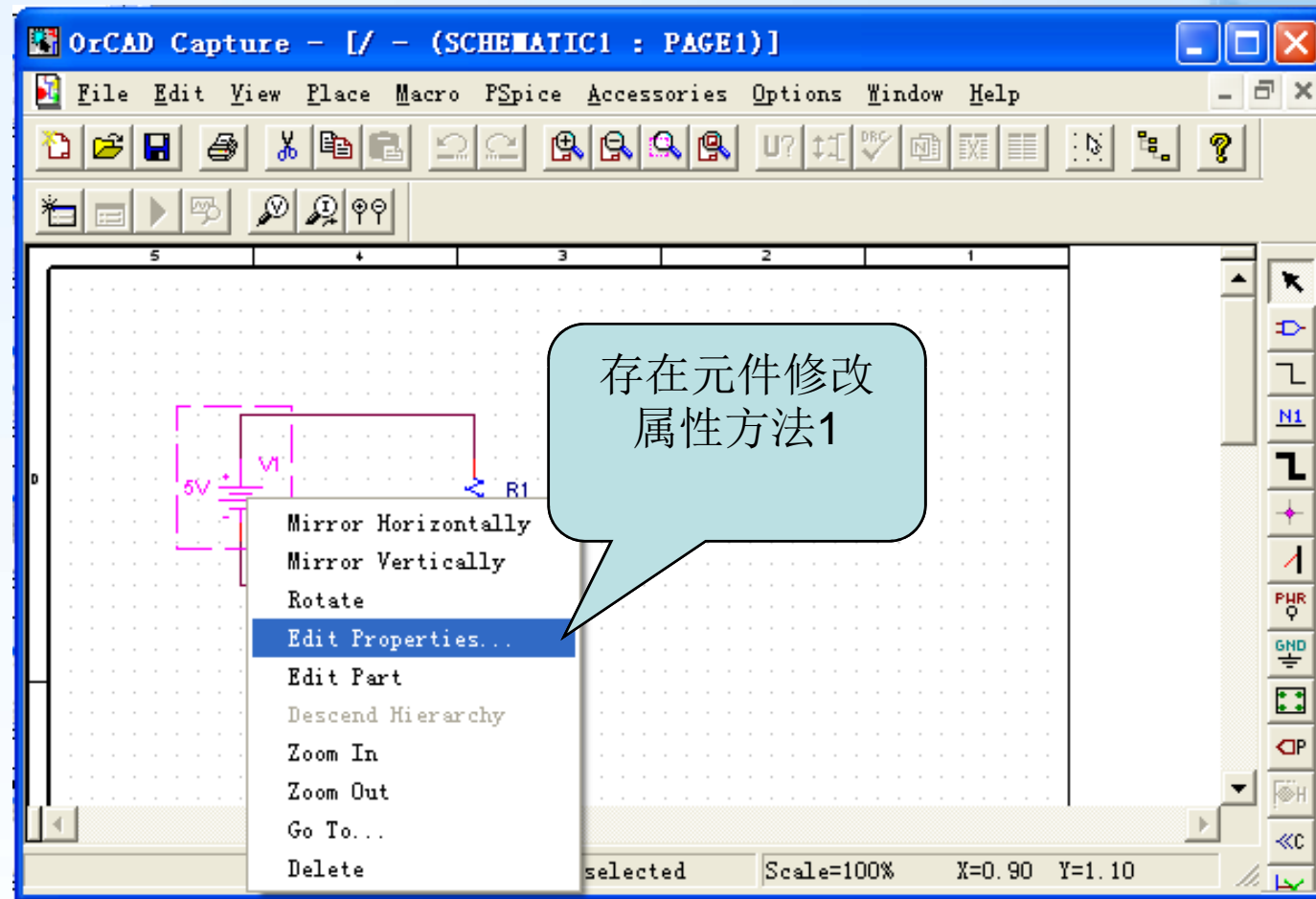
部分选中、
还是全部选中

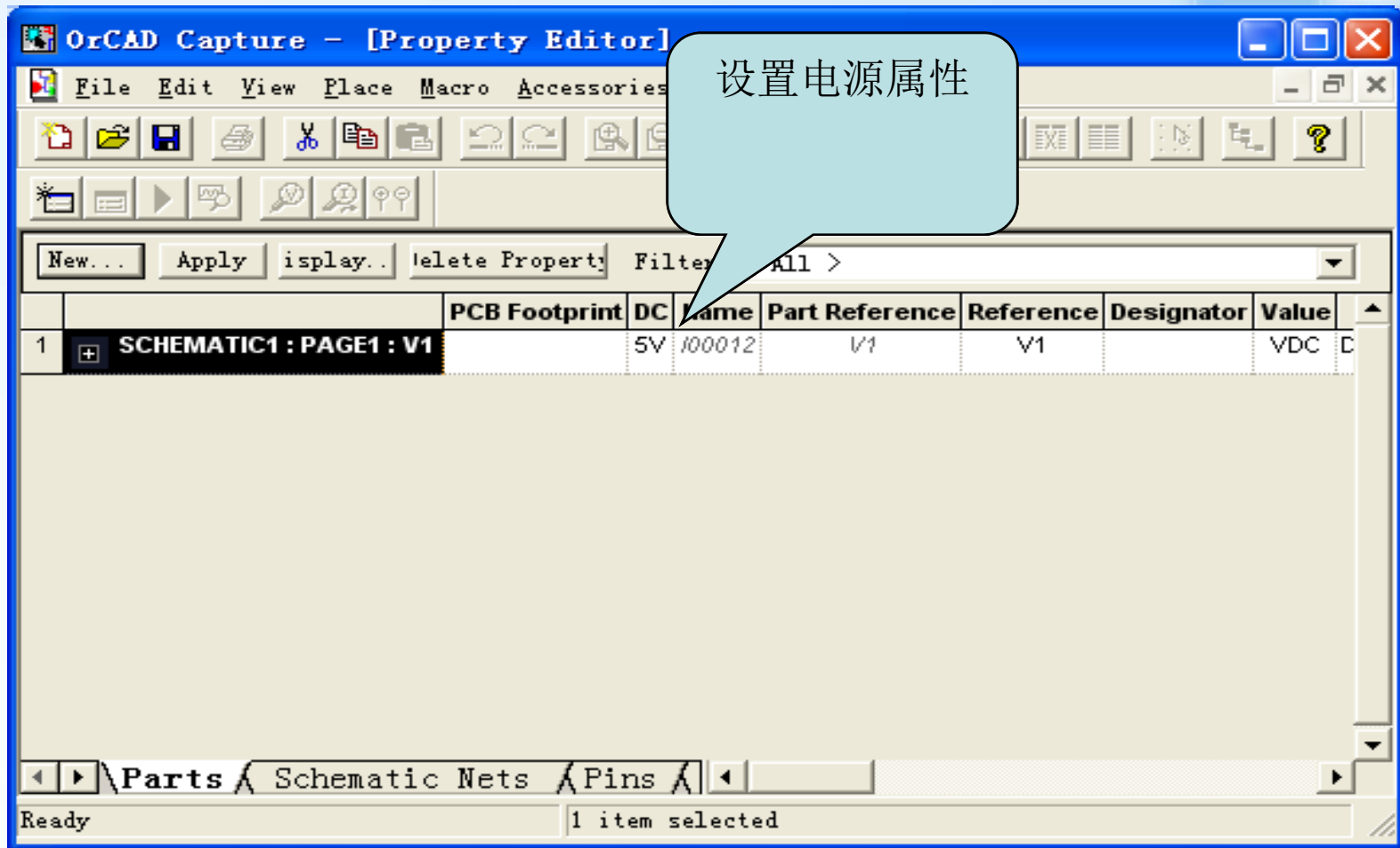


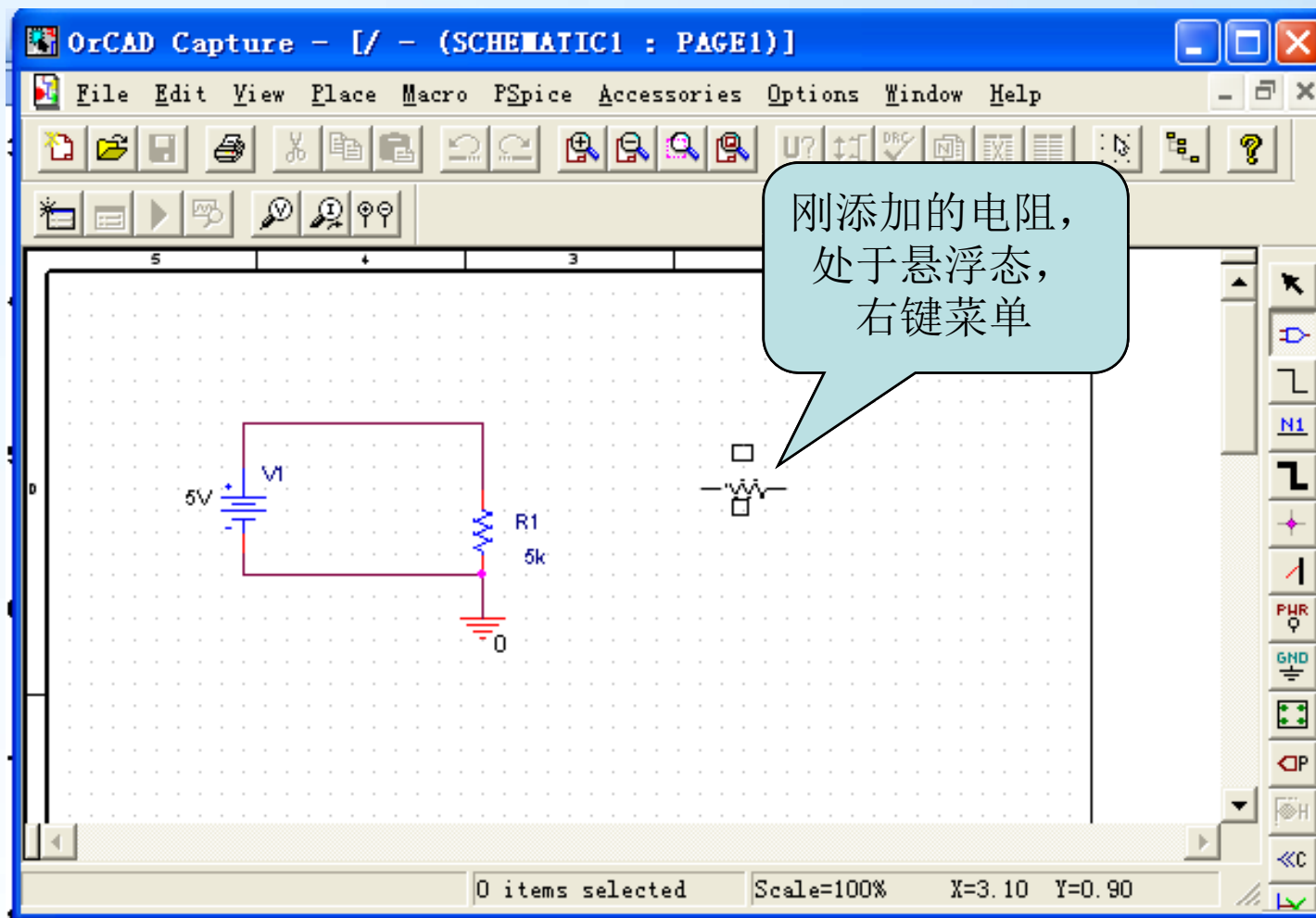
Select选项卡



5.4 修改对象属性







属性窗体

Edit Part [X]

Part Value:

Part Reference:

Primitive

Default

Yes

No

Graphic

Normal

Convert

Packaging

Parts per

Part: ▼

PCB

Power Pins Visible

OK

Cancel

User Properties...

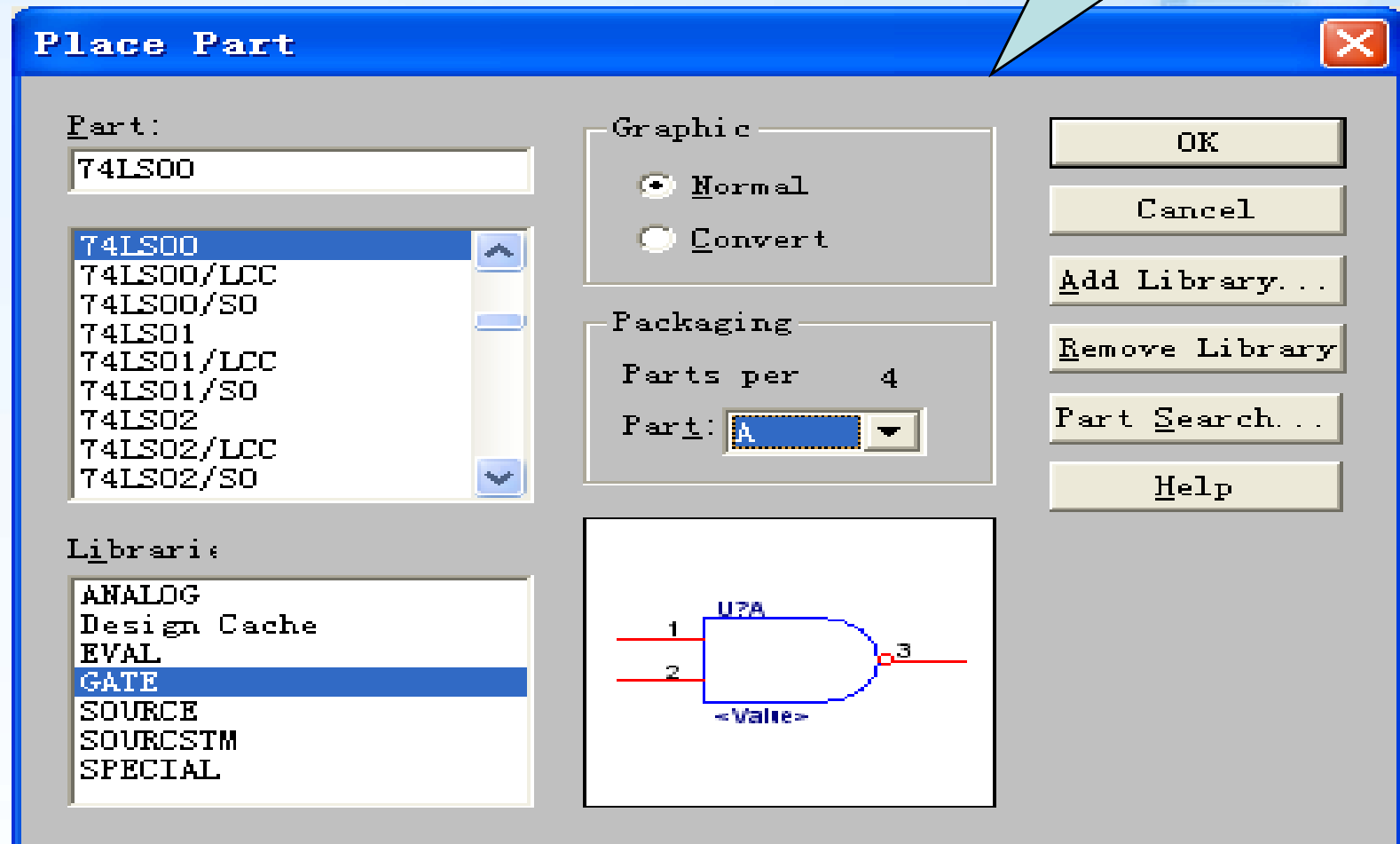
Attach Implementation..

Help

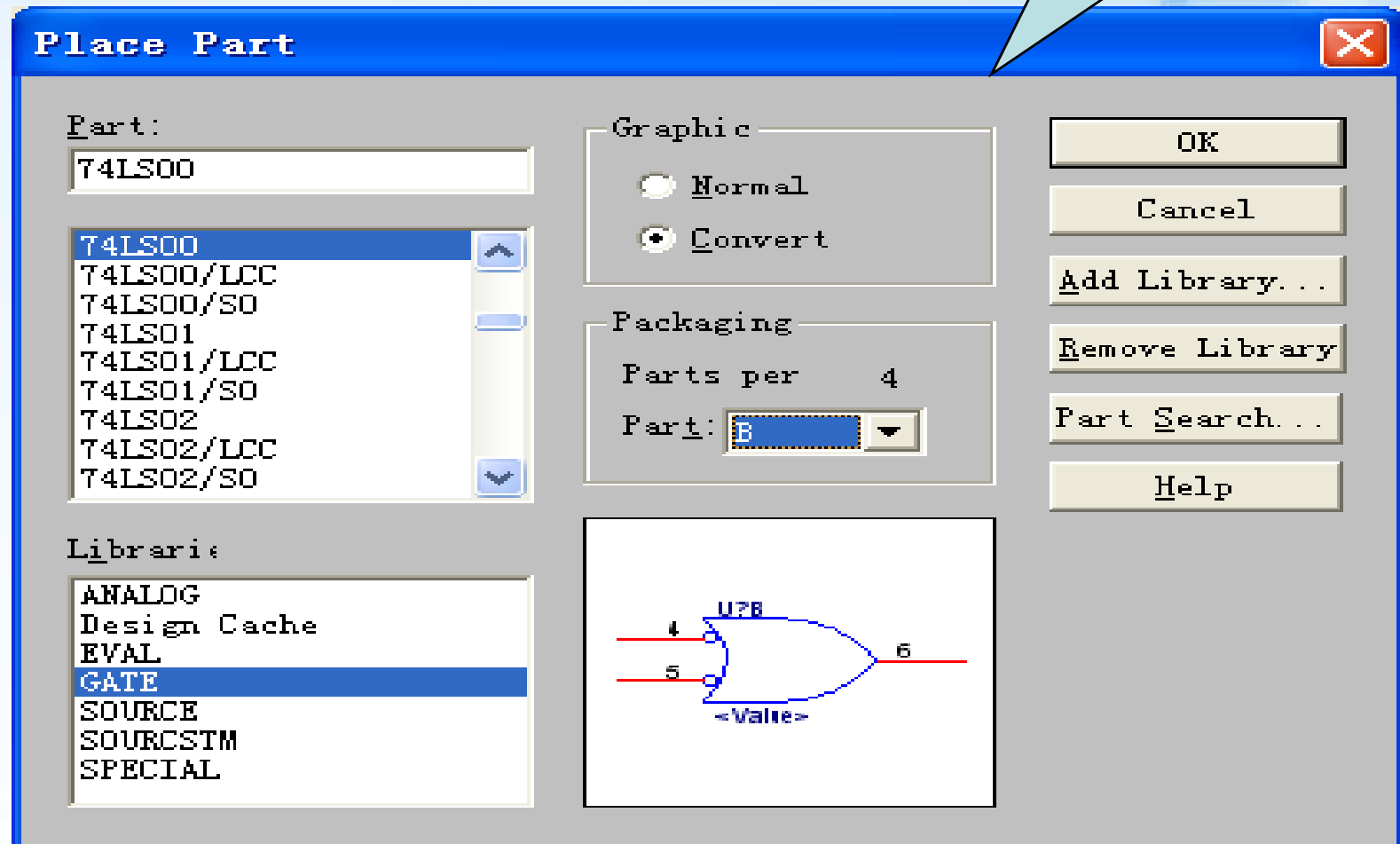
D:\PROGRAM FILES\ORCAD DEMO\CAPTURE\LIBRARY\PSPICE\ANALOG.OLB - R

- PartValue 元件值
- Part Reference 元件序号
- Primitive 是否为最底层元件
- Graphic 元件外观
- Packaging 封装内元件选择
- PCB Footprint 元件封装外形
- Power Pins Visible 显示电源管脚

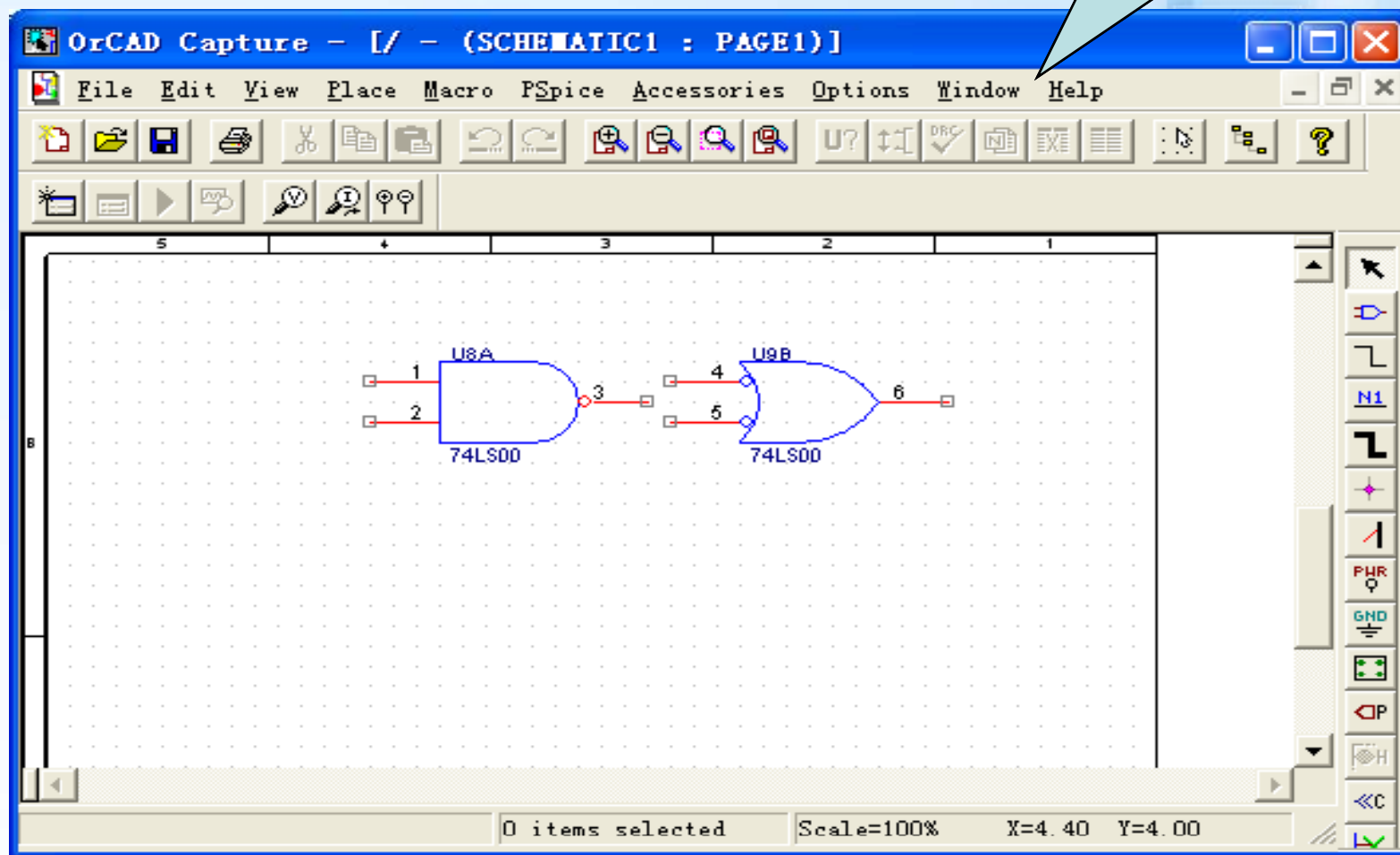
Graphic
&Packing



Graphic
&Packing



电路效果



User Properties

User Properties [X]

Properties

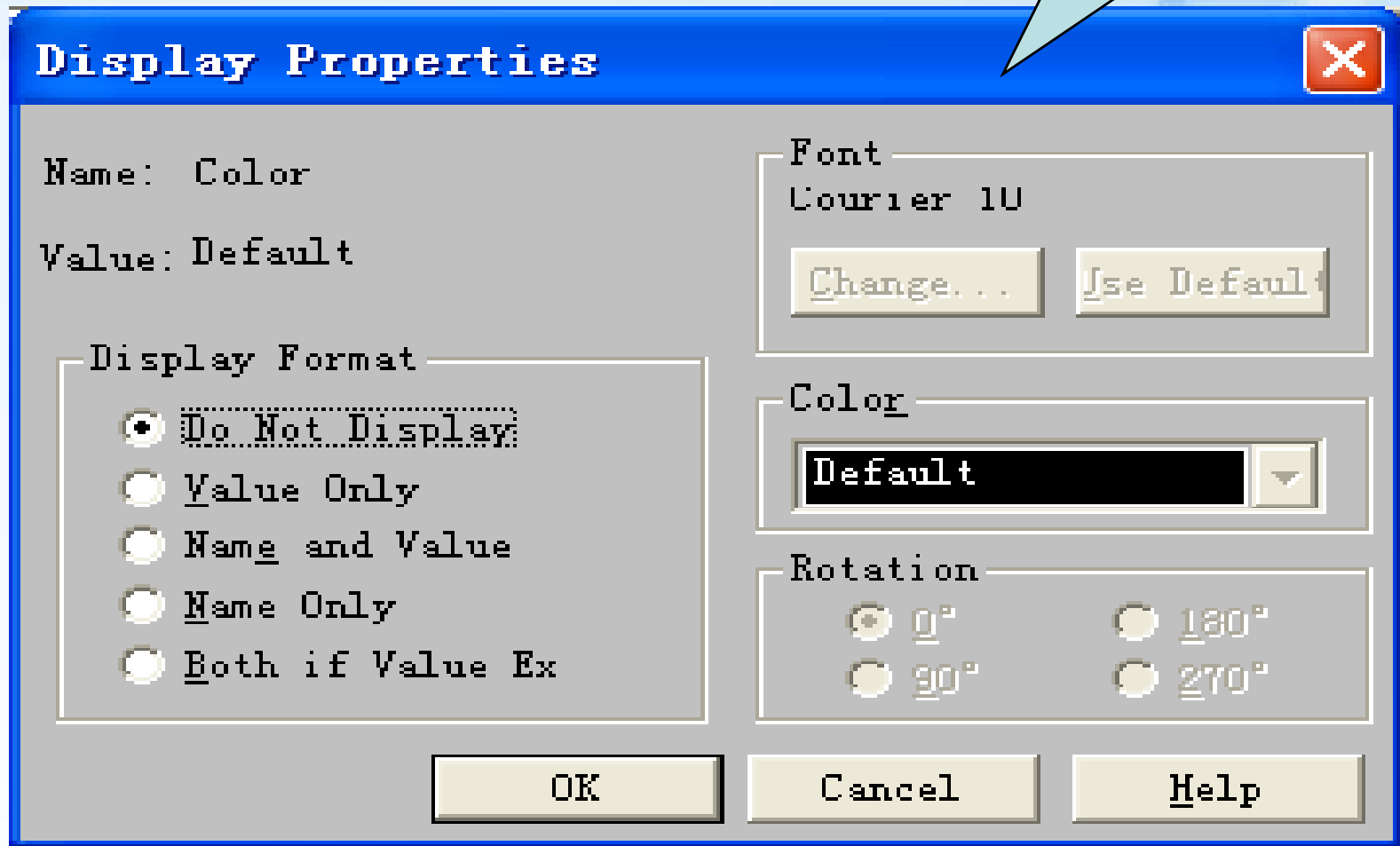
Name	Value	Attribute:
Color	Default	
Designator		R
Implementation Path		
Implementation Type	<none>	
Implementation Name		
Name	I00000	
Part Reference	R?	R V
PCB Footprint	PC05	

Color: Default

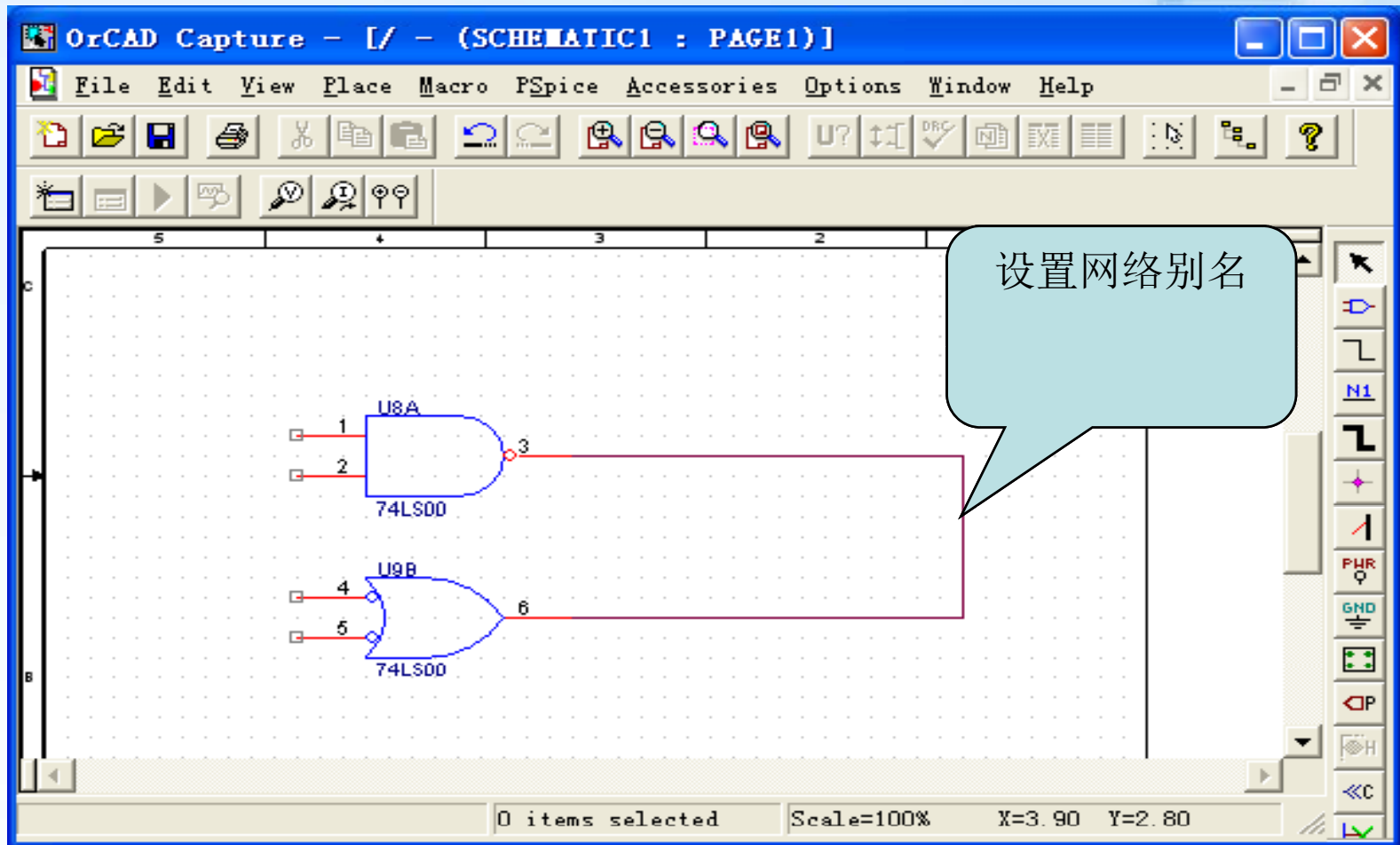
Buttons: OK, Cancel, New..., Remove, Display..., Help

5.5 元件显示属性

显示控制



5.6 网络别名



网络别名窗体

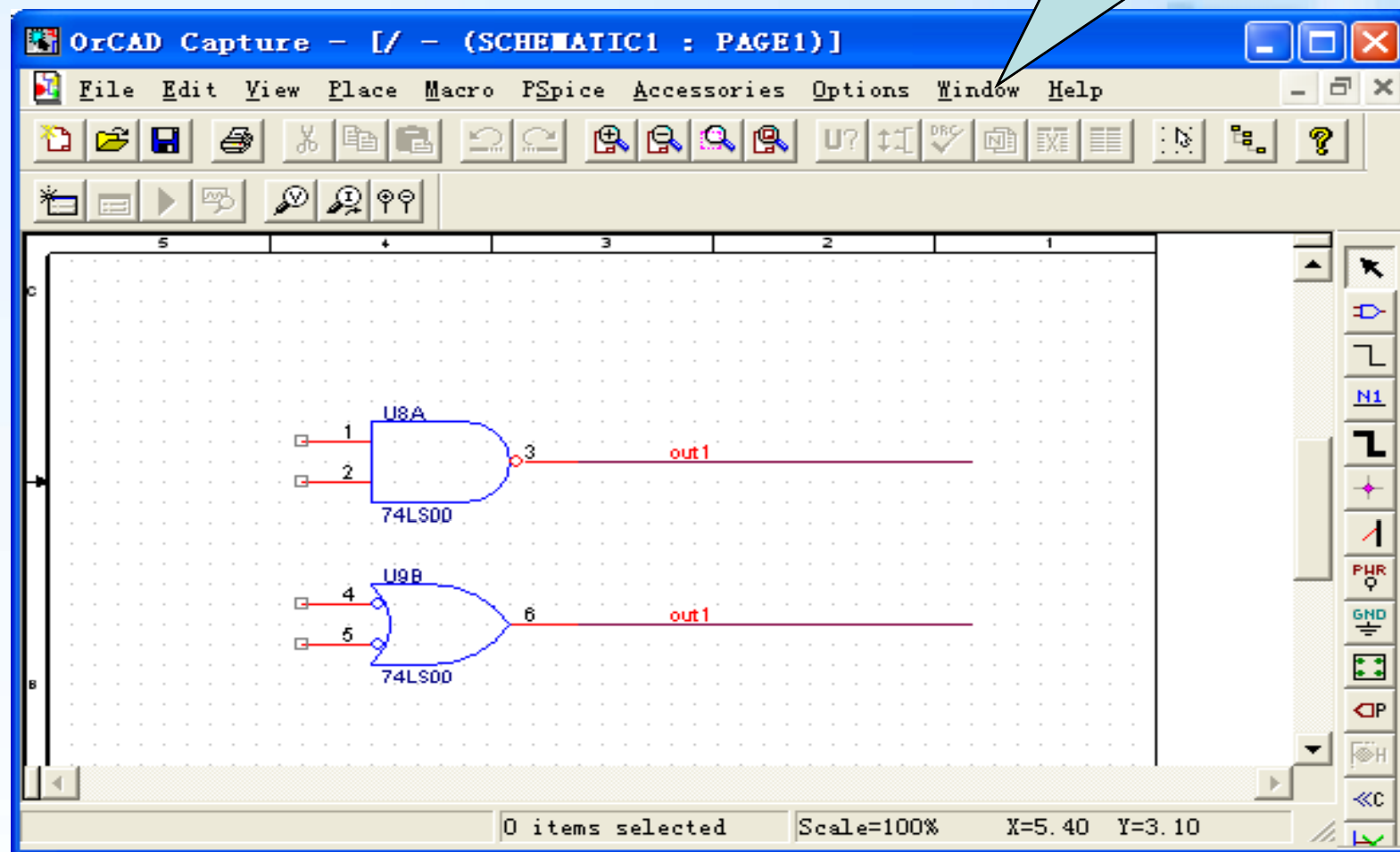
Place Net Alias ✕

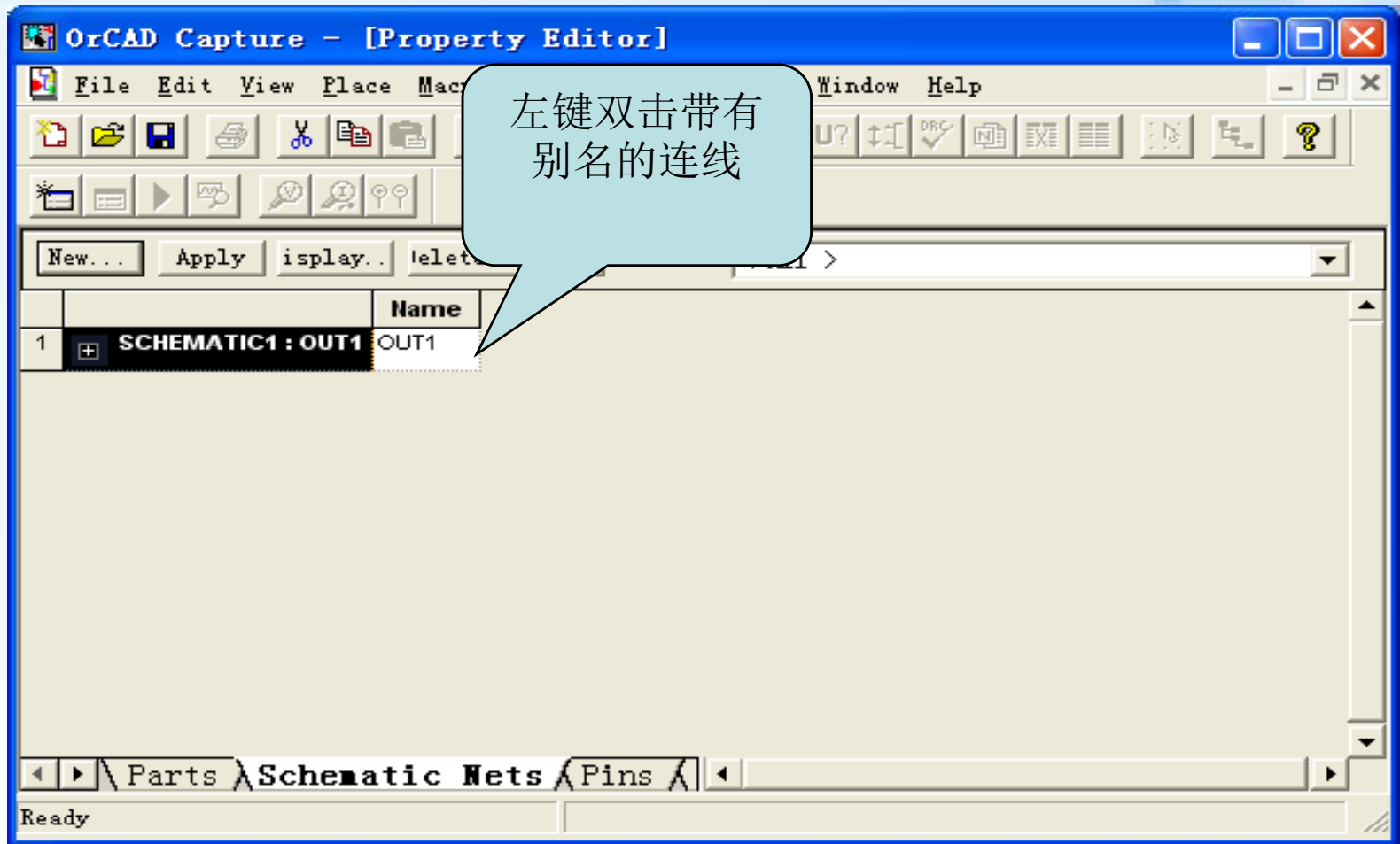
Alias:

Rotation: 0° 90° 180° 270°

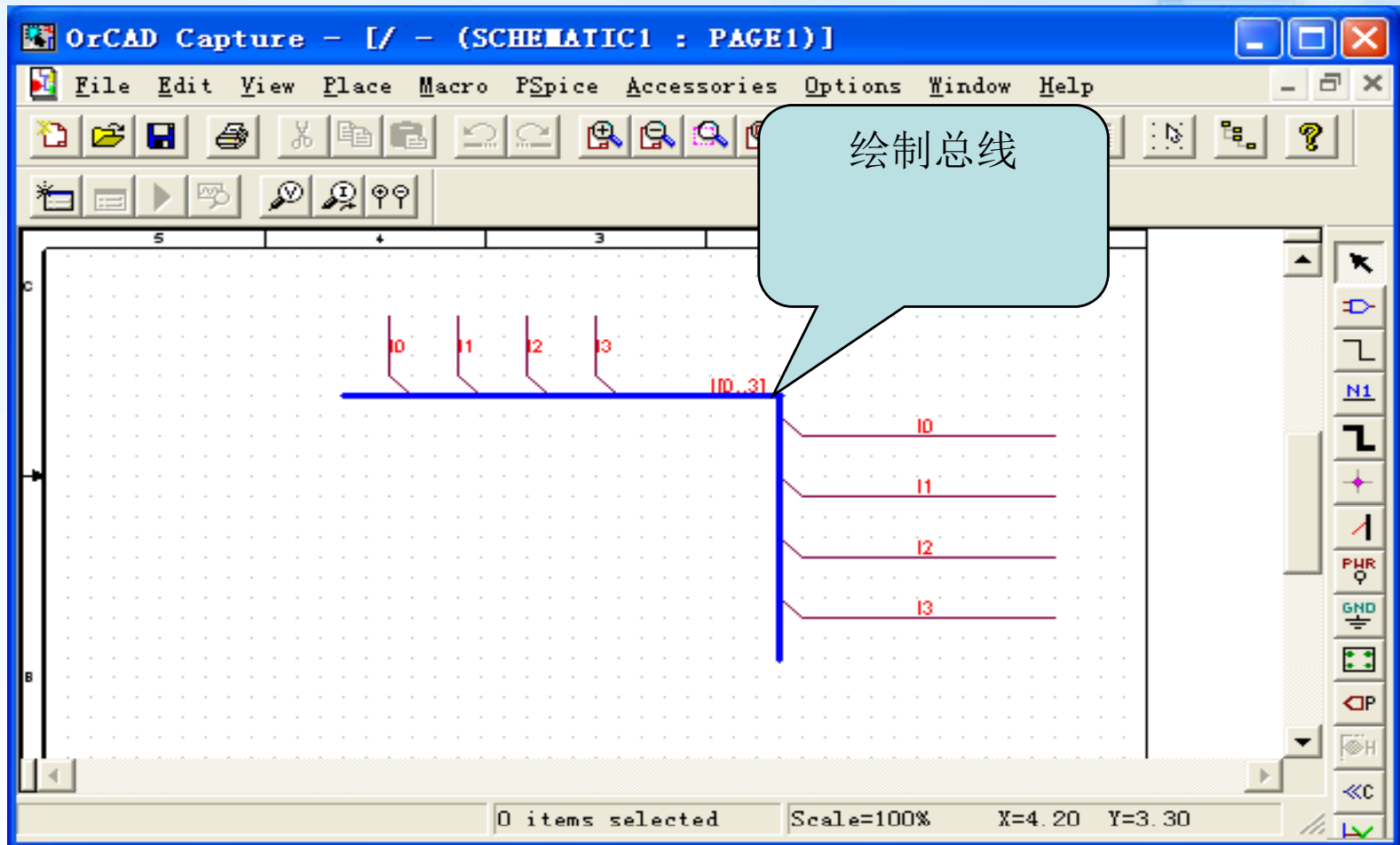
Font: Arial 7 (default)

添加网络别名

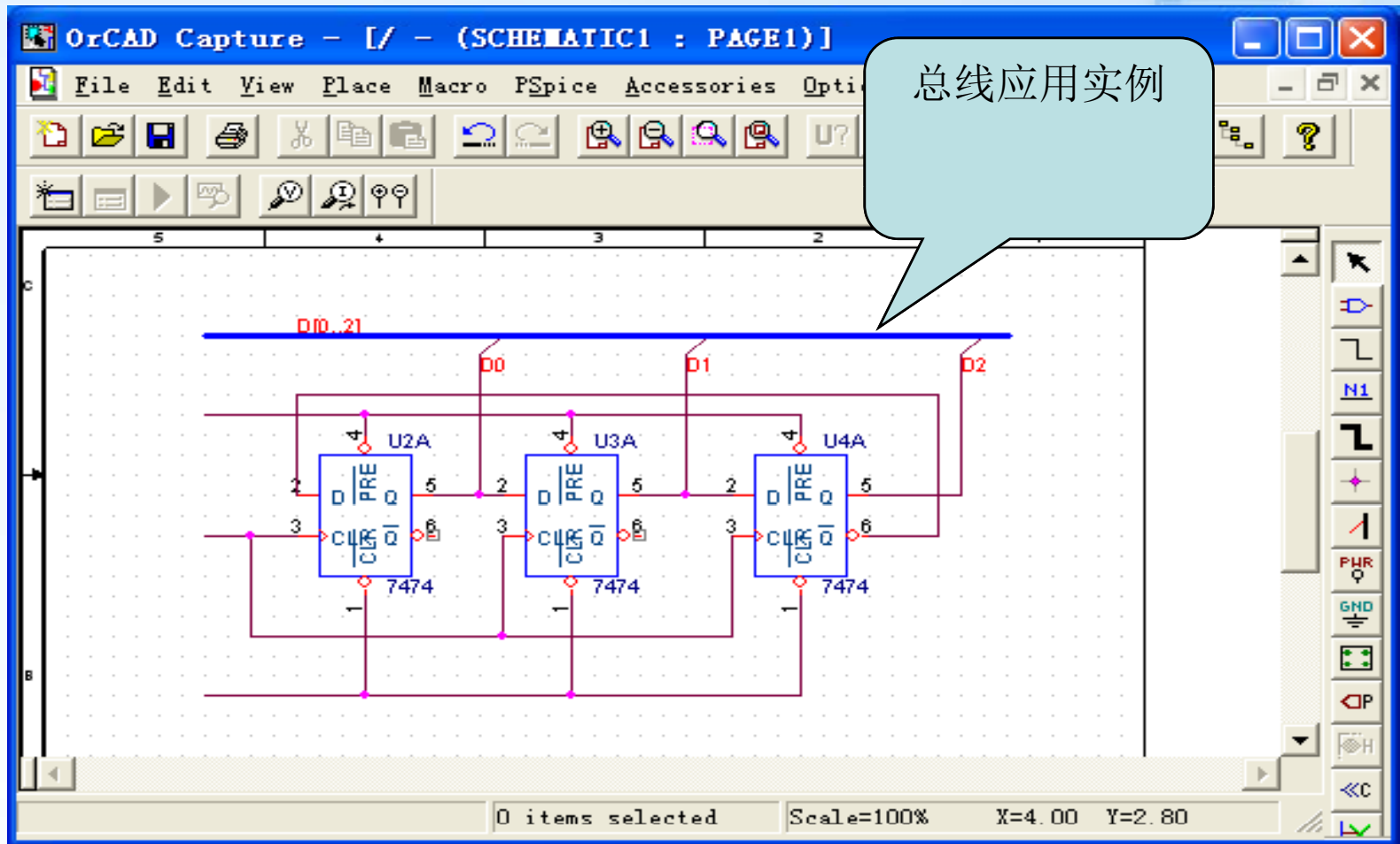




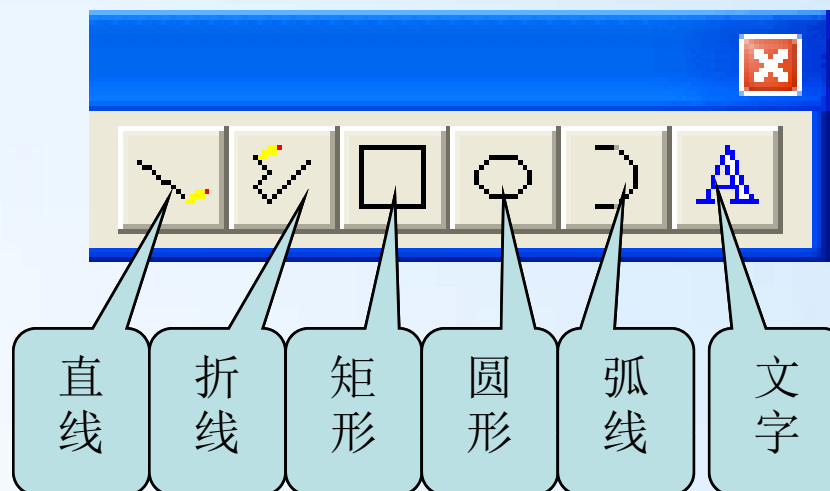
5.7 绘制总线BUS



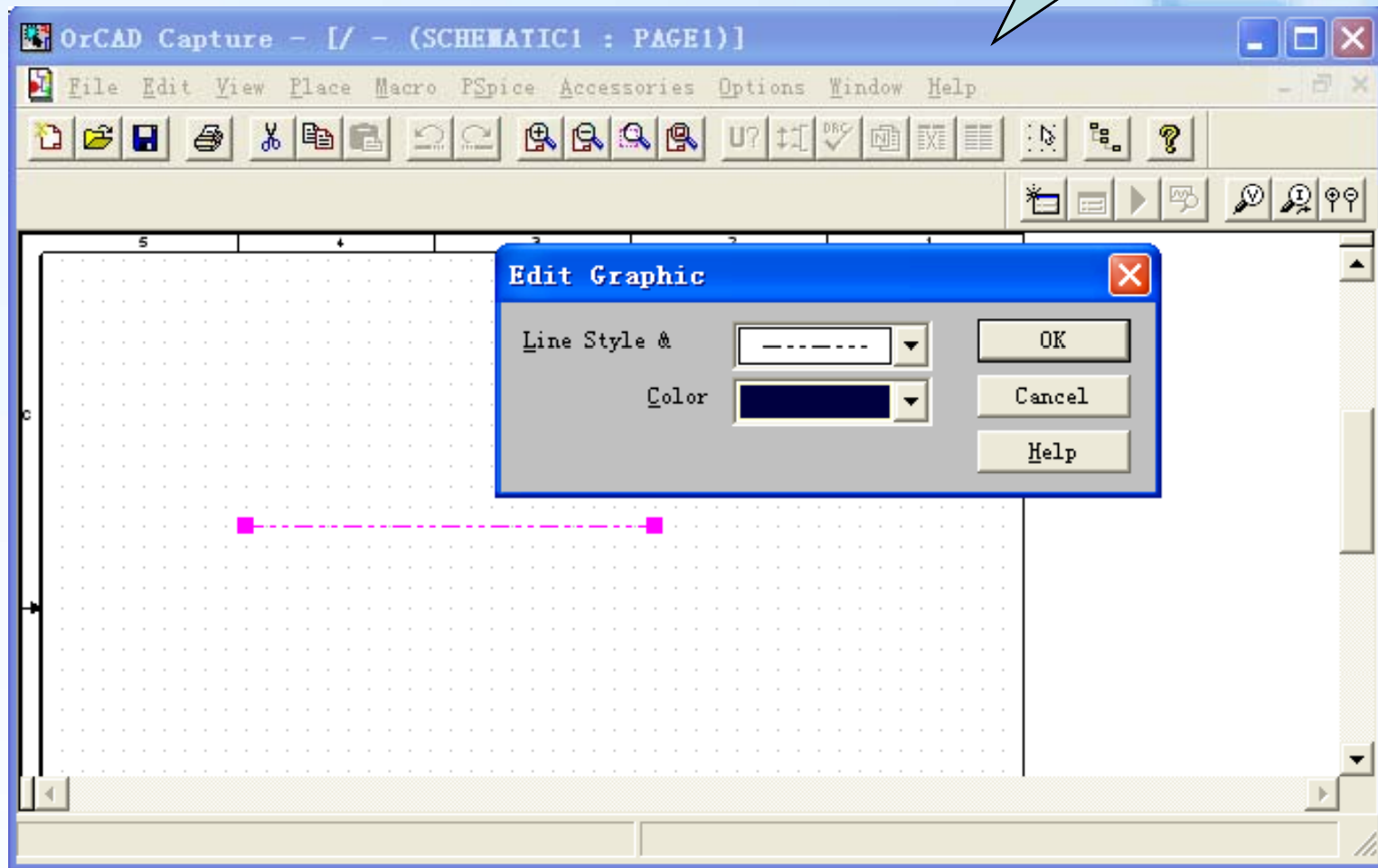
- 总线连接线（bus entry）不具有电气意义；
- 应用网络标号进行导线连接；



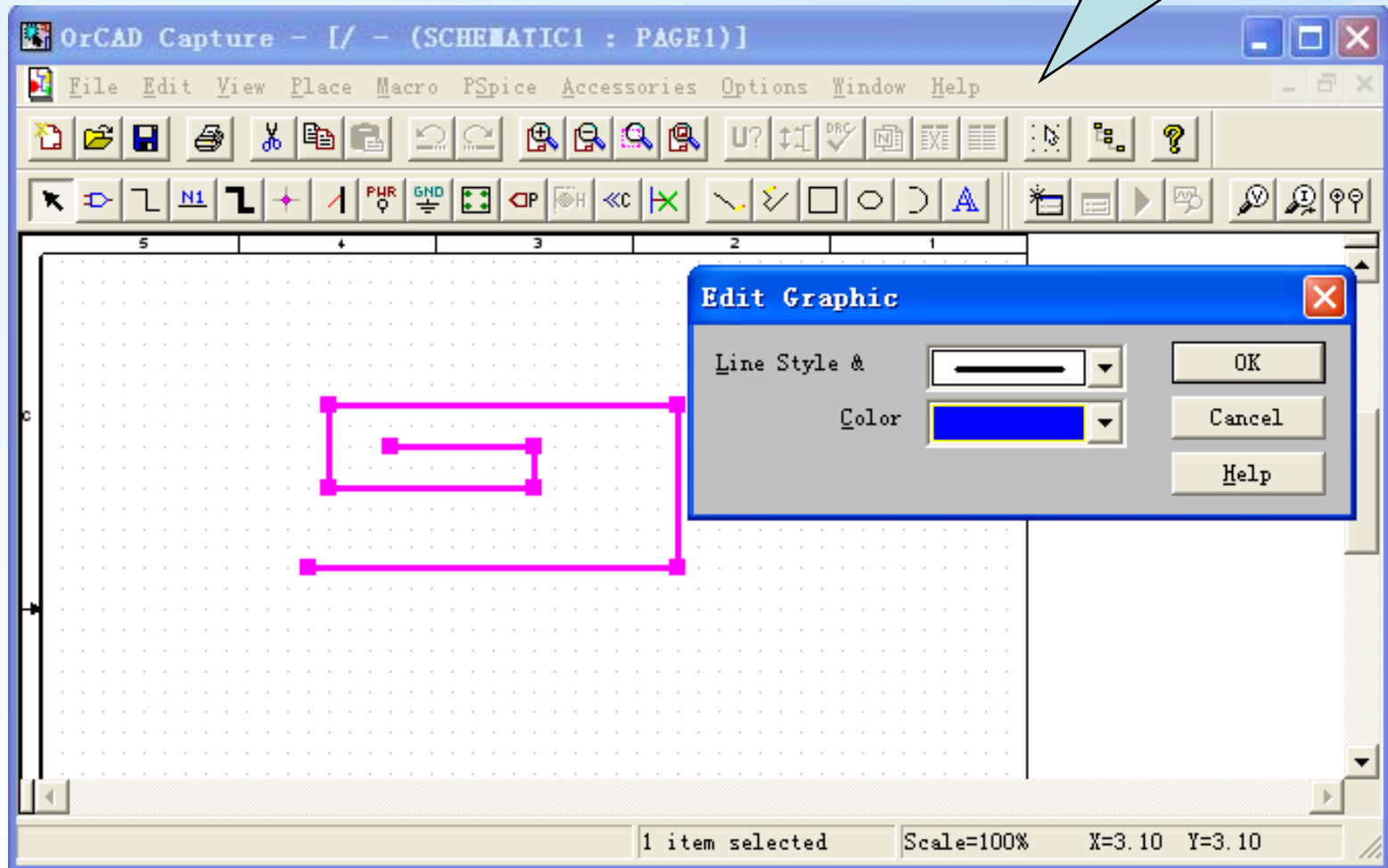
5.8 绘制图形



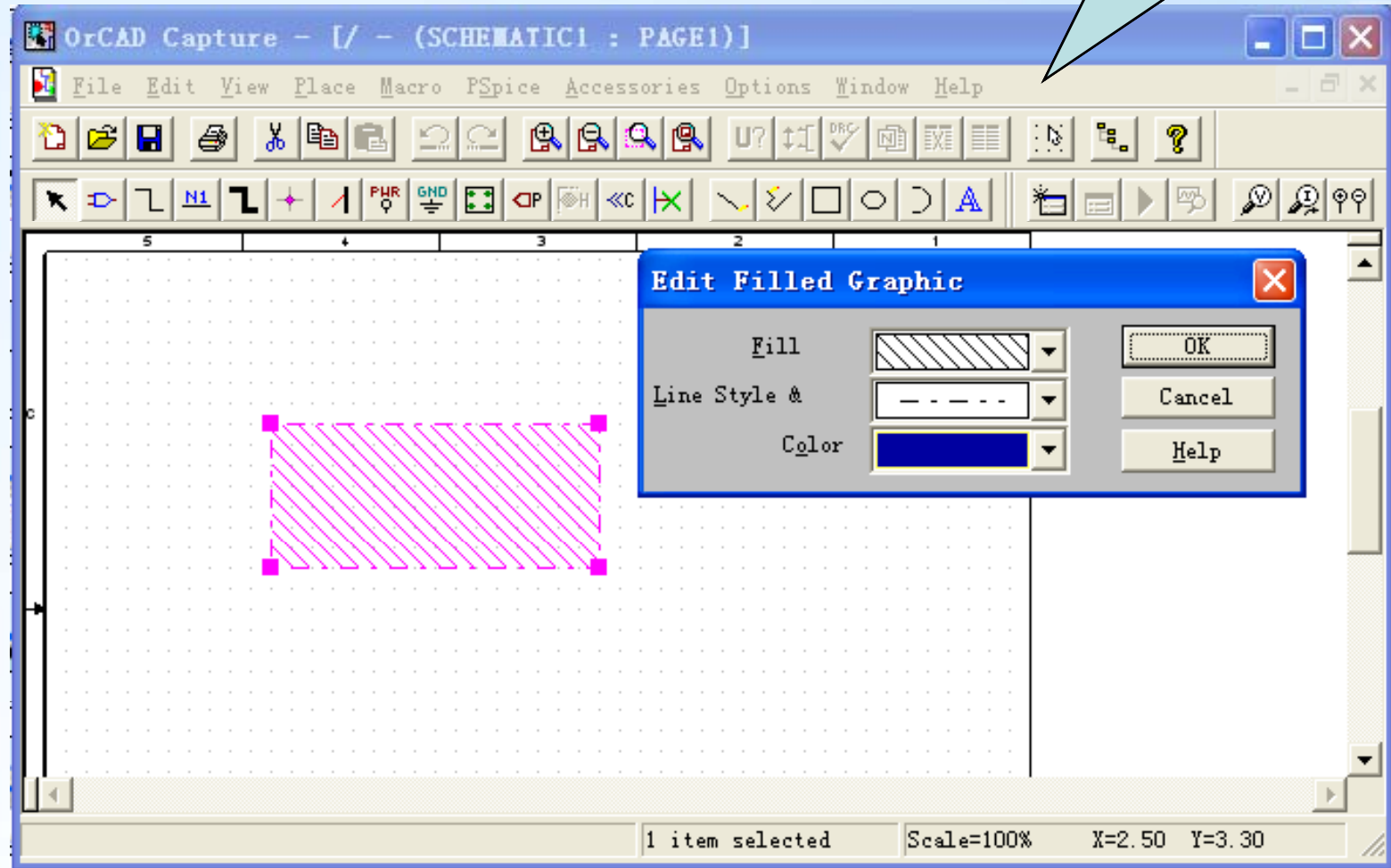
绘直线



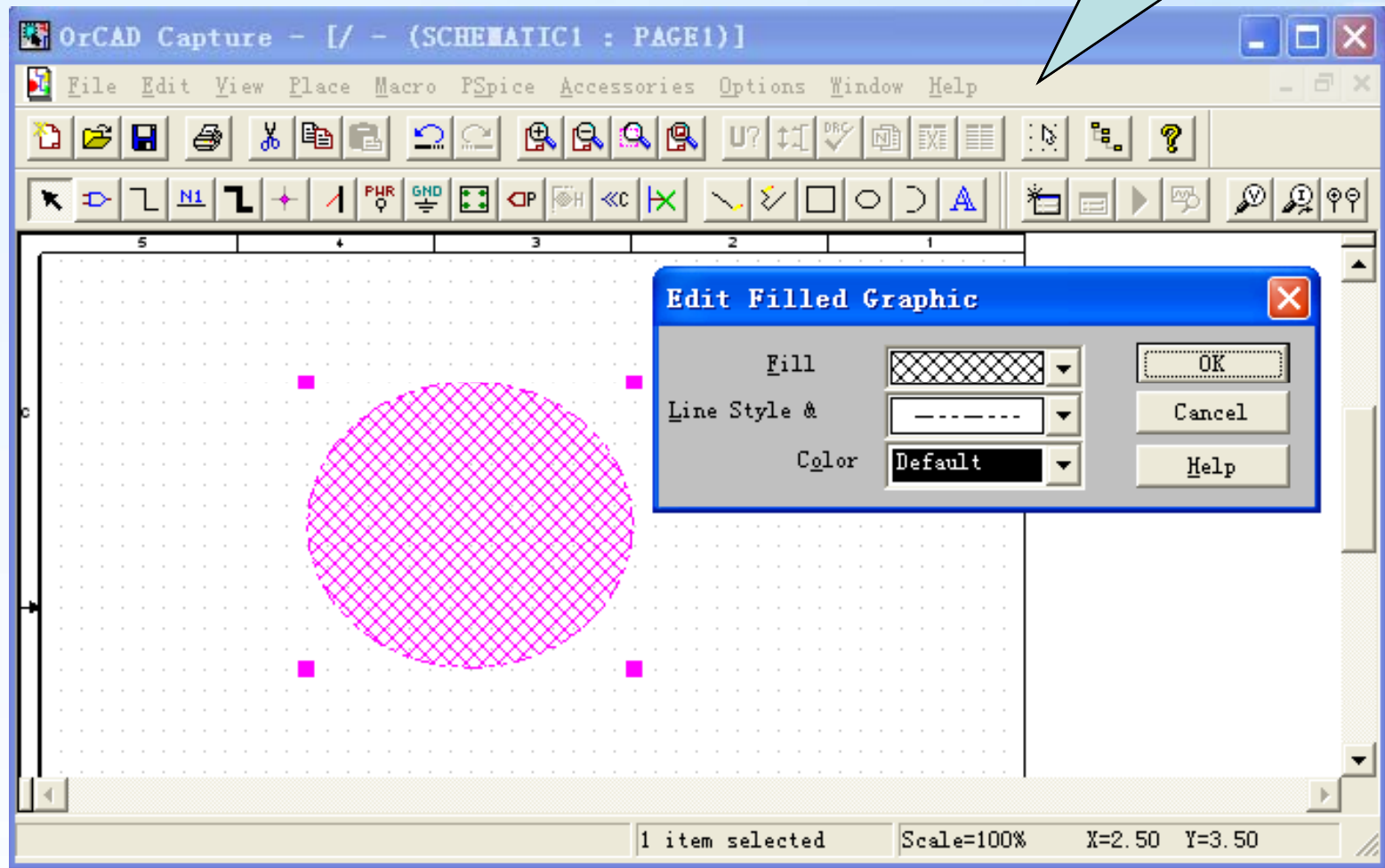
绘折线



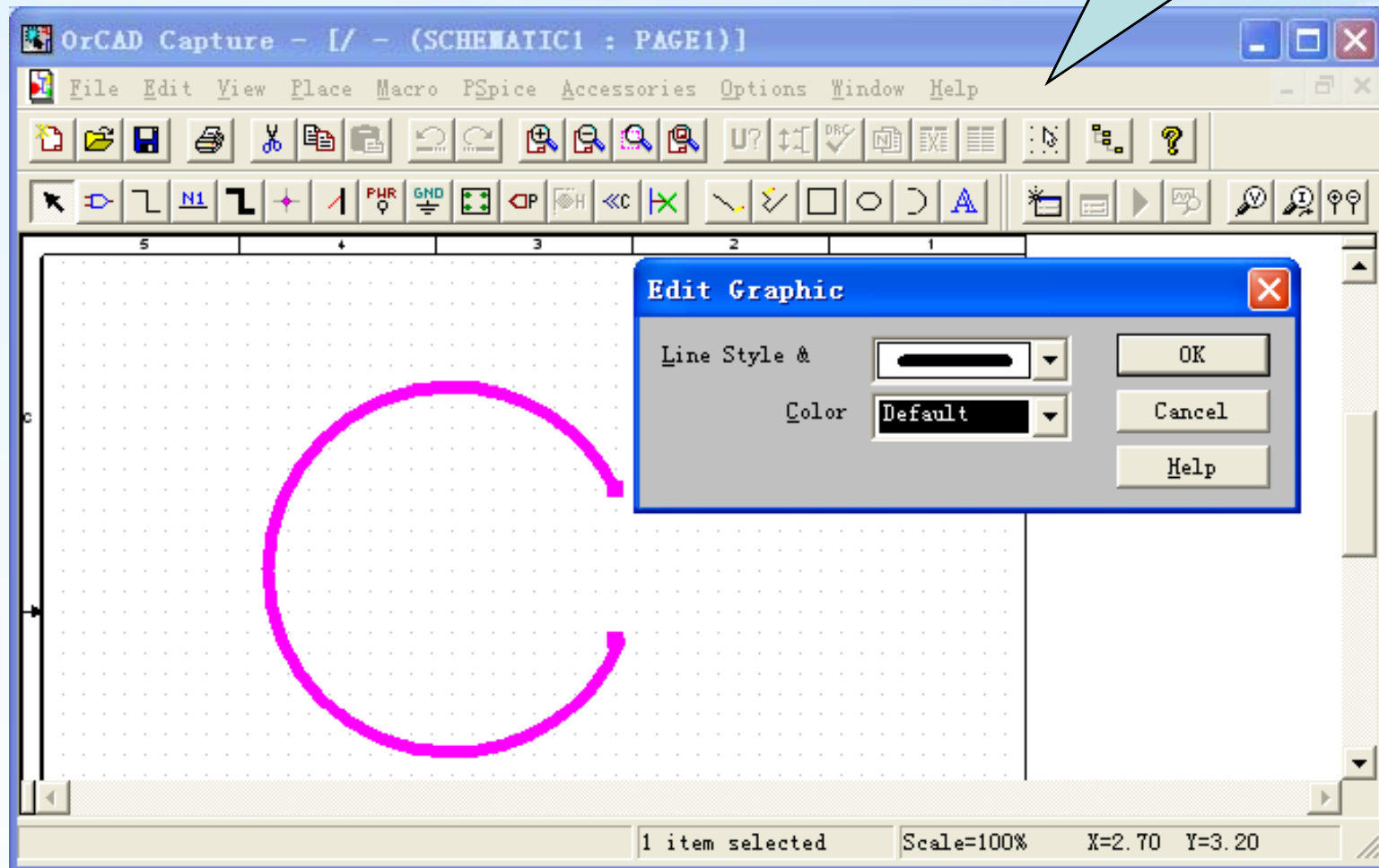
绘矩形



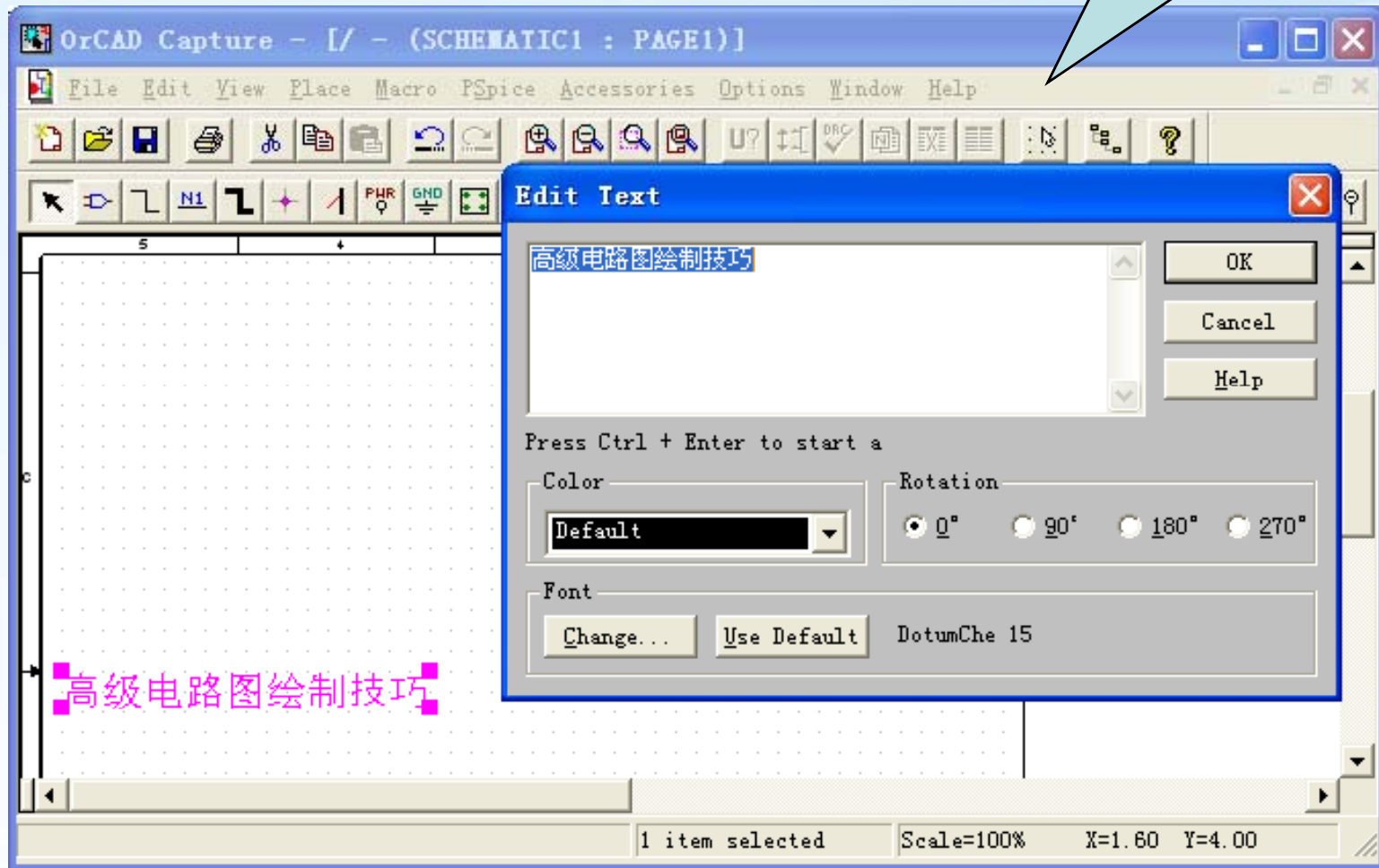
绘椭圆



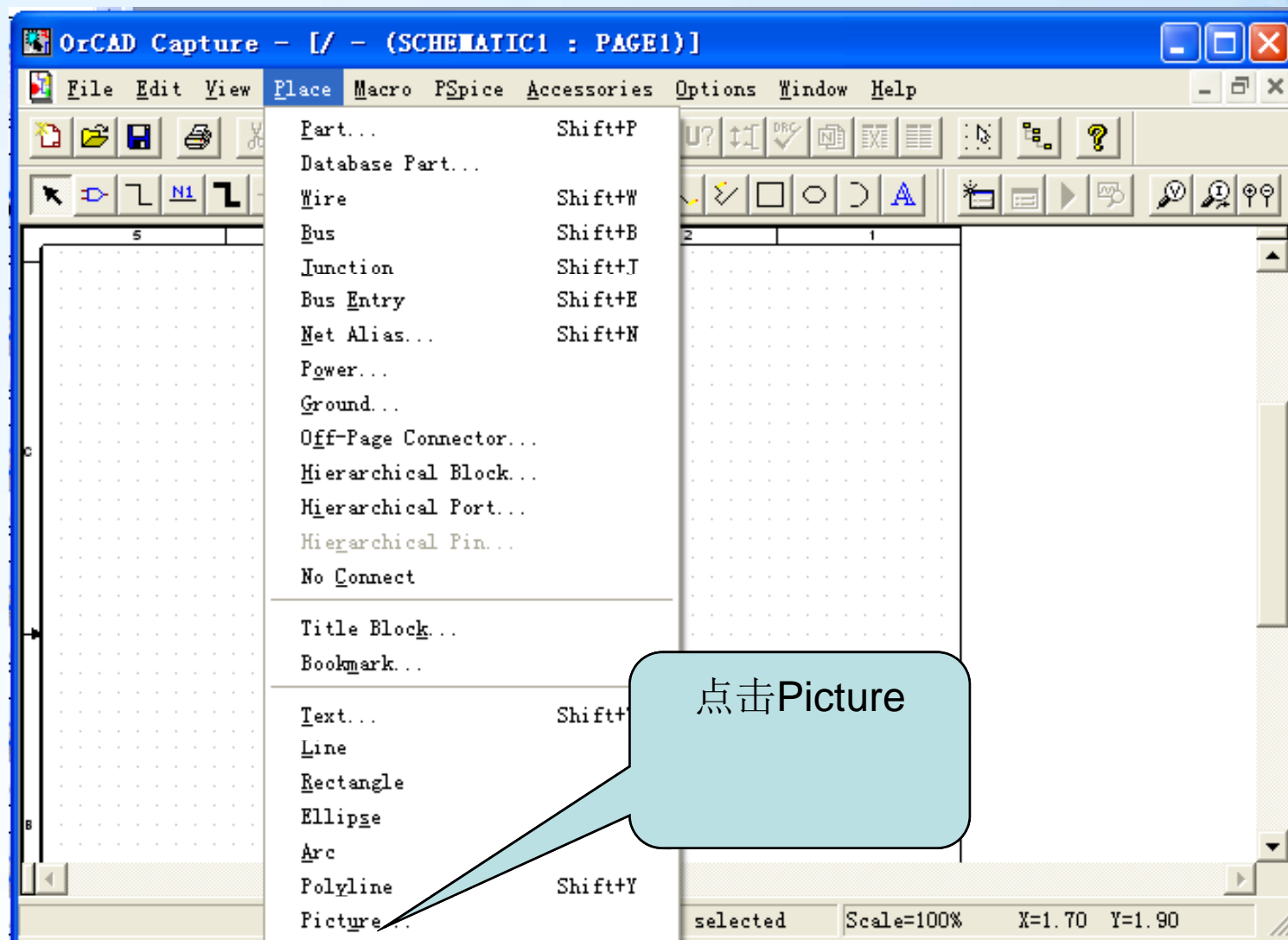
绘弧线



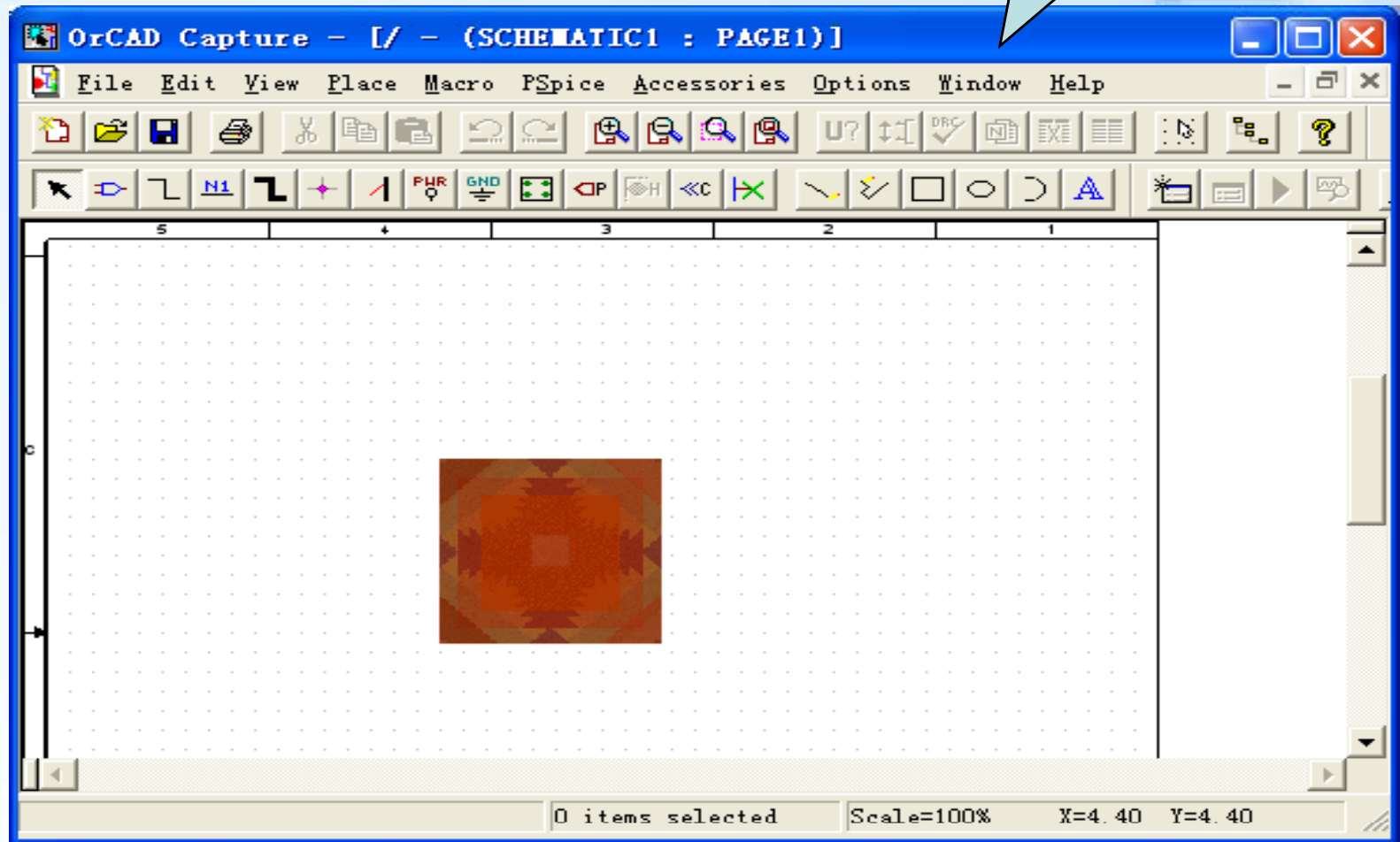
放置文字



高级电路图绘制技巧

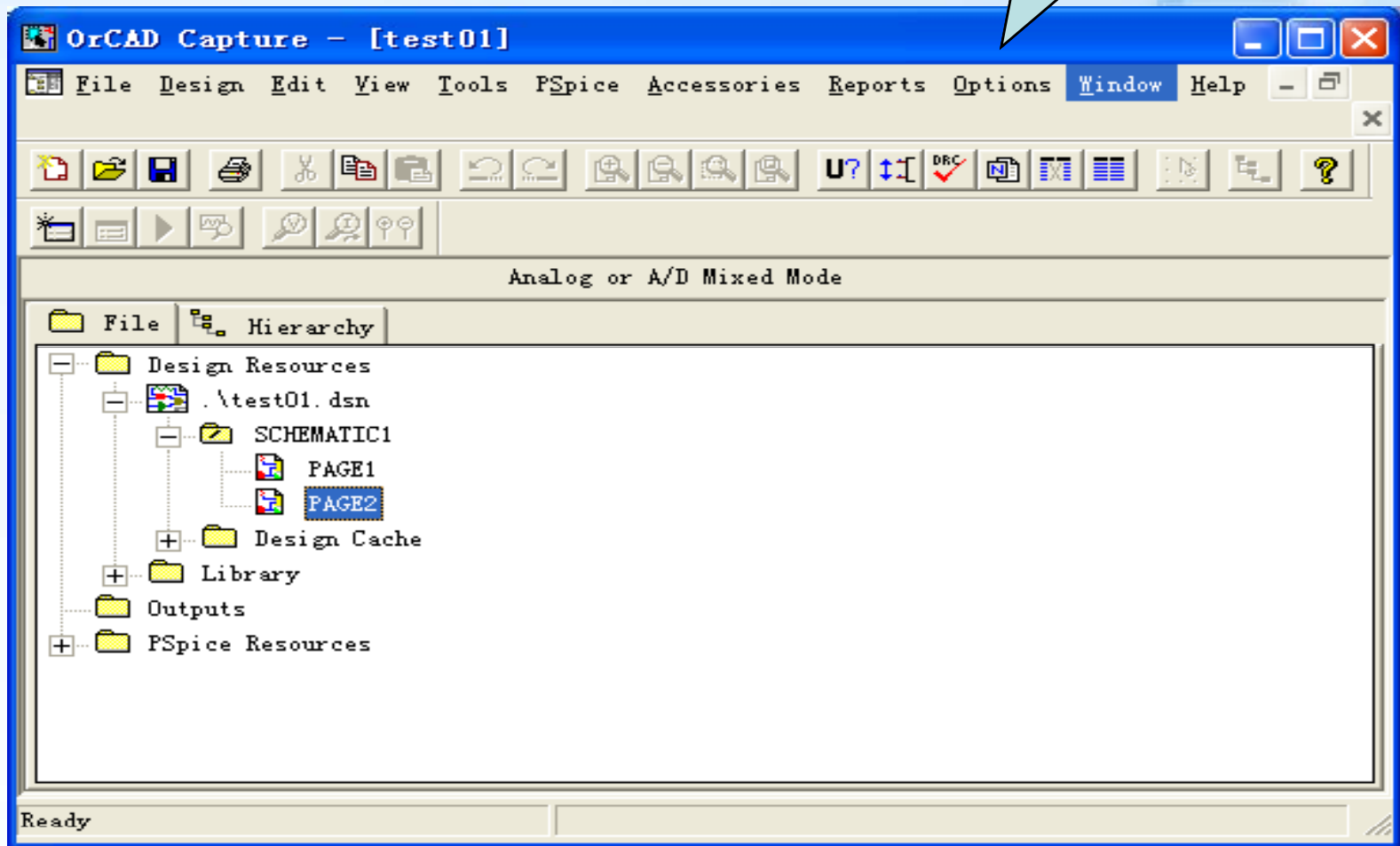


插入图片

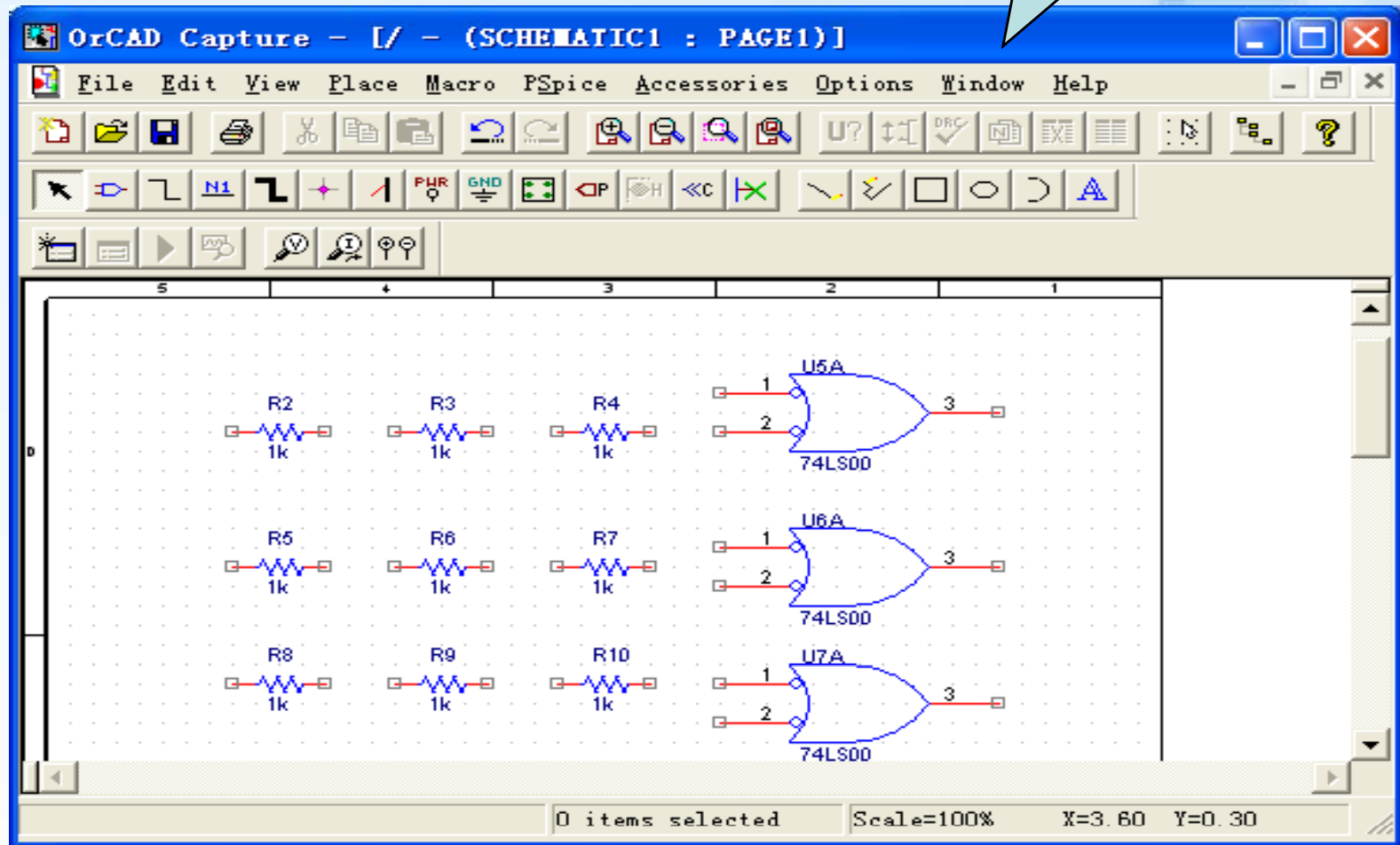


5.9 元件自动编号

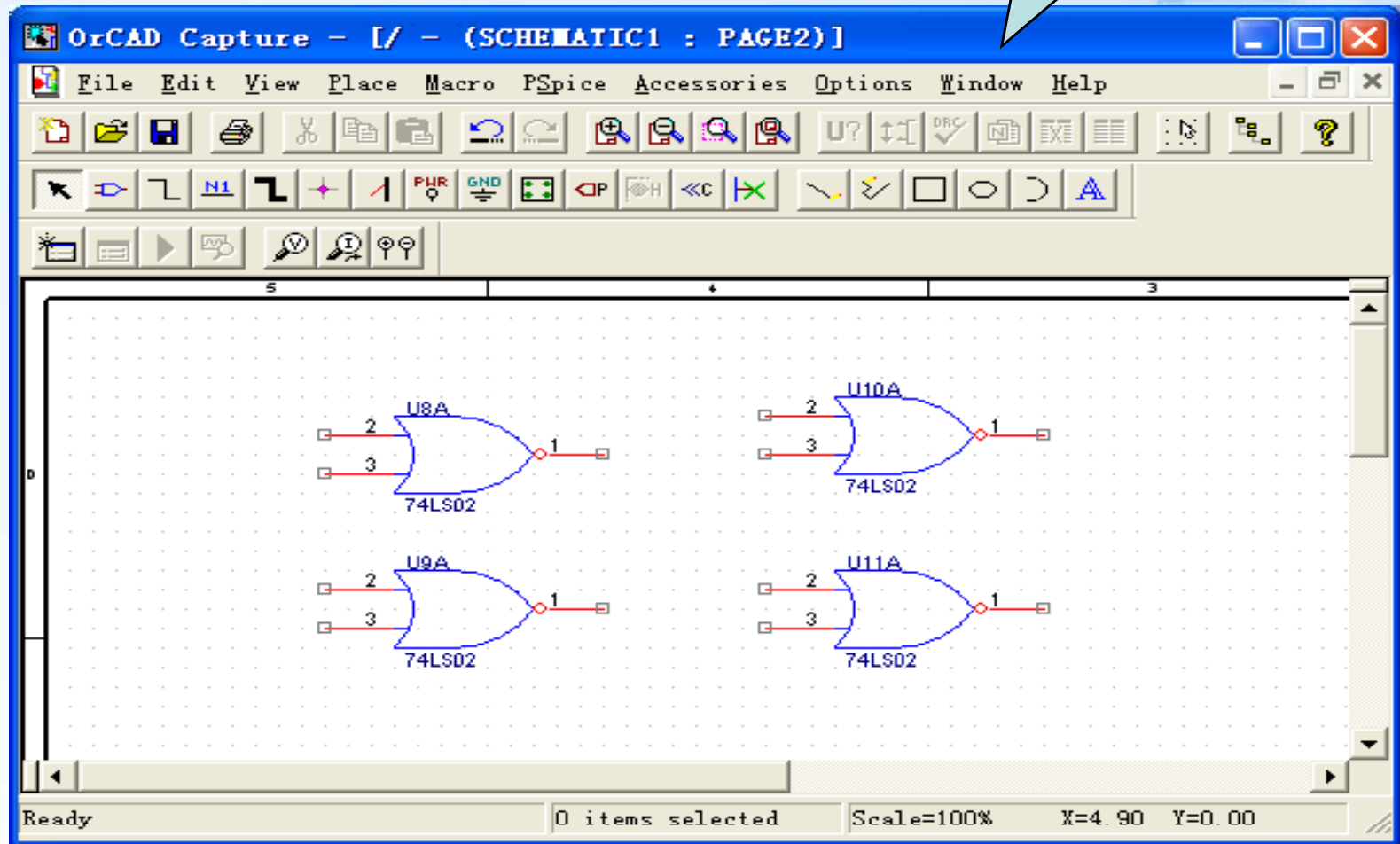
某设计中包含
两张图纸

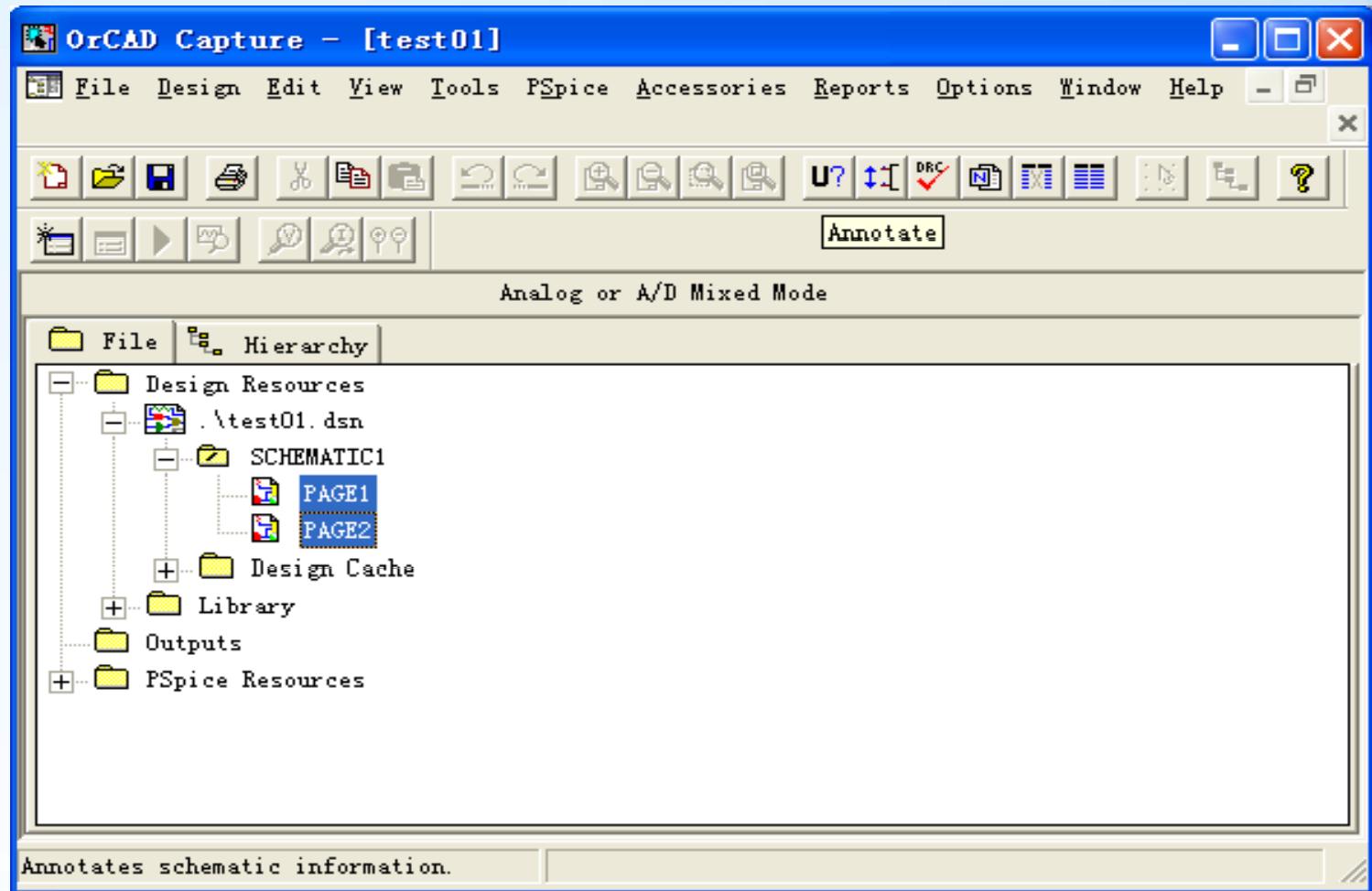


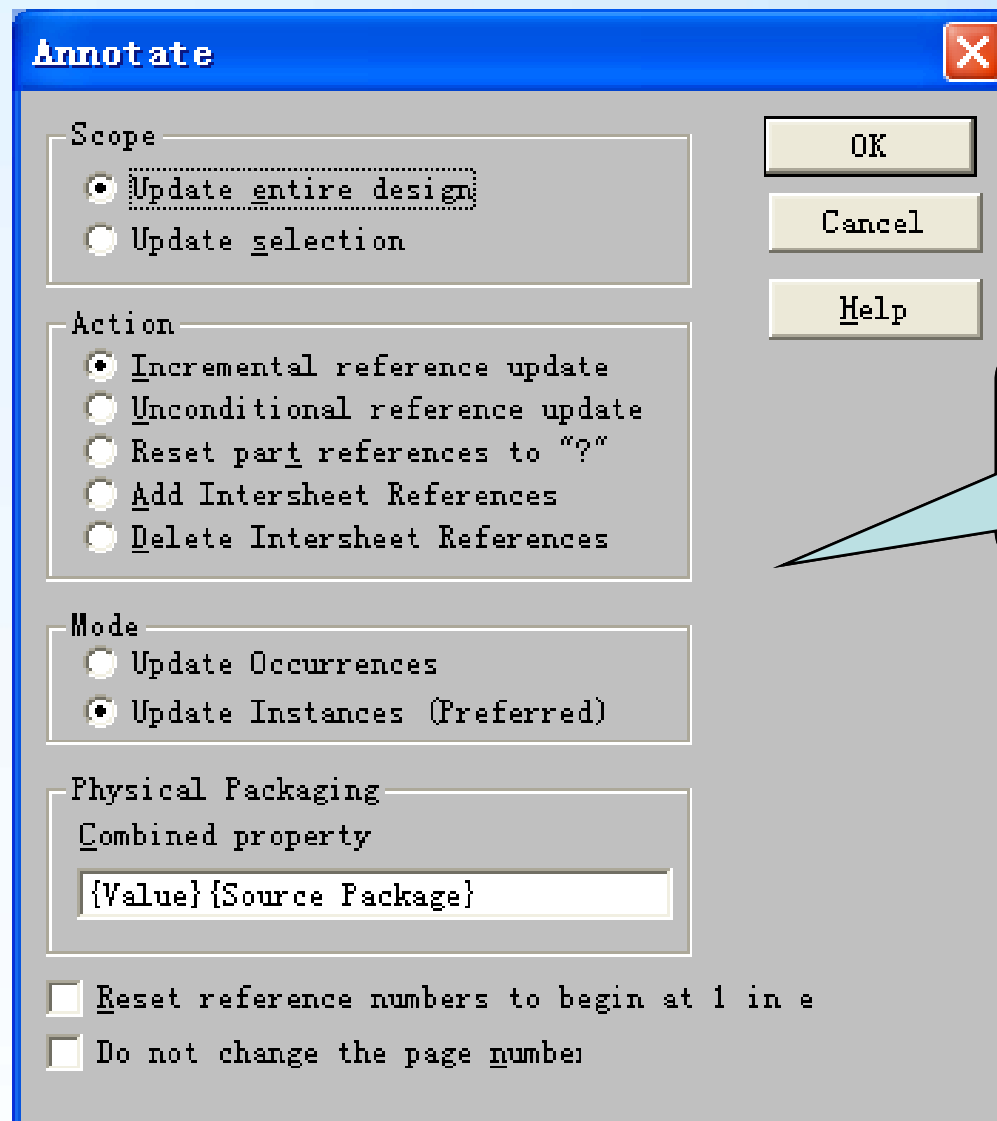
PAGE1(OLD)



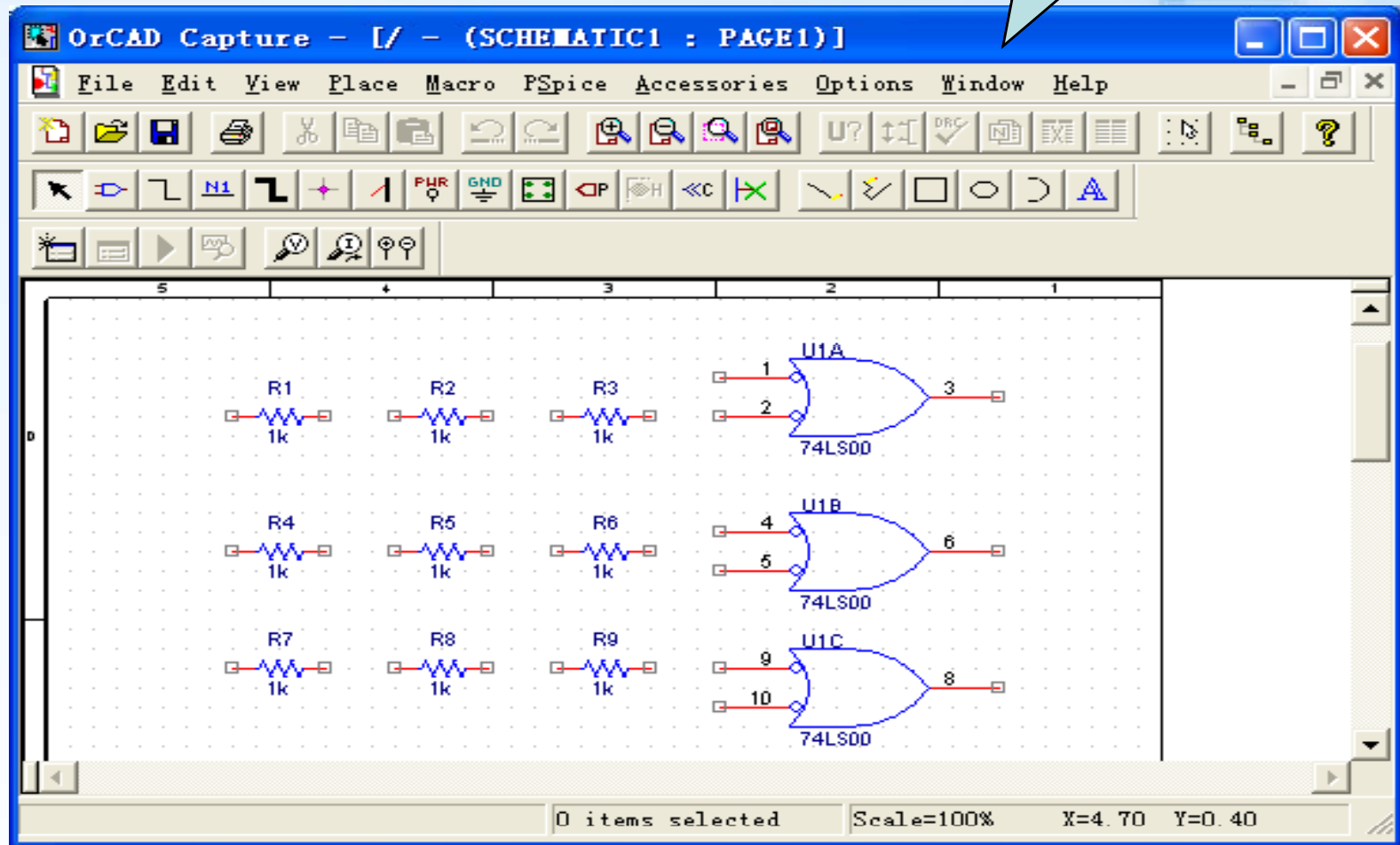
PAGE2(OLD)







PAGE1(NEW)



PAGE2(NEW)

