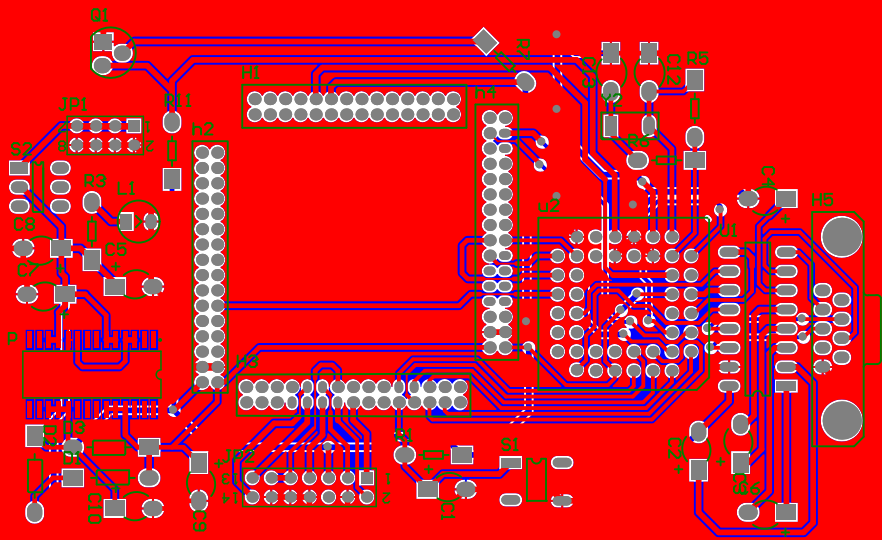


Title		
Size	Number	Revision
A0		
Date:	2011-7-1	Sheet of
File:	EA \CS416 SCHDOC	Drawn By:



Comment	Description	Designator	Footprint	LibRef	Quantity
CC2	电解电容	C1, C2, C3, C4, C5, C6, C7, C8, C9, C10	CC1+	CC2	10
CC1	电容	C12, C13	C2	CC1	2
DL4148	Default Diode	D1, D2	DZ1	Diode	2
DL5817	稳压二极管	D3	DZ1	DZ1	1
Header 14X2	Header, 14-Pin, Dual row	H1	H28*2 (小号)	Header 14X2	1
Header 15X2	Header, 15-Pin, Dual row	H3	H30*2 (小号)	Header 15X2	1
Header 16X2	Header, 16-Pin, Dual row	h2, h4	H32*2 (小号)	Header 16X2	2
D Connector 9	Receptacle Assembly, 9 Position, Right Angle	j10	DSUB1.385-2H9	D Connector 9	1
Header 4X2	Header, 4-Pin, Dual row	JP1	HDR2X4	Header 4X2	1
Header 7X2	Header, 7-Pin, Dual row	JP2	HDR2X7	Header 7X2	1
LED1	LED	L1	LED1	LED1	1
DIP28	芯片大	P	DW028	DIP28	1
NPN		Q1	NPN	NPN	1
RR1	电阻	R1, R3, R5, R6, R7, R11	RR1	RR1	6
SW	开关4	S1	DIP4L	DIP4	1
SW-SPST	Single-Pole, Single- Throw Switch	S2	DIP6L	SW-SPST	1
DIP44		u2	tl16c550c	DIP44	1
串口通信接口	+5V Powered, Multi- Channel RS-232 Driver/Receiver	U1	DIP16	MAX232ACPE	1
3.6864MHz	晶振	Y2	XLAT	XLAT	1