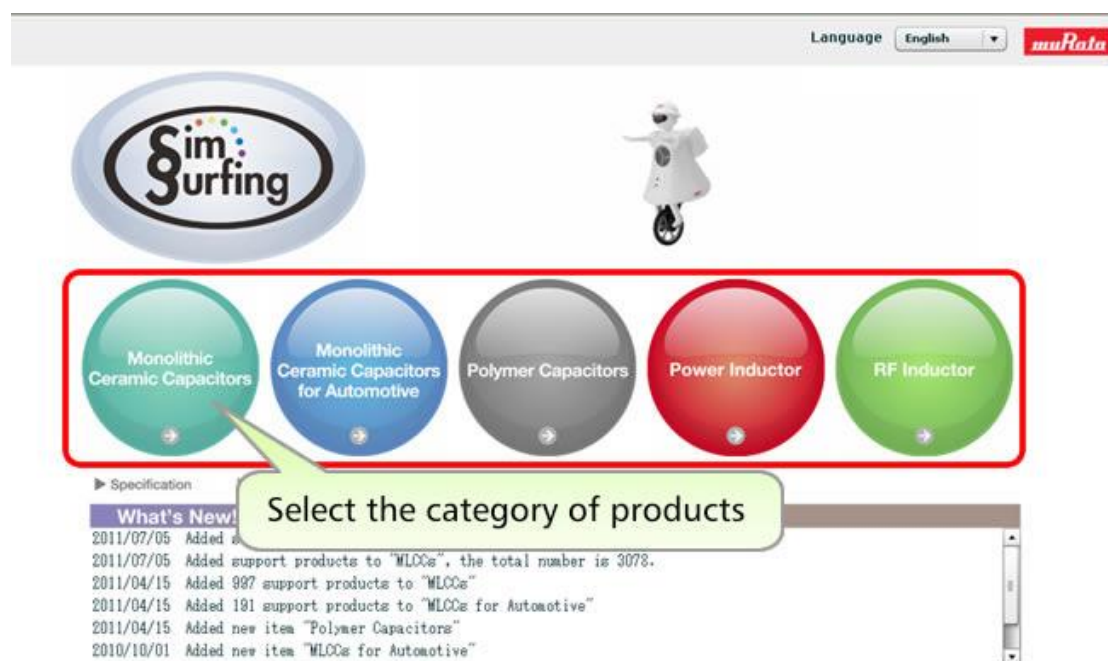


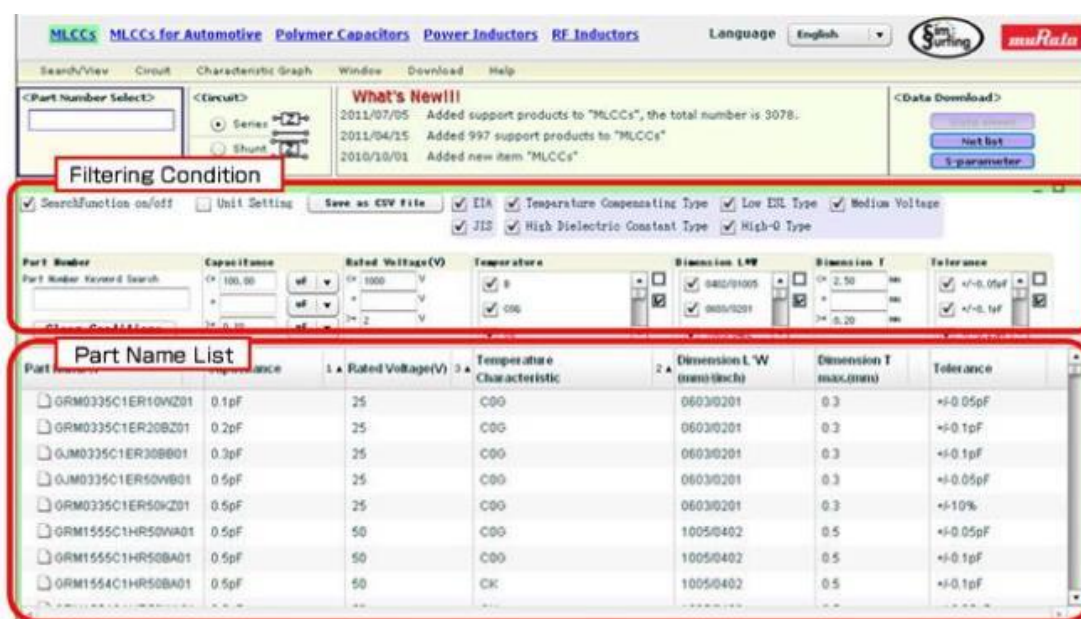
使用方法

(1) 产品目录选择

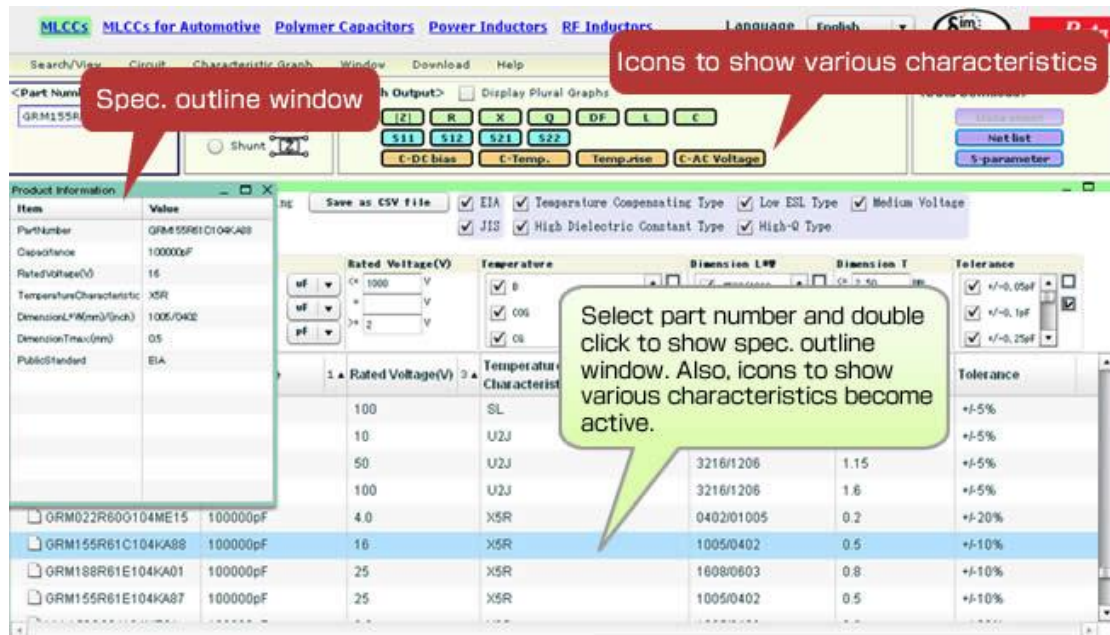


(2) 品名表在窗口的下半部分，筛选条件在上半部分。

*选择条件由产品目录决定

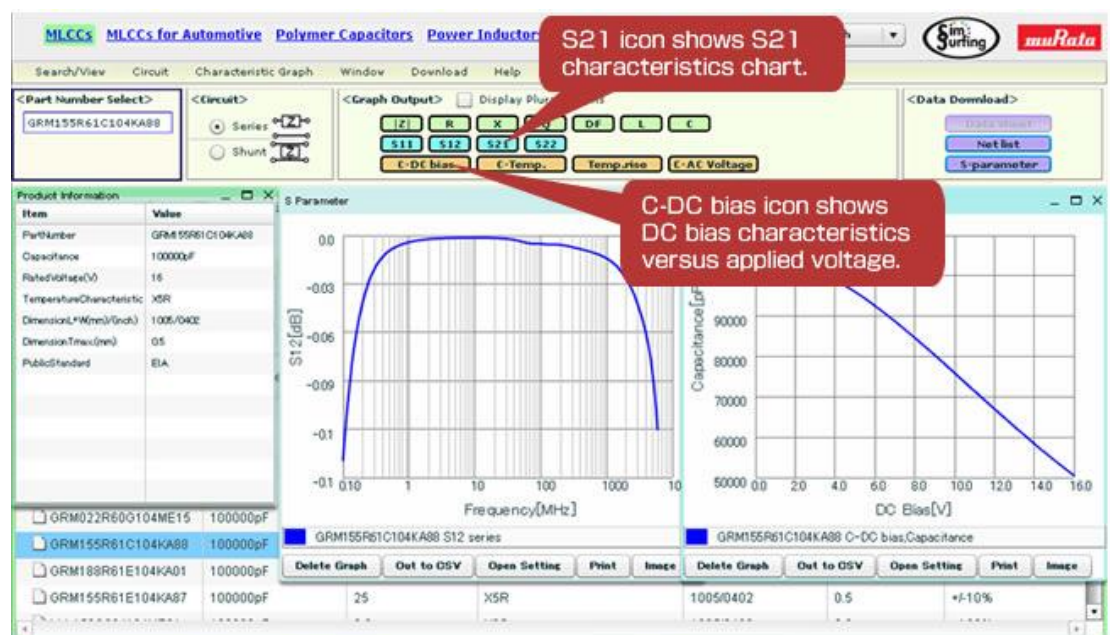


(3) 选定品名，多种图标可用



产品特性例子

(4) 点击品名图标，将显示该产品特性表



下载模拟数据

(5) 可下载模拟数据文件

The screenshot shows the Murata simulation software interface. The top navigation bar includes "MLCCs", "MLCCs for Automotive", "Polymer Capacitors", "Power Inductors", and "RF Inductors". The "Language" is set to "English". The "SimSurling" and "muRata" logos are visible in the top right corner.

The interface is divided into several sections:

- Part Number Select:** A search box containing "GRM155R61H102KA01".
- Circuit:** Radio buttons for "Series" and "Shunt" configurations.
- Graph Output:** Checkboxes for "Z1", "R", "X", "Q", "DF", "L", "E", "S11", "S22", "S21", "S12", "C-DC bias", and "C-Temp.". A "Display Plural Graphs" checkbox is also present.
- Data Download:** Buttons for "Data Download", "Net list", and "S-parameter".
- Search/View:** A dropdown menu.
- Window/Download/Help:** Standard menu options.
- SearchFunction on/off:** A checkbox.
- Unit Setting:** A checkbox.
- Save as CSV file:** A checkbox.
- EIA:** Checkboxes for "EIA", "Temperature", "JIS", and "High Dielect".
- Part Number:** A search box with "Part Number Keyword Search" and a "Clear Conditions" button.
- Capacitance:** Input fields for "100.00 uF" and "0.10 pF".
- Rated Voltage(V):** Input fields for "1000 V" and "2 V".
- Temperature:** Checkboxes for "R", "X5R", "X7R", and "X7R".
- Tolerance:** Checkboxes for "±0.25%", "±0.1%", and "±0.25%".

The main table displays the following data:

Part Number	Capacitance	Rated Voltage(V)	Temperature Characteristic	Dimension L *W (mm)(inch)	Dimension T max.(mm)	Tolerance
<input type="checkbox"/> GRM155R11H102KA01	1000pF	50	R	1005/0402	0.5	±-10%
<input type="checkbox"/> GRM15XR11H102KA86	1000pF	50	R	1005/0402	0.25	±-10%
<input type="checkbox"/> GRM188R11H102KA01	1000pF	50	R	1608/0603	0.8	±-10%
<input type="checkbox"/> GRM188R11H102MA01	1000pF	50	R	1608/0603	0.8	±-20%
<input type="checkbox"/> ORM022R61A102KE19	1000pF	10	X5R	0402/01005	0.2	±-10%
<input type="checkbox"/> GRM155R61H102KA01	1000pF	50	X5R	1005/0402	0.5	±-10%
<input type="checkbox"/> GRM188R61H102KA01	1000pF	50	X5R	1608/0603	0.8	±-10%
<input type="checkbox"/> GRM033R71E102KA01	1000pF	25	X7R	0603/0201	0.3	±-10%
<input type="checkbox"/> GRM155R71H102KA01	1000pF	50	X7R	1005/0402	0.5	±-10%
<input type="checkbox"/> GRM15XR71H102KA86	1000pF	50	X7R	1005/0402	0.25	±-10%

A red callout box with a white border contains the following text:

Netlist :
SPICE Netlist can be downloaded.
S parameter :
S-parameter can be downloaded.

品名列表将根据筛选设置更改

(6) 品名列表将根据筛选设置更改

The screenshot shows the Murata MLCCs website interface. At the top, there are navigation links for MLCCs, MLCCs for Automotive, Polymer Capacitors, Power Inductors, and RF Inductors. The language is set to English. The main content area is titled "Part Number Select" and shows a search for "GRM155R61C104KA98". Below this, there are options for "Series" and "Shunt". The "Graph Output" section includes buttons for "Z", "R", "X", "Q", "DF", "S11", "S12", "S21", "S22", "C-DC bias", "C-Temp.", "Temp.", and "C-AC Voltage". A red callout bubble points to the "C-Temp." button, stating "Filtering by classification".

The main table displays a list of part numbers with columns for "Part Number", "Capacitance", "Rated Voltage(V)", "Temperature", "Dimension L*W (inch)", "Dimension T (max.(mm))", and "Tolerance". A red callout bubble points to the "Temperature" column, stating "Filtering by temperature characteristics". Another red callout bubble points to the "Dimension L*W" column, stating "Filtering by chip size". A yellow callout bubble points to the "Part Number" column, stating "Part number list will be instantly changed according to filtering setting." A yellow callout bubble points to the "Capacitance" column, stating "Sort is available".

Part Number	Capacitance	Rated Voltage(V)	Temperature	Dimension L*W (inch)	Dimension T (max.(mm))	Tolerance
GRM1554C1HR50WA01	0.5pF	50	CK	1005/0402	0.5	+/-0.05pF
GRM1554C1HR50BA01	0.5pF	50	CK	1005/0402	0.5	+/-0.05pF
GRM1554C1HR80BA01	0.6pF	50	CK	1005/0402	0.5	+/-0.1pF
GRM1554C1HR60SA01	0.8pF	50	CK	1005/0402	0.5	+/-0.05pF
GRM1554C1HR60WA01	0.8pF	50	CK	1005/0402	0.5	+/-0.1pF
GRM1554C1HR90WA01	0.9pF	50	CK	1005/0402	0.5	+/-0.05pF
GRM1554C1HR90YA01	0.9pF	50	CK	1005/0402	0.5	+/-0.05pF